

CORK LINE

LEVEL CROSSINGS PROJECT

Public Consultation

Preliminary Design Report
and EIA Screening &
Scoping Report

Information Leaflet

November 2019



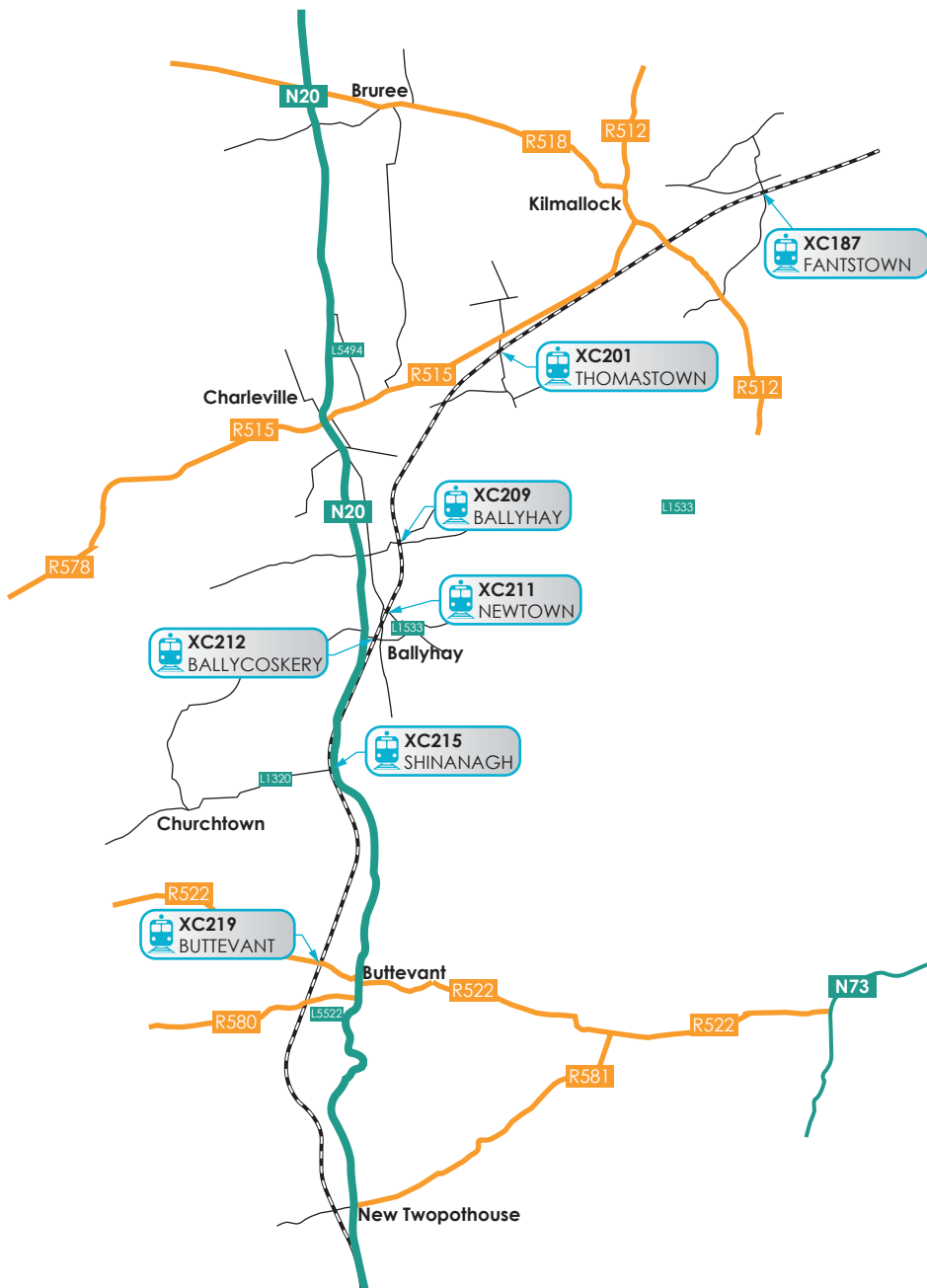
Iarnród Éireann
Infrastructure

Cork Line Level Crossings Project

Iarnród Éireann is undertaking the Cork Line Level Crossings Project to identify the best approach to removing seven level crossings located along the main Cork to Dublin line.

These level crossings are being removed/upgraded to provide a safer environment for those living near the rail line and a more efficient service for all Iarnród Éireann customers.

There are currently seven manned public road level crossings in operation on the Cork to Dublin line between Limerick Junction and Mallow stations in Counties Cork and Limerick. The crossings are located within a 24km section of the line between the Cork and Limerick county boundary as detailed in the map opposite.



Why is this project needed?

In June 2019 Iarnród Éireann participated in International Level Crossing Awareness Day (ILCAD) which aims to highlight the dangers of level crossings and to educate the public on acting safely at level crossings.

In the first six months of 2019, Iarnród Éireann reported 51 incidents at level crossings nationally, an increase of 82% on the same period in 2018. This figure includes cars and HGVs colliding with barriers and near-misses between vehicles and trains.

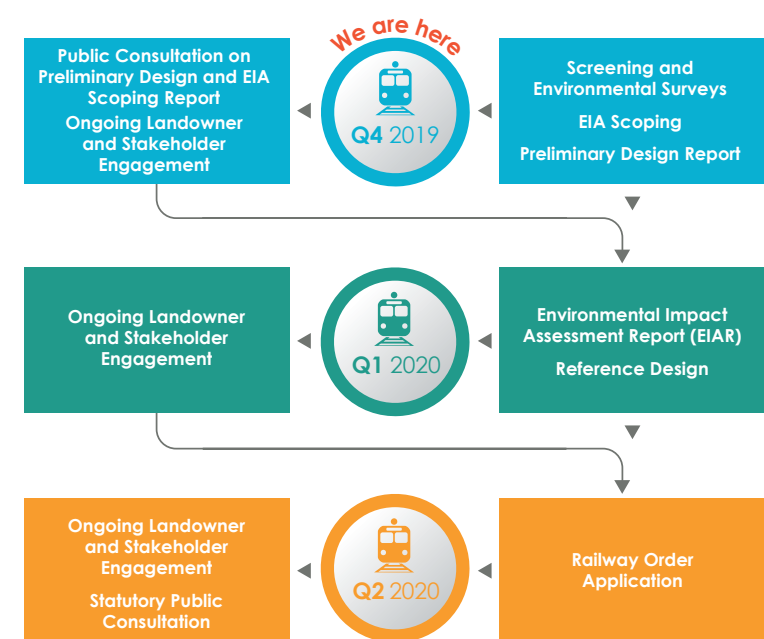
It is Iarnród Éireann's policy to close level crossings where possible and practicable. The removal of the level crossings in conjunction with providing alternative routes for vehicles, pedestrians and cyclists will remove the potential for accidents. The permitted line speed of trains at each of these seven level crossing locations varies between 140 – 160 kilometres per hour so this high speed creates an additional safety risk.

The Level Crossing Risk Model (LCRM) is used by Iarnród Éireann to assist in the management and identification of risks at level crossings which calculates risk based on factors such as the number of users of a rail service and several of the seven level crossings are identified as high-risk on this scale.

Public Consultation Roadmap

Stakeholders are being invited to contribute to the development of the Cork Line Level Crossings Project through public consultation and engagement at key stages, as outlined in the Cork Line Level Crossings Public Consultation Roadmap below.

CORK LINE LEVEL CROSSINGS ROADMAP



Public Consultation

Iarnród Éireann has published a Preliminary Design Report which shows the proposed solutions for each of the seven level crossings. We are seeking feedback on the Preliminary Design Report and Environmental Impact Assessment (EIA) Scoping Report and any other comments or observations on the Cork Line Level Crossings Project.

Public consultation will be undertaken for ten weeks from Tuesday 12 November 2019 until Tuesday 21 January during which time the Preliminary Design Report and EIA Screening & Scoping Report can be viewed and downloaded at www.irishrail.ie/CorkLineLevelCrossings.

Iarnród Éireann is inviting feedback on the following consultation questions:

1. Do you have any comments or additional information in relation to the Cork Line Level Crossings Project that you would like us to be aware of as the project progresses?
2. Do you have any comments on the proposed solutions for the seven level crossings as outlined through Chapters 4 to 10 of the Preliminary Design Report?
3. Appendix D of the Preliminary Design Report includes the Route Options Report. Do you have any comments on the Route Options Report?
4. Do you have any comments on the Environmental Impact Assessment Screening and Scoping Report?
5. How would you like Iarnród Éireann to communicate with you as the project develops?

Information Events

Public consultation events will take place at the following venues where you can meet with the Cork Line Level Crossings Project team to discuss the project and have any questions you may have answered.

Date	Venue	Time
Tuesday 19 November 2019	Charleville Park Hotel, Charleville, Co. Cork	2.00pm to 8.00pm
Wednesday 20 November 2019	Deebert House Hotel, Deebert, Kilmallock, Co. Limerick	2.00pm to 8.00pm

How to make a submission

If you would like to make a submission, please send it by email or post by **Tuesday 21 January**:

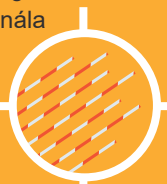
Email: CLLC@irishrail.ie

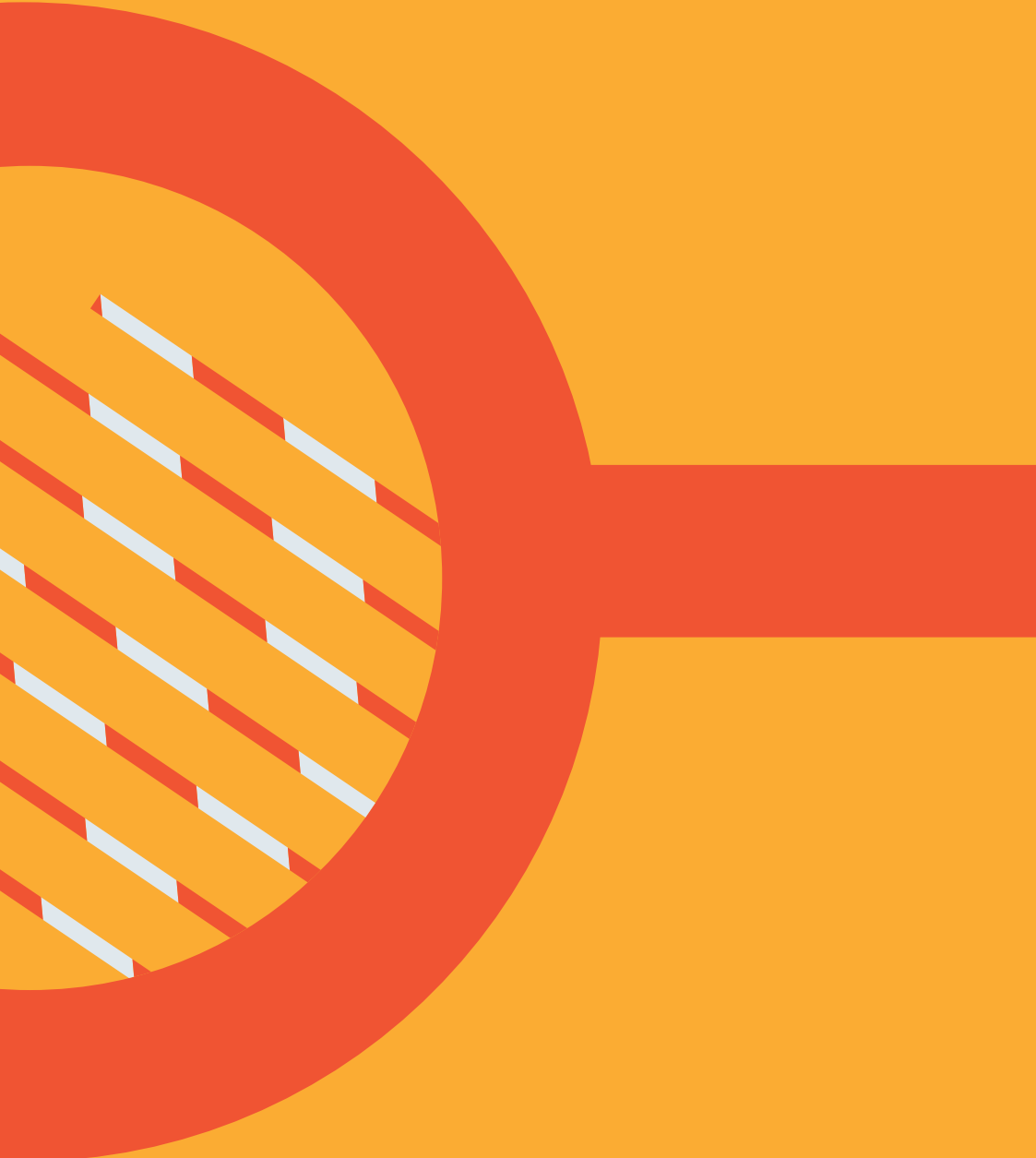
Post: Cork Line Level Crossings Project, c/o Jacobs, Mahon Industrial Estate, Blackrock, Cork, T12 HY54

What happens next?

All submissions and feedback received during the public consultation will be reviewed and considered as part of the ongoing design development on each of the seven level crossings. Relevant feedback will be incorporated into the final design for the Cork Line Level Crossings Project and the accompanying Environmental Impact Assessment Report.

Submissions will not be individually responded to but will be summarised in a consultation report which will be published on www.irishrail.ie/CorkLineLevelCrossings. The Cork Line Level Crossings Project will submit a Railway Order planning application to, An Bord Pleanála for its independent assessment in 2020.





Iarnród Éireann
Infrastructure