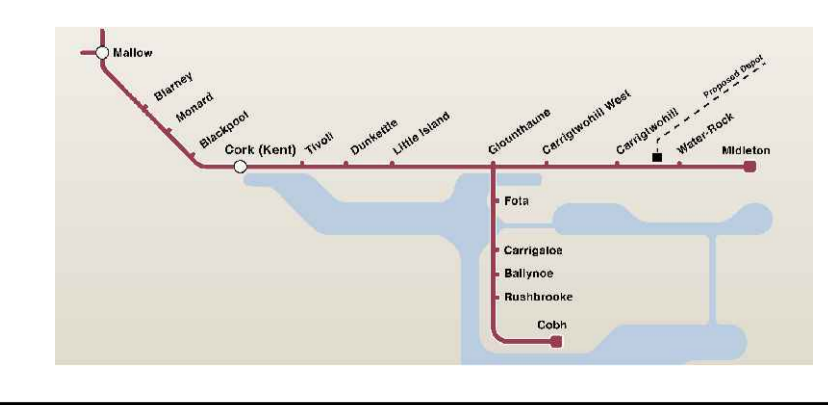


LEGEND:

| | | | |
|--|----------------------------------------|--|----------------------------------------------------------|
| | MAINTENANCE/CONSTRUCTION COMPOUND | | EXISTING RAILWAY LINE |
| | SUB-STATION | | PROPOSED TRACK LOWERING & ELECTRIFICATION |
| | EXISTING RAILWAY STATION MODIFICATIONS | | PROPOSED TRACK ALIGNMENT MODIFICATIONS & ELECTRIFICATION |
| | BRIDGE ALTERATIONS | | PROPOSED RAILWAY ELECTRIFICATION |
| | EXISTING RAILWAY STATION | | |
| | PROPOSED RAILWAY STATION | | |
| | PROPOSED LEVEL CROSSING CLOSURE | | |

© Irish Rail (2026). This drawing is confidential and the copyright in it is owned by Irish Rail. This drawing must not be either loaned, copied or otherwise reproduced in whole or in part or used for any purpose without the prior permission of Irish Rail.
 © Ordnance Survey Ireland and government of Ireland. All O.S. Data used for plans are printed under: "Copyright Ordnance Survey Ireland" Survey No. 0039726. (OSi Aerial Data or OSi Lidar Data) & Survey No. 2026/OSi_NMA_180 (OSi Vector Data).
 All elevations are in metres and relate to OSi Geoid Model (OSGM15) Mean Head as defined by existing Project Control. All Co-ordinates are in Irish Transverse Mercator Grid (ITM) as defined by OSi active GPS station Tallaght College (TLLG).

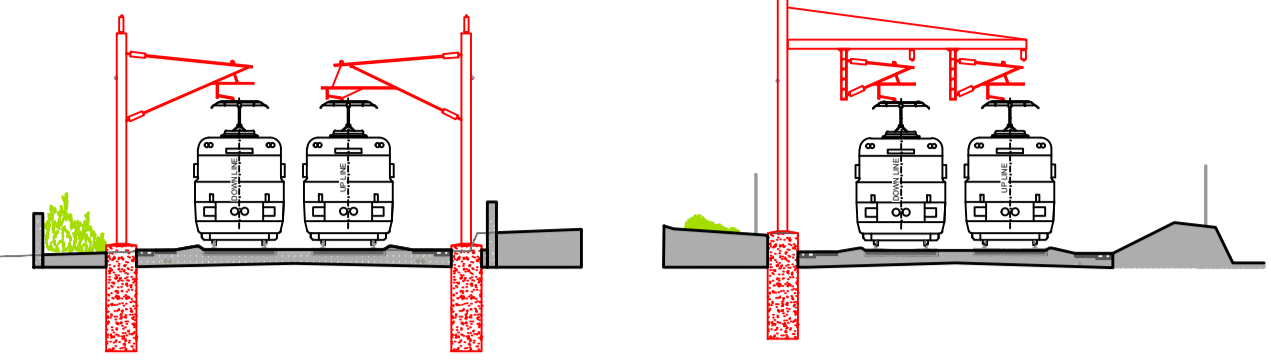


Rialtas na hÉireann
Government of Ireland

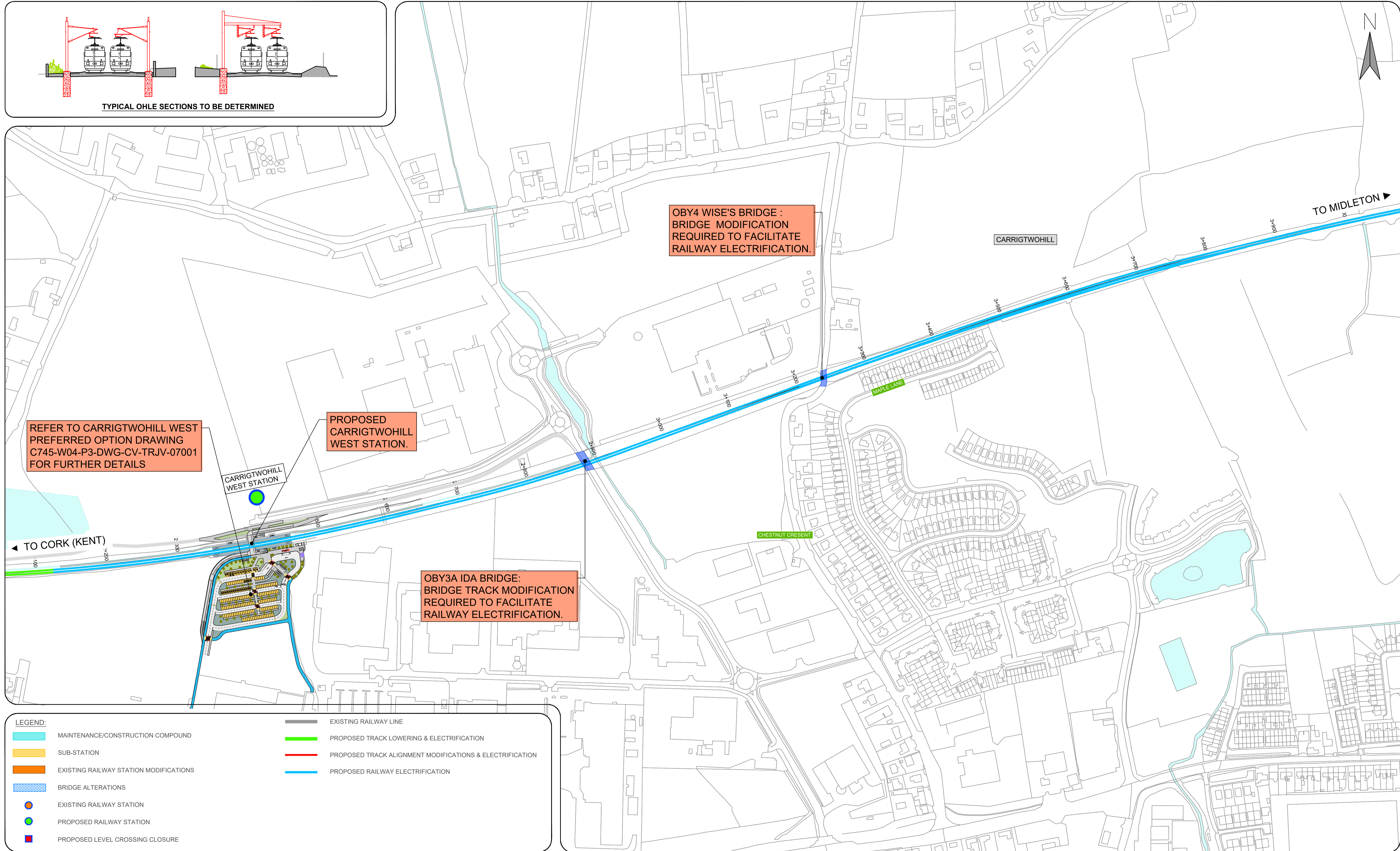
Tionscadal Éireann
Project Ireland
2040

Project Title: CORK AREA COMMUTER RAIL PROGRAMME (Main Works)

Figure Number: FIGURE 032



TYPICAL OHL SECTIONS TO BE DETERMINED



OBY4 WISE'S BRIDGE :
BRIDGE MODIFICATION
REQUIRED TO FACILITATE
RAILWAY ELECTRIFICATION.

CARRIGTWOHILL

TO MIDLETON

REFER TO CARRIGTWOHILL WEST
PREFERRED OPTION DRAWING
C745-W04-P3-DWG-CV-TRJV-07001
FOR FURTHER DETAILS

PROPOSED
CARRIGTWOHILL
WEST STATION.

CARRIGTWOHILL
WEST STATION

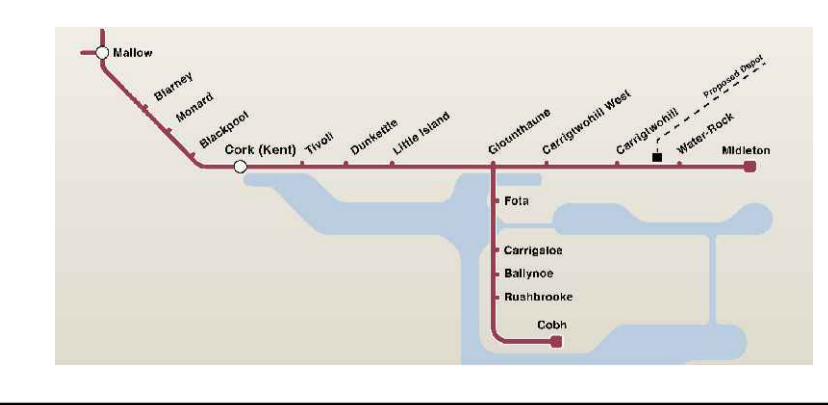
OBY3A IDA BRIDGE:
BRIDGE TRACK MODIFICATION
REQUIRED TO FACILITATE
RAILWAY ELECTRIFICATION.

CHESTNUT CRESENT

LEGEND:

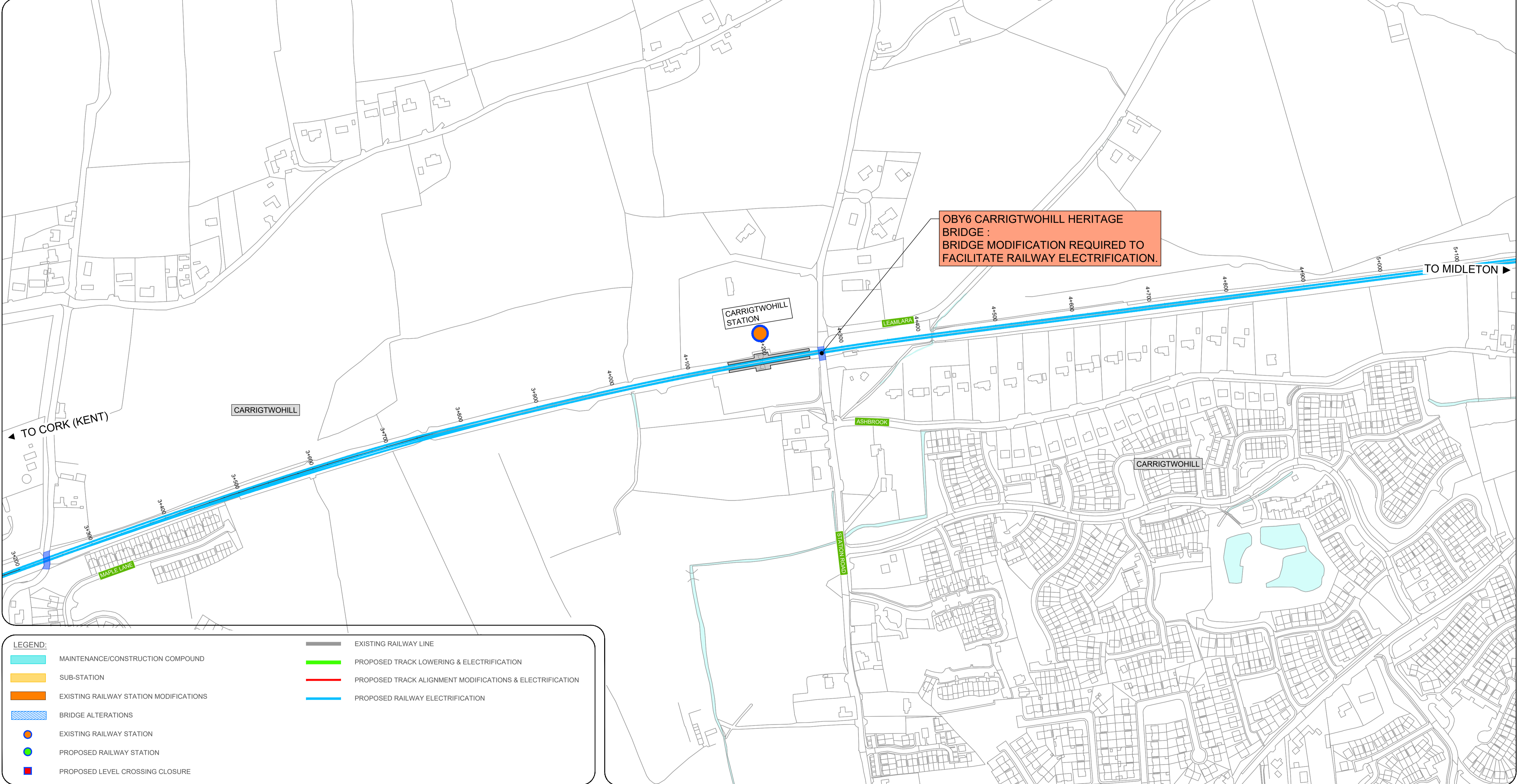
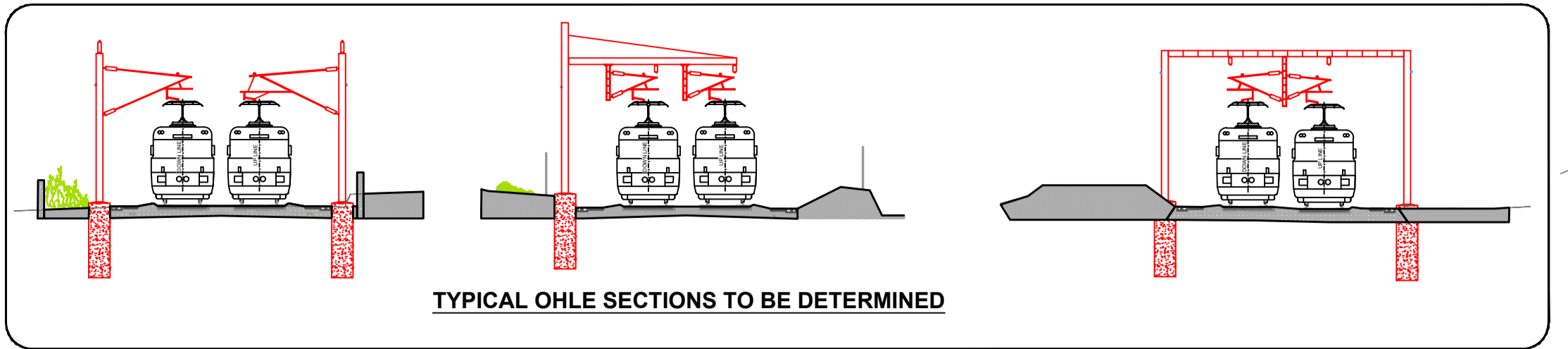
| | | | |
|--|----------------------------------------|--|----------------------------------------------------------|
| | MAINTENANCE/CONSTRUCTION COMPOUND | | EXISTING RAILWAY LINE |
| | SUB-STATION | | PROPOSED TRACK LOWERING & ELECTRIFICATION |
| | EXISTING RAILWAY STATION MODIFICATIONS | | PROPOSED TRACK ALIGNMENT MODIFICATIONS & ELECTRIFICATION |
| | BRIDGE ALTERATIONS | | PROPOSED RAILWAY ELECTRIFICATION |
| | EXISTING RAILWAY STATION | | |
| | PROPOSED RAILWAY STATION | | |
| | PROPOSED LEVEL CROSSING CLOSURE | | |

© Irish Rail (2026). This drawing is confidential and the copyright in it is owned by Irish Rail. This drawing must not be either loaned, copied or otherwise reproduced in whole or in part or used for any purpose without the prior permission of Irish Rail.
 © Ordnance Survey Ireland and government of Ireland. All O.S. Data used for plans are printed under: "Copyright Ordnance Survey Ireland" Survey No. 0039726. (OSi Aerial Data or OSi Lidar Data) & Survey No. 2026/OSi_NMA_180 (OSi Vector Data).
 All elevations are in metres and relate to OSi Geoid Model (OSGM15) Mean Head as defined by existing Project Control. All Co-ordinates are in Irish Transverse Mercator Grid (ITM) as defined by OSi active GPS station Tallaght College (TLLG).



Project Title:
CORK AREA COMMUTER RAIL PROGRAMME
(Main Works)

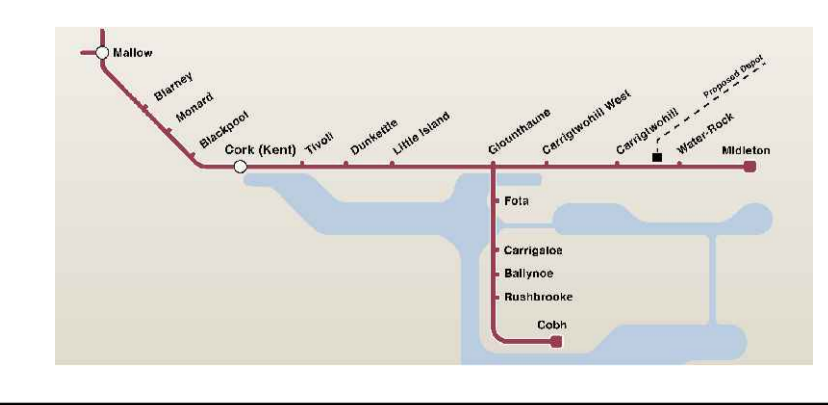
Figure Number:
FIGURE 033



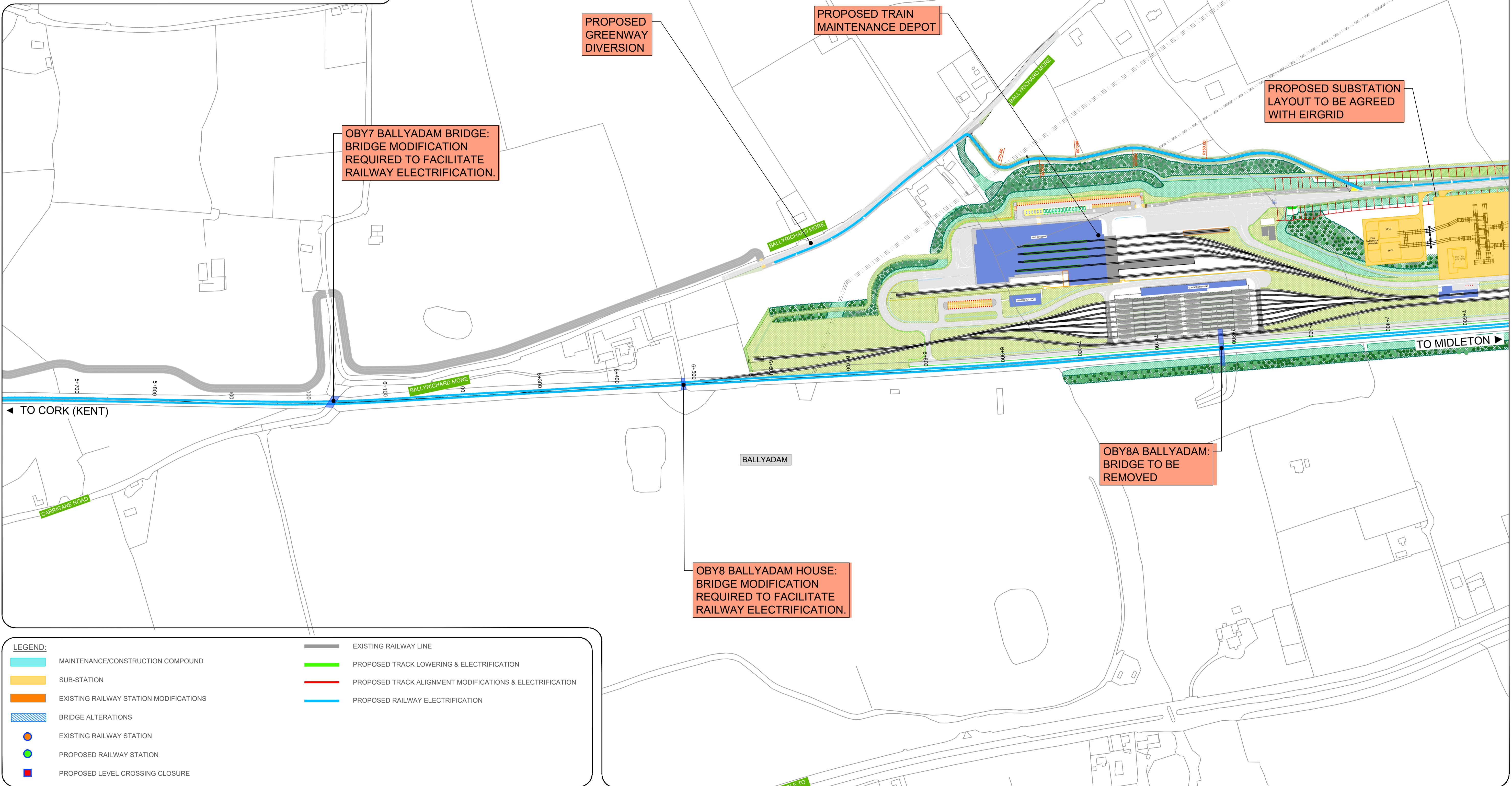
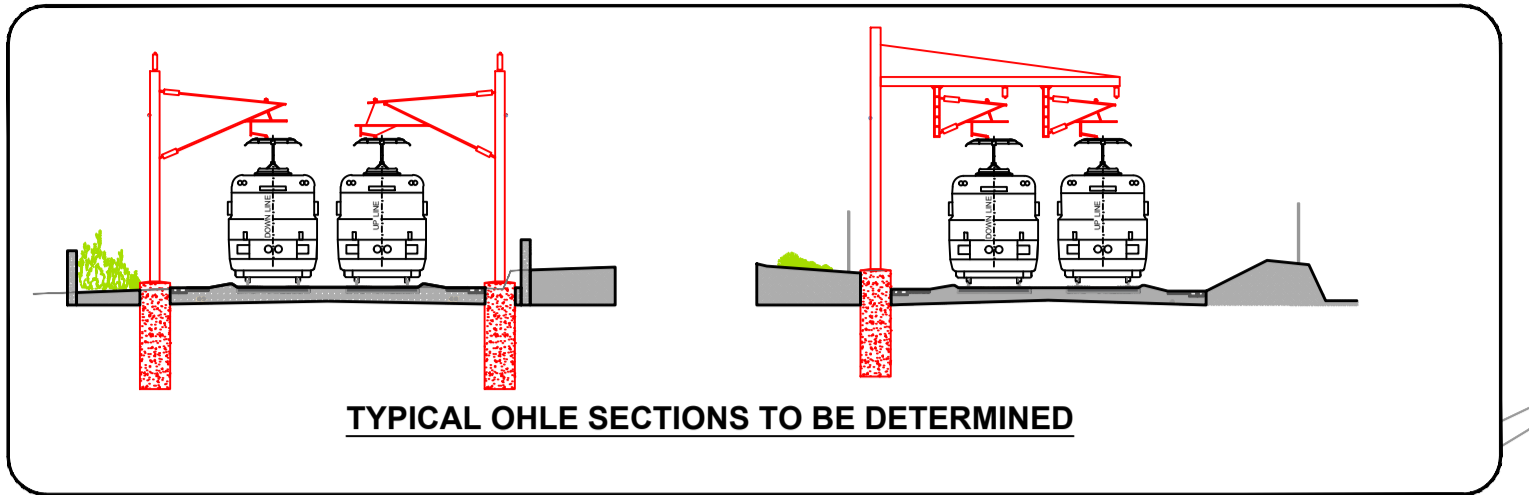
LEGEND:

| | | | |
|--|----------------------------------------|--|----------------------------------------------------------|
| | MAINTENANCE/CONSTRUCTION COMPOUND | | EXISTING RAILWAY LINE |
| | SUB-STATION | | PROPOSED TRACK LOWERING & ELECTRIFICATION |
| | EXISTING RAILWAY STATION MODIFICATIONS | | PROPOSED TRACK ALIGNMENT MODIFICATIONS & ELECTRIFICATION |
| | BRIDGE ALTERATIONS | | PROPOSED RAILWAY ELECTRIFICATION |
| | EXISTING RAILWAY STATION | | |
| | PROPOSED RAILWAY STATION | | |
| | PROPOSED LEVEL CROSSING CLOSURE | | |

© Irish Rail (2026). This drawing is confidential and the copyright in it is owned by Irish Rail. This drawing must not be either loaned, copied or otherwise reproduced in whole or in part or used for any purpose without the prior permission of Irish Rail.
 © Ordnance Survey Ireland and government of Ireland. All O.S. Data used for plans are printed under: "Copyright Ordnance Survey Ireland" Survey No. 0039726. (OSi Aerial Data or OSi Lidar Data) & Survey No. 2026/OSi_NMA_180 (OSi Vector Data).
 All elevations are in metres and relate to OSi Geoid Model (OSGM15) Mean Head as defined by existing Project Control. All Co-ordinates are in Irish Transverse Mercator Grid (ITM) as defined by OSi active GPS station Tallaght College (TLLG).



Project Title: CORK AREA COMMUTER RAIL PROGRAMME (Main Works)
 Figure Number: FIGURE 034



LEGEND:

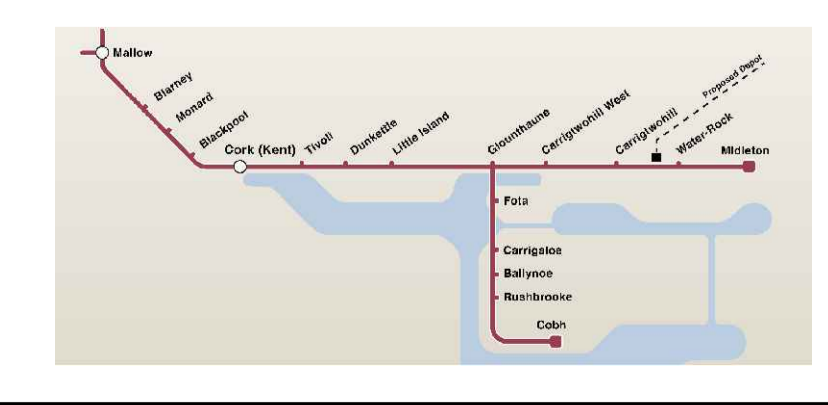
| | | | |
|--|----------------------------------------|--|----------------------------------------------------------|
| | MAINTENANCE/CONSTRUCTION COMPOUND | | EXISTING RAILWAY LINE |
| | SUB-STATION | | PROPOSED TRACK LOWERING & ELECTRIFICATION |
| | EXISTING RAILWAY STATION MODIFICATIONS | | PROPOSED TRACK ALIGNMENT MODIFICATIONS & ELECTRIFICATION |
| | BRIDGE ALTERATIONS | | PROPOSED RAILWAY ELECTRIFICATION |
| | EXISTING RAILWAY STATION | | |
| | PROPOSED RAILWAY STATION | | |
| | PROPOSED LEVEL CROSSING CLOSURE | | |

© Irish Rail (2026). This drawing is confidential and the copyright in it is owned by Irish Rail. This drawing must not be either loaned, copied or otherwise reproduced in whole or in part or used for any purpose without the prior permission of Irish Rail.

© Ordnance Survey Ireland and government of Ireland. All O.S. Data used for plans are printed under: "Copyright Ordnance Survey Ireland" Survey No. 0039726. (OSi Aerial Data or OSi Lidar Data) & Survey No. 2026/OSi_NMA_180 (OSi Vector Data).

All elevations are in metres and relate to OSi Geoid Model (OSGM15) Main Head as defined by existing Project Control.

All Co-ordinates are in Irish Transverse Mercator Grid (ITM) as defined by OSi active GPS station Tallaght College (TLLG).



Rialtas na hÉireann
Government of Ireland

Tionscadal Éireann
Project Ireland
2040

CIE

NTA
Cearta Nuálaíochas Tempar
National Transport Authority

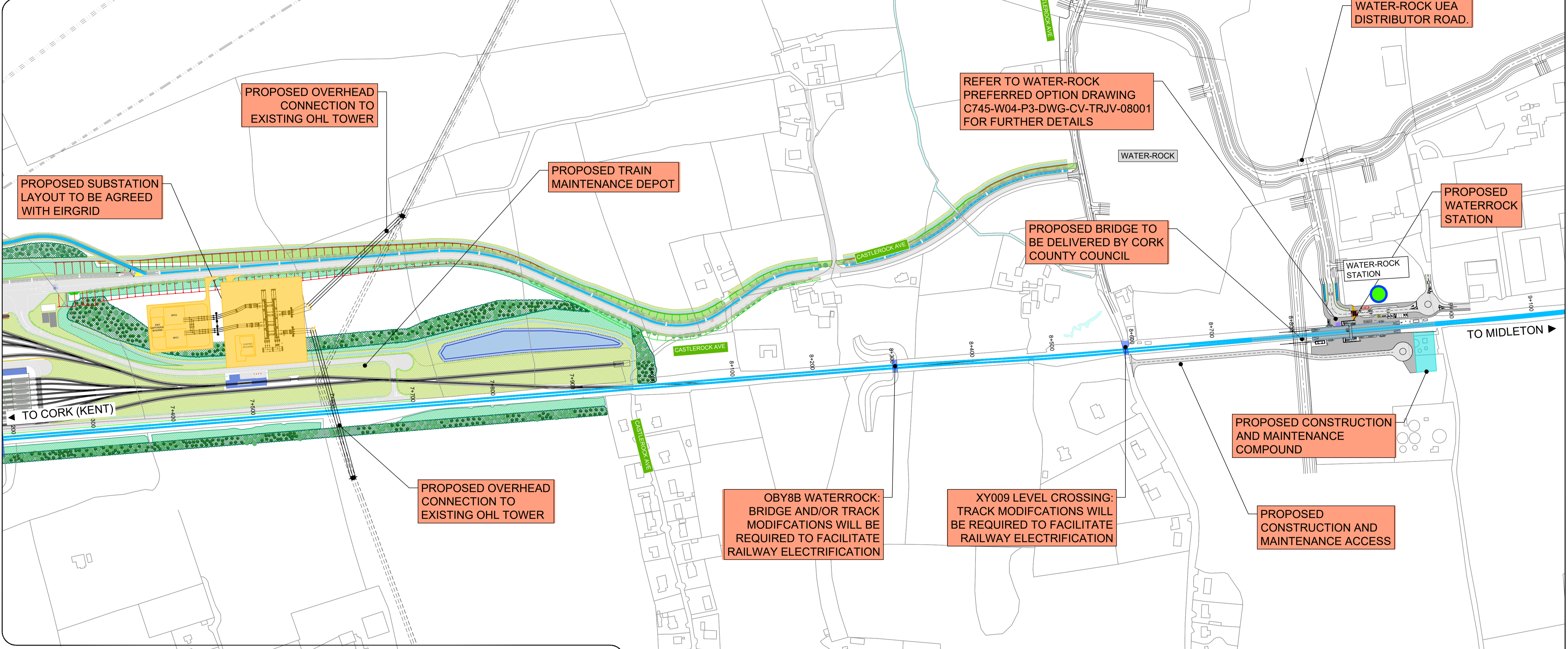
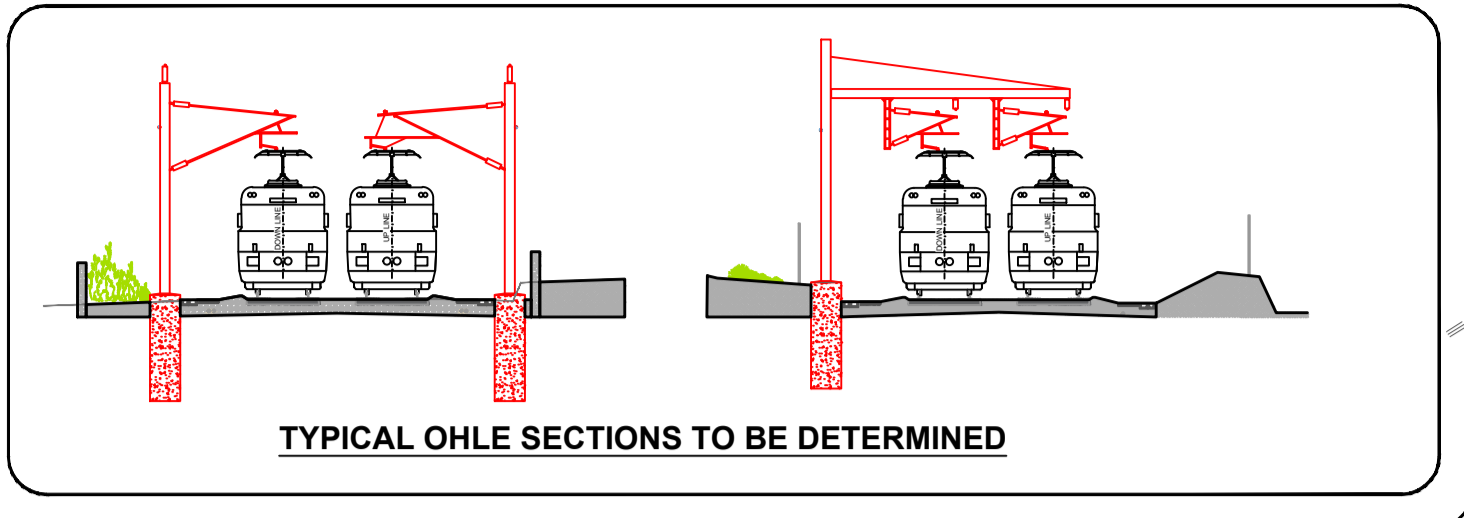
Iarnród Éireann
Irish Rail

TUC RAIL
IRISH RAIL PROGRAMME

TYPSA
IIRIOD
ROUGHAN & O'DONOVAN

Project Title:
CORK AREA COMMUTER RAIL PROGRAMME
(Main Works)

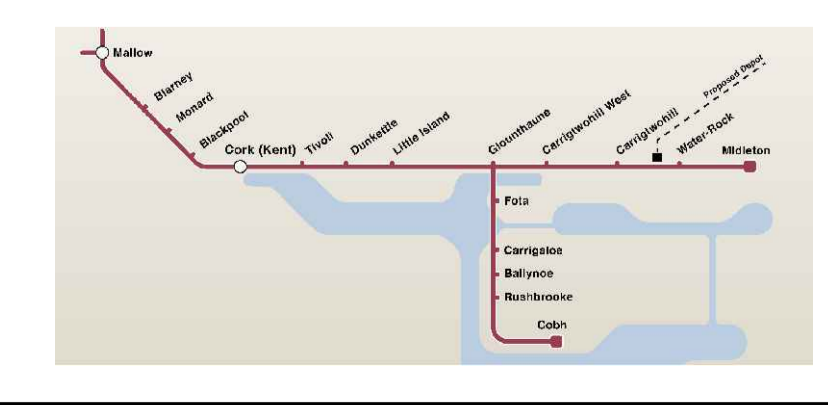
Figure Number:
FIGURE 035



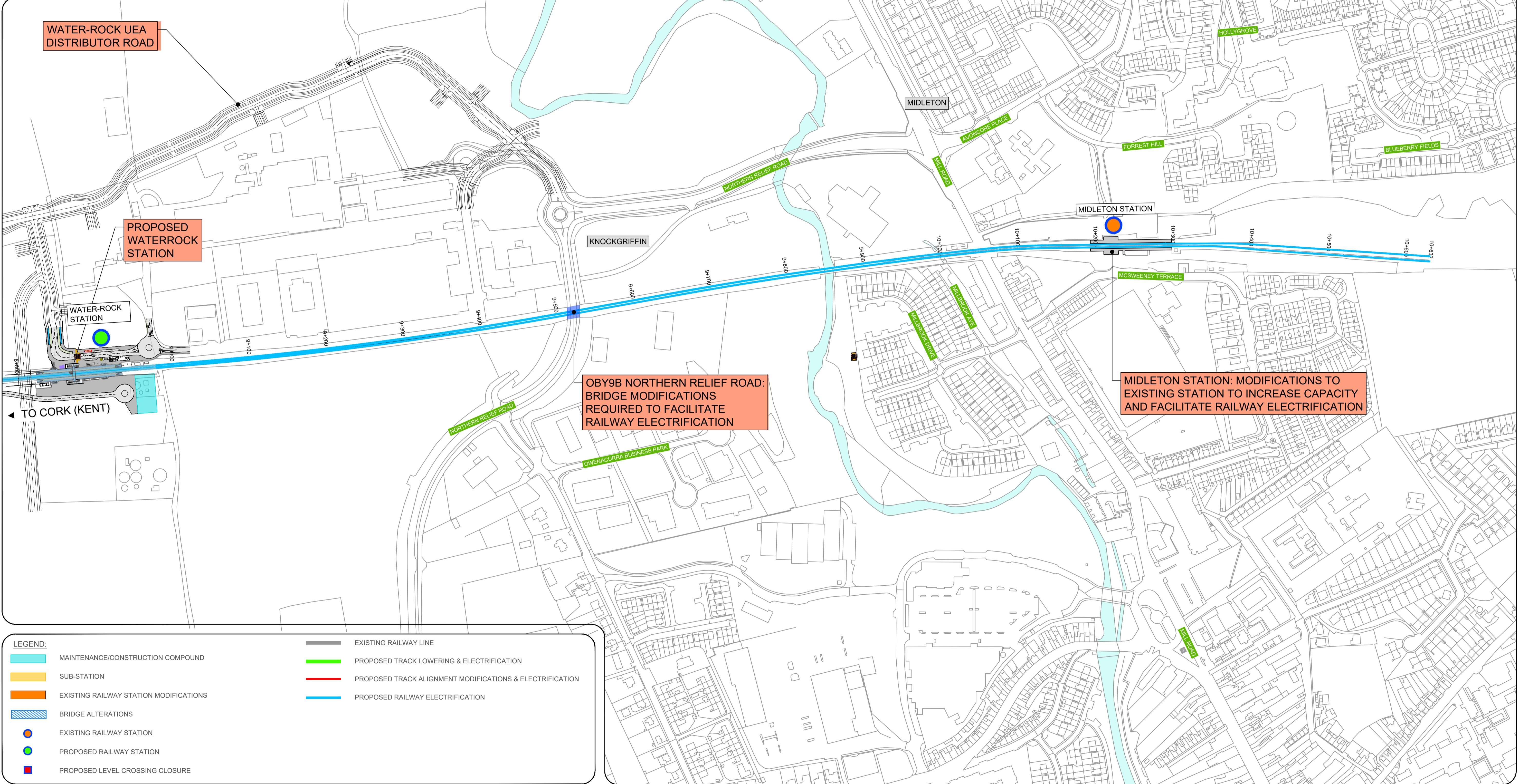
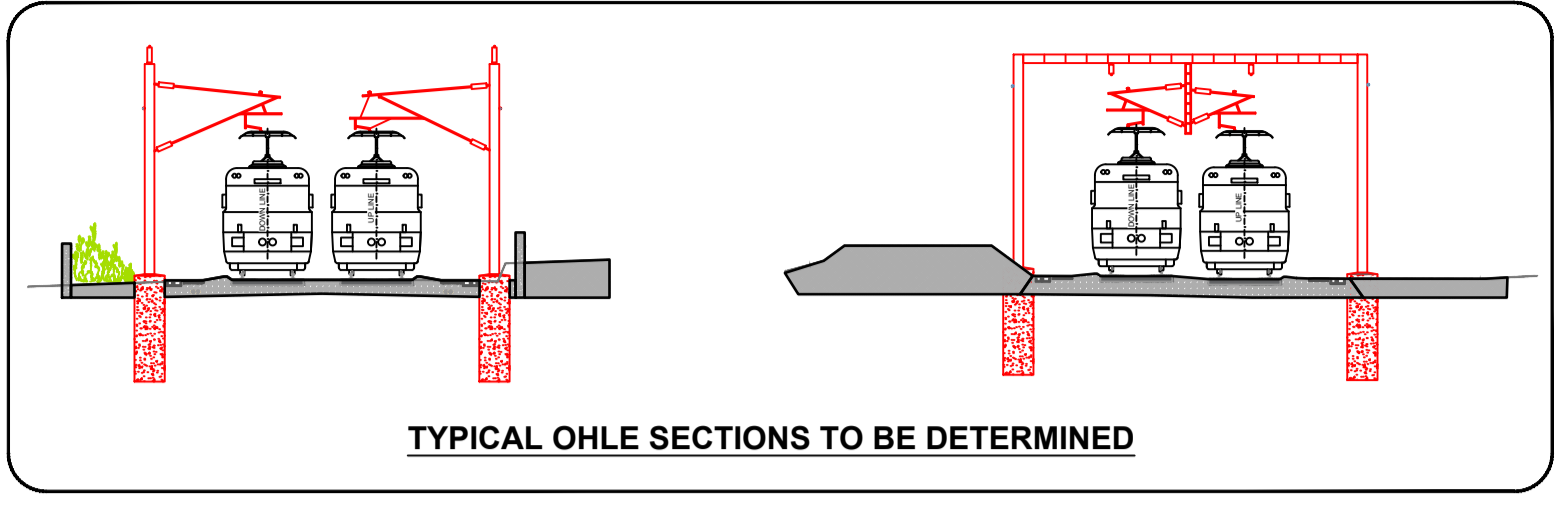
LEGEND:

| | | | |
|--|----------------------------------------|--|----------------------------------------------------------|
| | MAINTENANCE/CONSTRUCTION COMPOUND | | EXISTING RAILWAY LINE |
| | SUB-STATION | | PROPOSED TRACK LOWERING & ELECTRIFICATION |
| | EXISTING RAILWAY STATION MODIFICATIONS | | PROPOSED TRACK ALIGNMENT MODIFICATIONS & ELECTRIFICATION |
| | BRIDGE ALTERATIONS | | PROPOSED RAILWAY ELECTRIFICATION |
| | EXISTING RAILWAY STATION | | |
| | PROPOSED RAILWAY STATION | | |
| | PROPOSED LEVEL CROSSING CLOSURE | | |

© Irish Rail (2026). This drawing is confidential and the copyright in it is owned by Irish Rail. This drawing must not be either loaned, copied or otherwise reproduced in whole or in part or used for any purpose without the prior permission of Irish Rail.
 © Ordnance Survey Ireland and government of Ireland. All O.S. Data used for plans are printed under: "Copyright Ordnance Survey Ireland" Survey No. 0039726. (OSi Aerial Data or OSi Lidar Data) & Survey No. 2026/OSi_NMA_180 (OSi Vector Data).
 All elevations are in metres and relate to OSi Geoid Model (OSGM15) Main Head as defined by existing Project Control. All Co-ordinates are in Irish Transverse Mercator Grid (ITM) as defined by OSi active GPS station Tallaght College (TLLG).



Project Title: CORK AREA COMMUTER RAIL PROGRAMME (Main Works)
 Figure Number: FIGURE 036

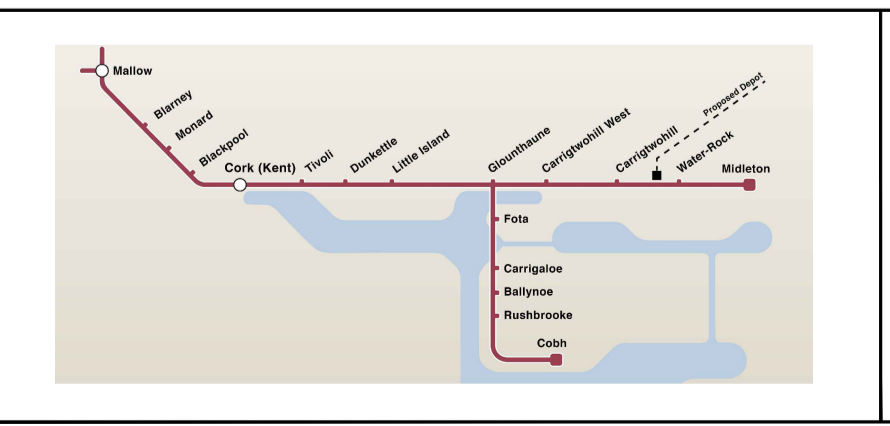


© Irish Rail (2026). This drawing is confidential and the copyright in it is owned by Irish Rail. This drawing must not be either loaned, copied or otherwise reproduced in whole or in part or used for any purpose without the prior permission of Irish Rail.

© Ordnance Survey Ireland and government of Ireland. All O.S. Data used for plans are printed under: "Copyright Ordnance Survey Ireland" Survey No. 0039726. (OSi Aerial Data or OSi Lidar Data) & Survey No. 2026/OSi_NMA_180 (OSi Vector Data).

All elevations are in metres and relate to OSi Geoid Model (OSGM15) Mean Head as defined by existing Project Control.

All Co-ordinates are in Irish Transverse Mercator Grid (ITM) as defined by OSi active GPS station Tallaght College (TLLG).



Rialtas na hÉireann
Government of Ireland

Tionscadal Éireann
Project Ireland
2040

CIE

NTA
Gníomhaireacht Náisiúnta
National Transport Authority

Iarnród Éireann
Irish Rail

TUC RAIL

TYPSA

PROD
ROUGHAN & O'DONOVAN

Project Title:
CORK AREA COMMUTER RAIL PROGRAMME
(Main Works)

Figure Number:
FIGURE 037