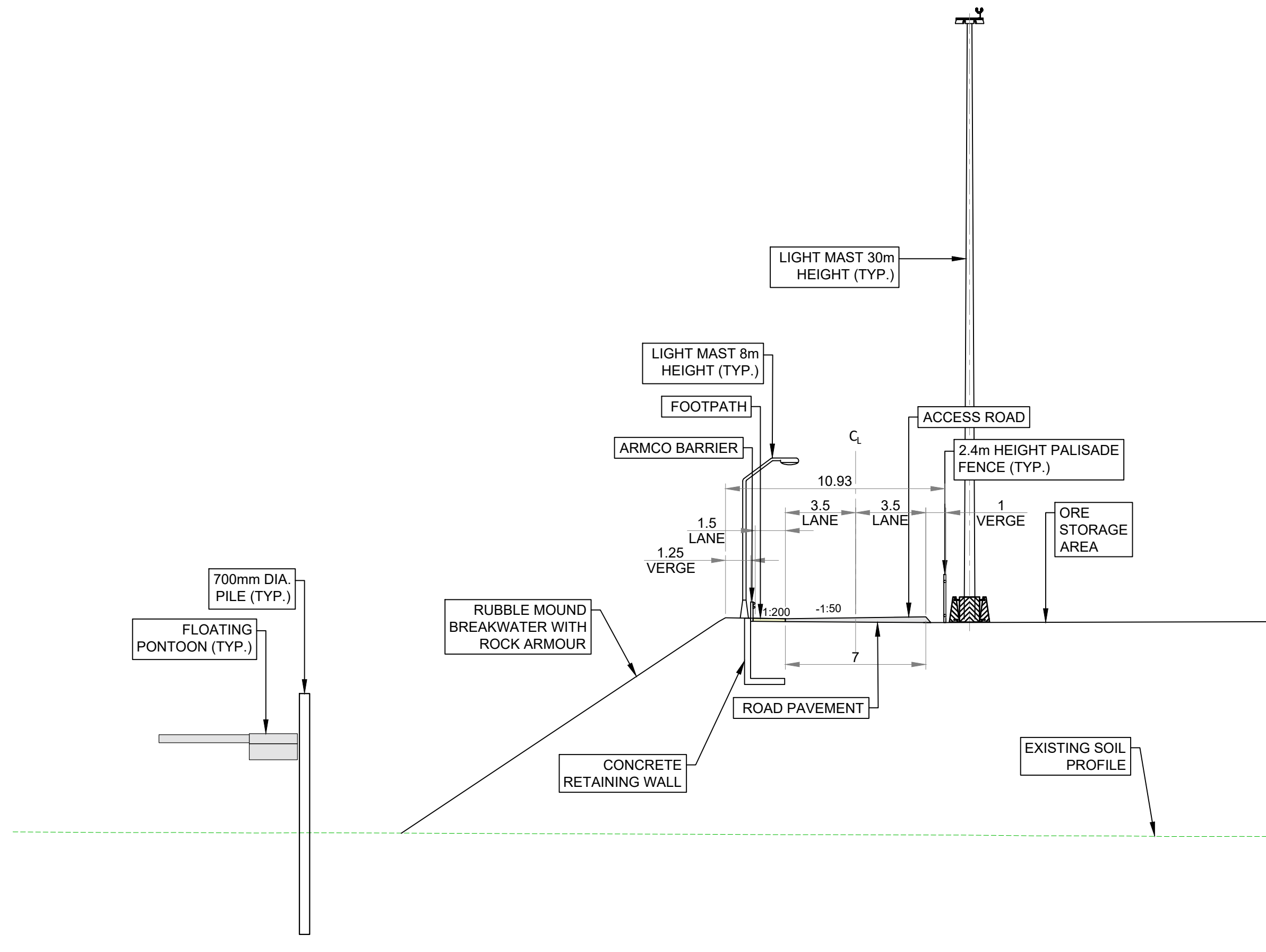


TYPICAL SECTION E-E- CH.120.0m  
SCALE 1:200

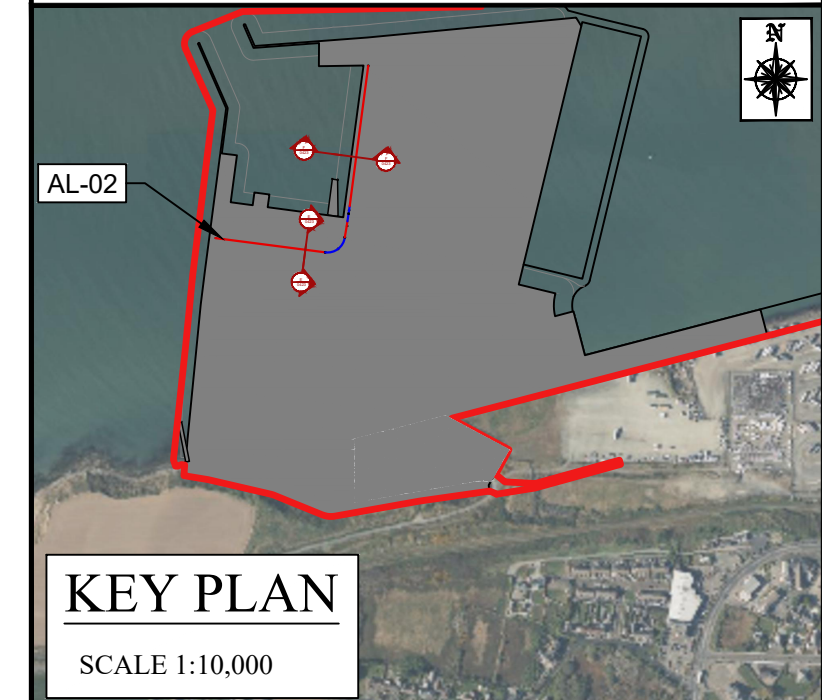


TYPICAL SECTION F-F- CH.290.0m  
SCALE 1:200

- NOTES:
- ALL DIMENSIONS ARE IN METERS UNLESS OTHERWISE STATED
  - USE DIMENSIONS ON DRAWINGS (DO NOT SCALE FROM DRAWINGS)
  - COORDINATES IN ITM.
  - ORDNANCE SURVEY IRELAND LICENCE No. 50428728 10/24. SHEET No. 5644-D, 5645-C, 5714-B, 5715-A, AND 5715-B.
  - ALL LEVELS ARE QUOTED RELATIVE TO ORDNANCE DATUM (REFERENCE DATUM) WHERE OD LEVELS ARE USED ON SECTIONS AND ELEVATIONS, THE RESPECTIVE CHART DATUM LEVEL IS NOTED BESIDE THE OD LEVEL IN BRACKETS.
  - ORDNANCE DATUM MALIN mOD

CHART DATUM (mCD)

1.69 m
  - SEE DRAWING IN CONJUNCTION WITH DRAWING ROREH-PL-DR-GDG-C-0422.



**GDG**  
GAVIN & DOHERTY  
GEOSOLUTIONS

Unit A2,  
Nutmeg Office Park,  
Rathfarnham,  
Dublin 14, D14 X627  
Ireland.  
T +353 (0)1-2071000  
E info@gdgeo.com  
www.gdgeo.com

ISSUED AS: **FOR PLANNING**

CLIENT: **Iarnród Éireann  
Irish Rail**

PARTNER: **NICHOLAS  
O'DWYER**

PROJECT TITLE: **ROSSLARE EUROPORT  
ORE HUB**

DRAWING No: **ROREH-PL-DR- GDG-C- 0423**

Status: **-P3** Revision: **-03**

DRAWING TITLE: **ROSSLARE ORE HUB  
ACCESS ROAD ALIGNMENT 02  
TYPICAL SECTIONS**

SCALE: **1:200** SHEET SIZE: **A1** DATE: **19/11/2025**

DRAWN BY: **EFC** CHECKED BY: **M.F.** APPROVED BY: **D.O'L**



"FUNDED BY THE EUROPEAN UNION. VIEWS AND OPINIONS EXPRESSED ARE HOWEVER THOSE OF THE AUTHOR(S) ONLY AND DO NOT NECESSARILY REFLECT THOSE OF THE EUROPEAN UNION. NEITHER THE EUROPEAN UNION NOR ANY GRANTING AUTHORITY CAN BE HELD RESPONSIBLE FOR THEM."