



Ireland's Gateway to Europe & ORE Hub



Co-financed by the Connecting Europe
Facility of the European Union



**Rosslare
Europort**



**Iarnród Éireann
Irish Rail**

Rosslare Europort Ireland's Gateway to Europe and ORE Hub

Rosslare Europort is embarking on an exciting and unique journey to become Ireland's first Offshore Renewable Energy (ORE) hub. This hub will not only service the emerging offshore wind industry, but also play a pivotal role in supporting the government's offshore wind target of seven gigawatts of power from ORE by 2030.

Ports are not just crucial for offshore wind projects, they also have a significant economic impact. This proposed development, the first of its kind in a port within the Republic of Ireland, will support the delivery of Ireland's Climate Action Plan as well as being a welcome boost to the South East region by supporting new industry with the potential to generate up to 2,000 new jobs.

Why Rosslare Europort?

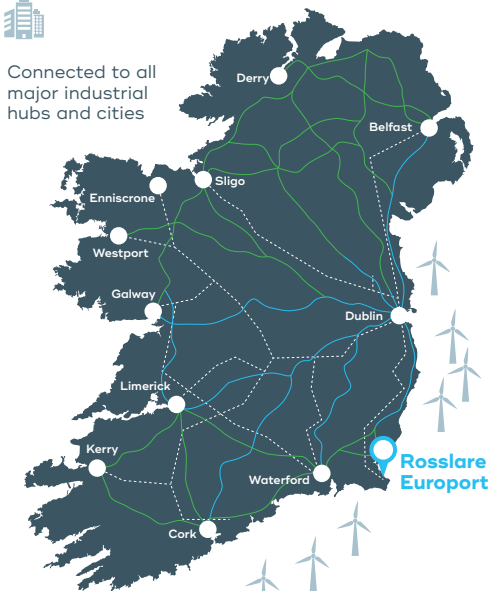
Ireland has one of the best offshore wind resources in the world, with a strong and consistent wind supply in its maritime territory, spanning 490,000 sqkm. With several significant offshore wind projects planned nationally, Rosslare Europort is ideally positioned between 50-100 nautical miles of several planned developments in the Irish and Celtic seas.

At Rosslare Europort, port access and key infrastructure can be provided to serve the different stages of offshore wind projects, including marshalling, assembly, staging, and load-out of key components, as well as the ongoing operation, maintenance, and crew transfers that will take place when the industry is up and running. This will create diverse jobs, from skilled technicians and engineers to administrative and support staff, providing sustainable and inclusive economic growth for the region.

**We are connected...
...nationally**



Connected to all major industrial hubs and cities



Connected to all inland and offshore future development



Key Project Elements

The proposed plans for the ORE hub at Rosslare Europort will include the expansion of the existing site and the upgrading of existing port infrastructure in order to facilitate and accommodate the construction and operation of offshore wind farms. The proposed works will include:

- Approximately 21 hectares of land reclamation
- A new heavy lift berth to accommodate ORE vessels
- A second berth capable of handling Roll-On Roll-Off activities and Load-On Load-Off of components
- Dredging of an approach channel
- A new 'small boat' harbour with enhanced access
- Operations & Maintenance (O&M) facilities to include warehousing, offices and parking
- Potential future accommodation of a rail spur connection to site
- New access road to the small boat harbour and site access to the ORE facility

About the Project

Since 2022, Rosslare Europort has been working with specialist ORE experts and advisors on feasibility and concept designs. Having collated various preliminary data, the project team developed initial design concepts, which were presented to the public and various stakeholders in December 2023. Further improvements to the initial designs have been completed and are currently being presented to stakeholders.



Overhead view of the proposed ORE hub development, in the context of the ongoing Terminal 7 and Rosslare Europort access road projects within Rosslare Europort.

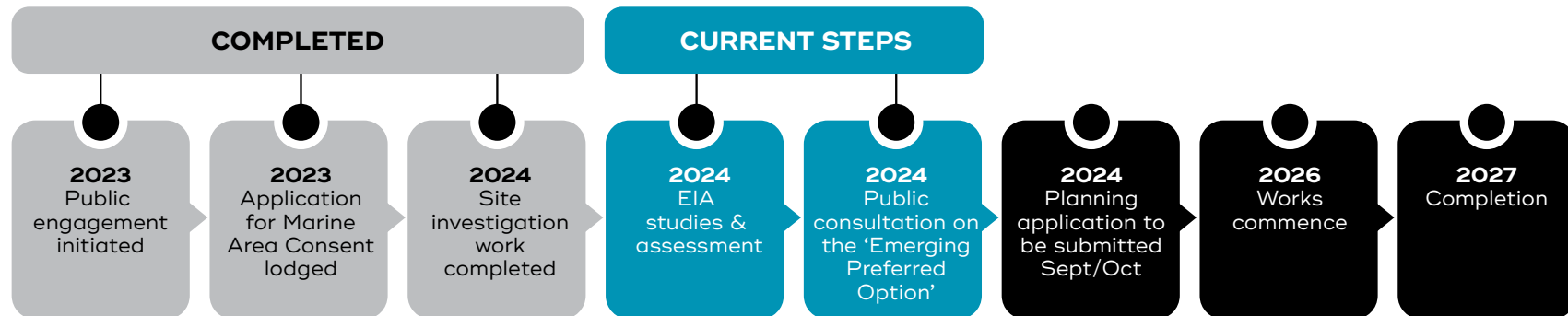


Oblique view of the proposed ORE hub development at Rosslare Europort, with the proposed new small boat harbour shown in the foreground.

Next Steps

This transformative project, which is still in the preliminary design phase, wishes to invite further participation from the local community and other key stakeholders to help inform the final designs and achieve the best possible outcome.

Following this current round of community and stakeholder engagement (May/June 2024), the project design will be finalised. A planning application to An Bord Pleanála is intended for late 2024.



These timeframes are subject to successful grant of planning as well as allocation of funding for the project.

How to Engage

The public consultation is taking place from Wednesday, 22nd May 2024 to Sunday, 23rd June 2024.

You are invited to contribute to this consultation process to express opinions on the emerging preferred option for the ORE hub at Rosslare Europort.

You are also invited to attend our public information evening to learn more about the project and meet with members of the design team.



Rosslare Europort Terminal Building
Thursday, 30th May 2024: 3:00pm to 8:00pm

You can provide feedback by email or by post:

▶ **Email the project team:** rorehub@irishrail.ie

▶ **Or post your feedback to:**

ORE Hub Consultation,
Rosslare Europort,
Ballygillane Big,
Rosslare Harbour,
Co. Wexford,
Ireland.
Y35 PH4X

Alternatively, visit our project website for a more comprehensive overview of the project.

www.rosslareorehub.ie

