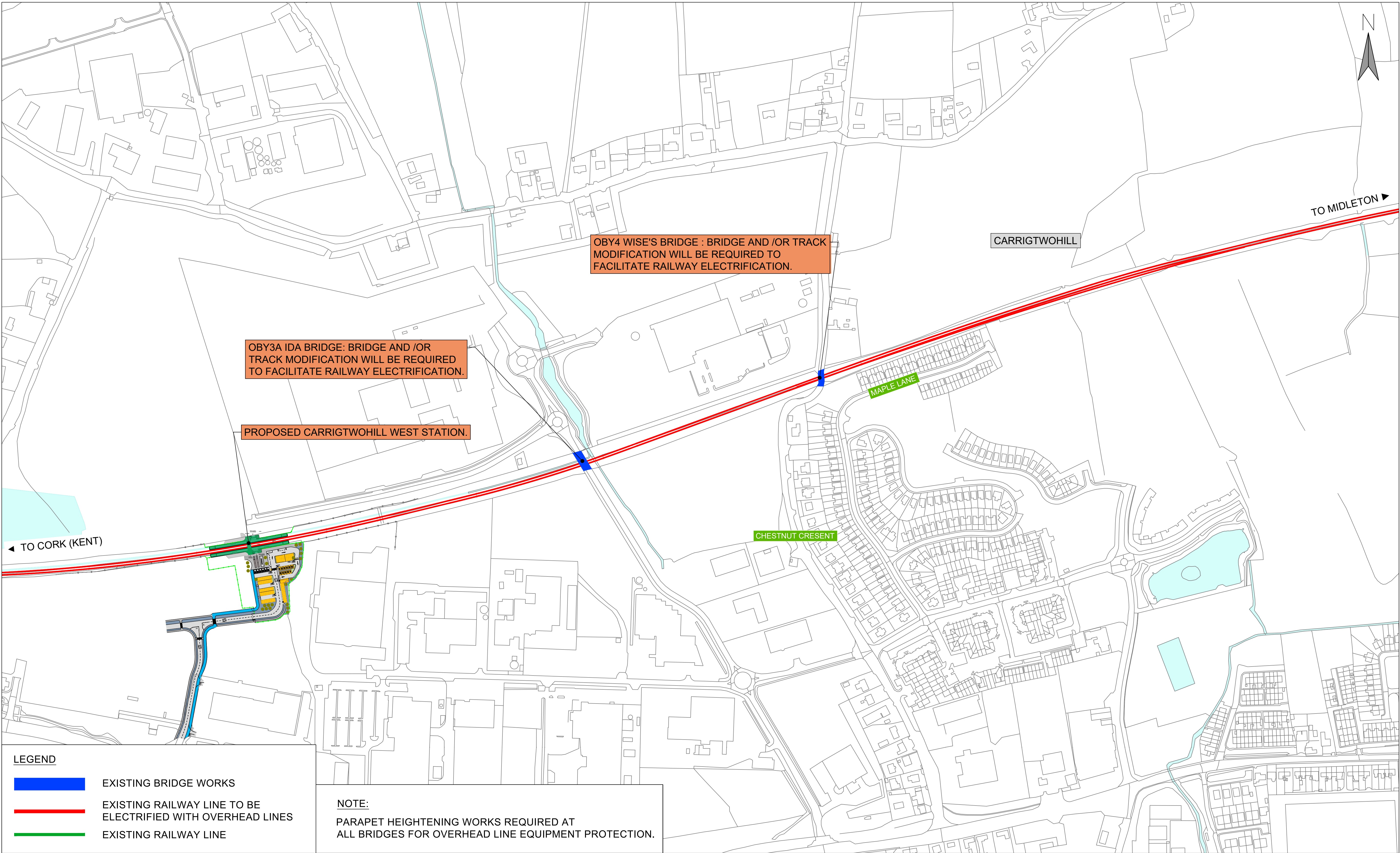


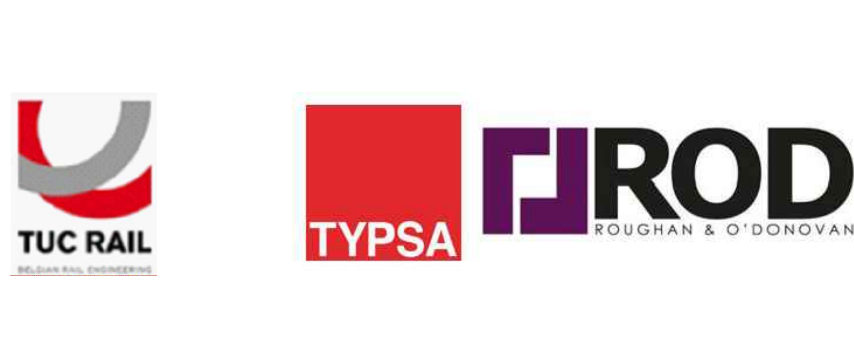
© Irish Rail (2022). This drawing is confidential and the copyright in it is owned by Irish Rail. This drawing must not be either loaned, copied or otherwise reproduced in whole or in part or used for any purpose without the prior permission of Irish Rail.
© Ordnance Survey Ireland and government of Ireland. All O.S. Data used for plans are printed under: "Copyright Ordnance Survey Ireland" Survey No. 0039722. (OSi Aerial Data or OSi Lidar Data) & Survey No. 2022/OSi_NMA_180 (OSi Vector Data).
All elevations are in metres and relate to OSi Geoid Model (OSGM02) Malin Head as defined by existing Project Control.
All Co-ordinates are in Irish Transverse Mercator Grid (ITM) as defined by OSi active GPS station Tallaght College (TLLG).



Project Title: CORK AREA COMMUTER RAIL PROGRAMME (Main Works)
Figure Number: FIGURE 012

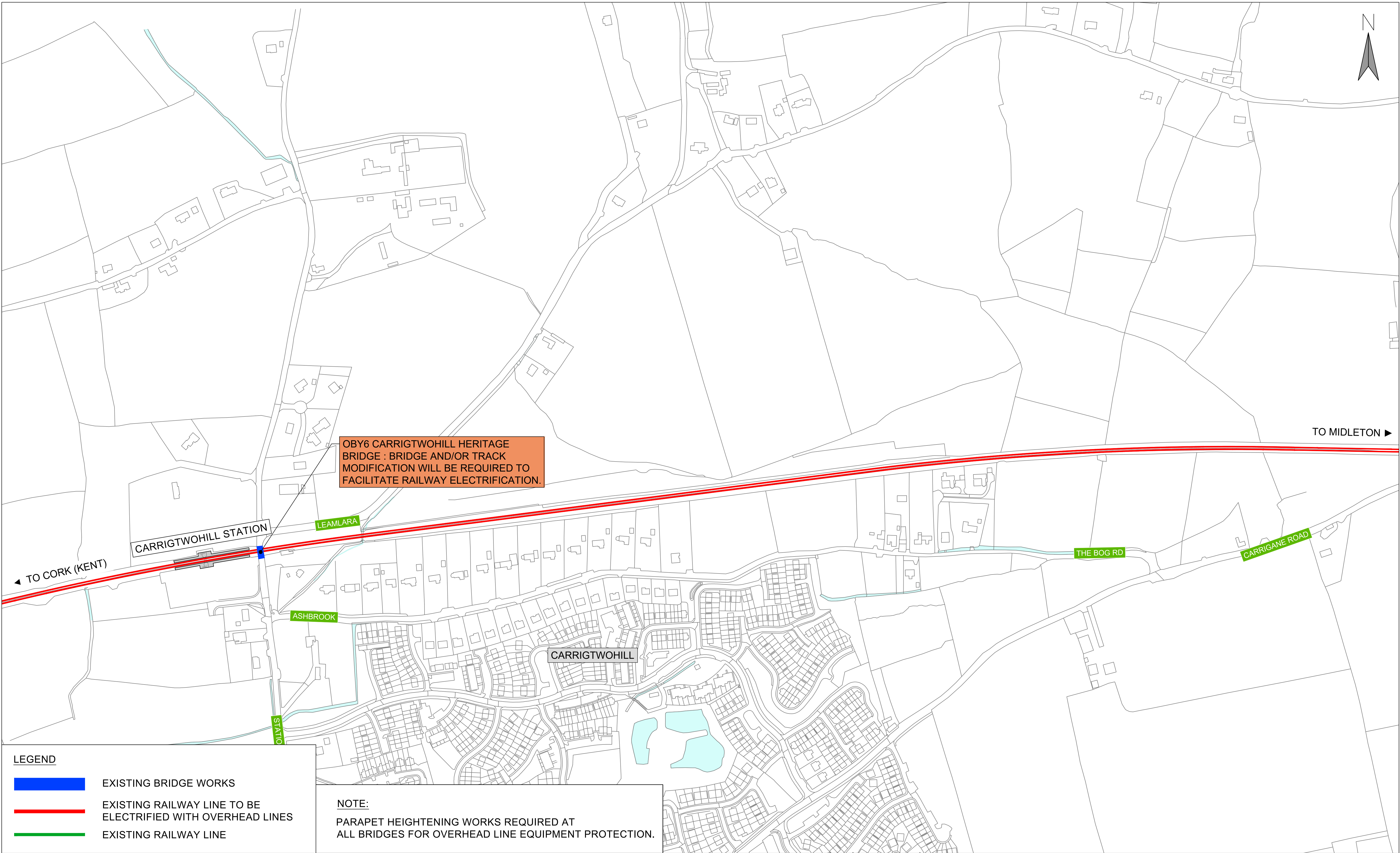


© Irish Rail (2022). This drawing is confidential and the copyright in it is owned by Irish Rail. This drawing must not be either loaned, copied or otherwise reproduced in whole or in part or used for any purpose without the prior permission of Irish Rail.
© Ordnance Survey Ireland and government of Ireland. All O.S. Data used for plans are printed under: "Copyright Ordnance Survey Ireland" Survey No. 0039722. (OSI Aerial Data or OSI Lidar Data) & Survey No. 2022/OSI_NMA_180 (OSI Vector Data).
All elevations are in metres and relate to OSI Geoid Model (OSGM02) Malin Head as defined by existing Project Control.
All Co-ordinates are in Irish Transverse Mercator Grid (ITM) as defined by OSI active GPS station Tallaght College (TLLG).



Project Title: CORK AREA COMMUTER RAIL PROGRAMME (Main Works)

Figure Number: FIGURE 013



© Irish Rail (2022). This drawing is confidential and the copyright in it is owned by Irish Rail. This drawing must not be either loaned, copied or otherwise reproduced in whole or in part or used for any purpose without the prior permission of Irish Rail.

© Ordnance Survey Ireland and government of Ireland. All O.S. Data used for plans are printed under: "Copyright Ordnance Survey Ireland" Survey No. 0039722. (OSI Aerial Data or OSI Lidar Data) & Survey No. 2022/OSI_NMA_180 (OSI Vector Data).

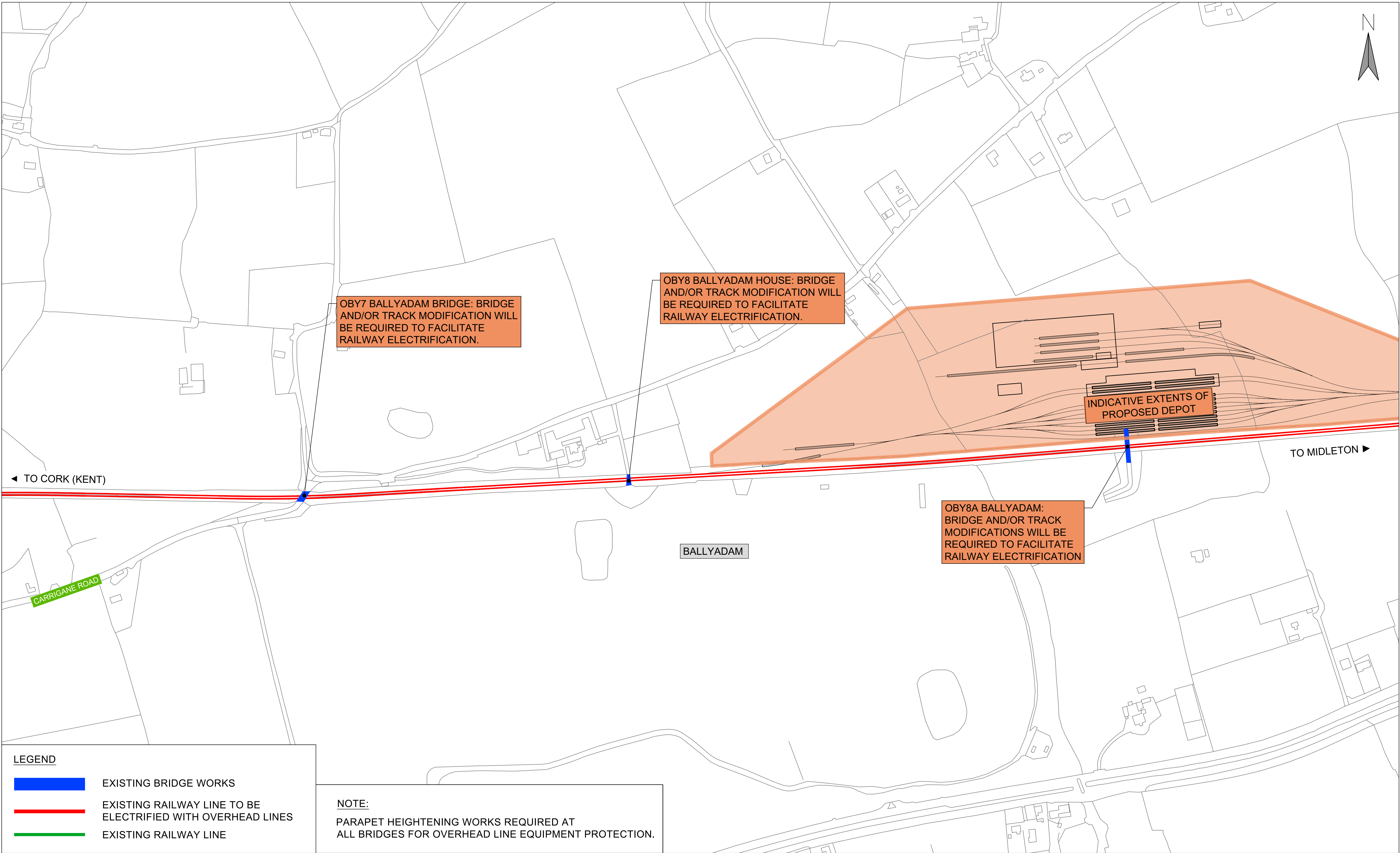
All elevations are in metres and relate to OSI Geoid Model (OSGM02) Malin Head as defined by existing Project Control.

All Co-ordinates are in Irish Transverse Mercator Grid (ITM) as defined by OSI active GPS station Tallaght College (TLLG).



Project Title:
CORK AREA COMMUTER RAIL PROGRAMME
(Main Works)

Figure Number:
FIGURE 014

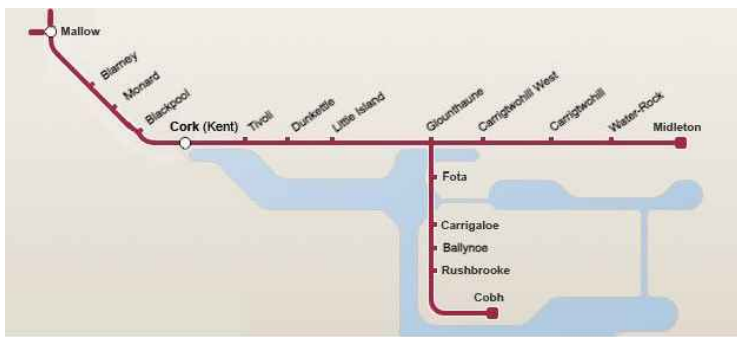


LEGEND

- EXISTING BRIDGE WORKS
- EXISTING RAILWAY LINE TO BE ELECTRIFIED WITH OVERHEAD LINES
- EXISTING RAILWAY LINE

NOTE:
PARAPET HEIGHTENING WORKS REQUIRED AT ALL BRIDGES FOR OVERHEAD LINE EQUIPMENT PROTECTION.

© Irish Rail (2022). This drawing is confidential and the copyright in it is owned by Irish Rail. This drawing must not be either loaned, copied or otherwise reproduced in whole or in part or used for any purpose without the prior permission of Irish Rail.
© Ordnance Survey Ireland and government of Ireland. All O.S. Data used for plans are printed under: "Copyright Ordnance Survey Ireland" Survey No. 0039722. (OSI Aerial Data or OSI Lidar Data) & Survey No. 2022/OSI NMA 180 (OSI Vector Data).
All elevations are in metres and relate to OSI Geoid Model (OSGM02) Malin Head as defined by existing Project Control. All Co-ordinates are in Irish Transverse Mercator Grid (ITM) as defined by OSI active GPS station Tallaght College (TLLG).



Rialtas
na hÉireann
Government
of Ireland

Tionscadal Éireann
Project Ireland
2040

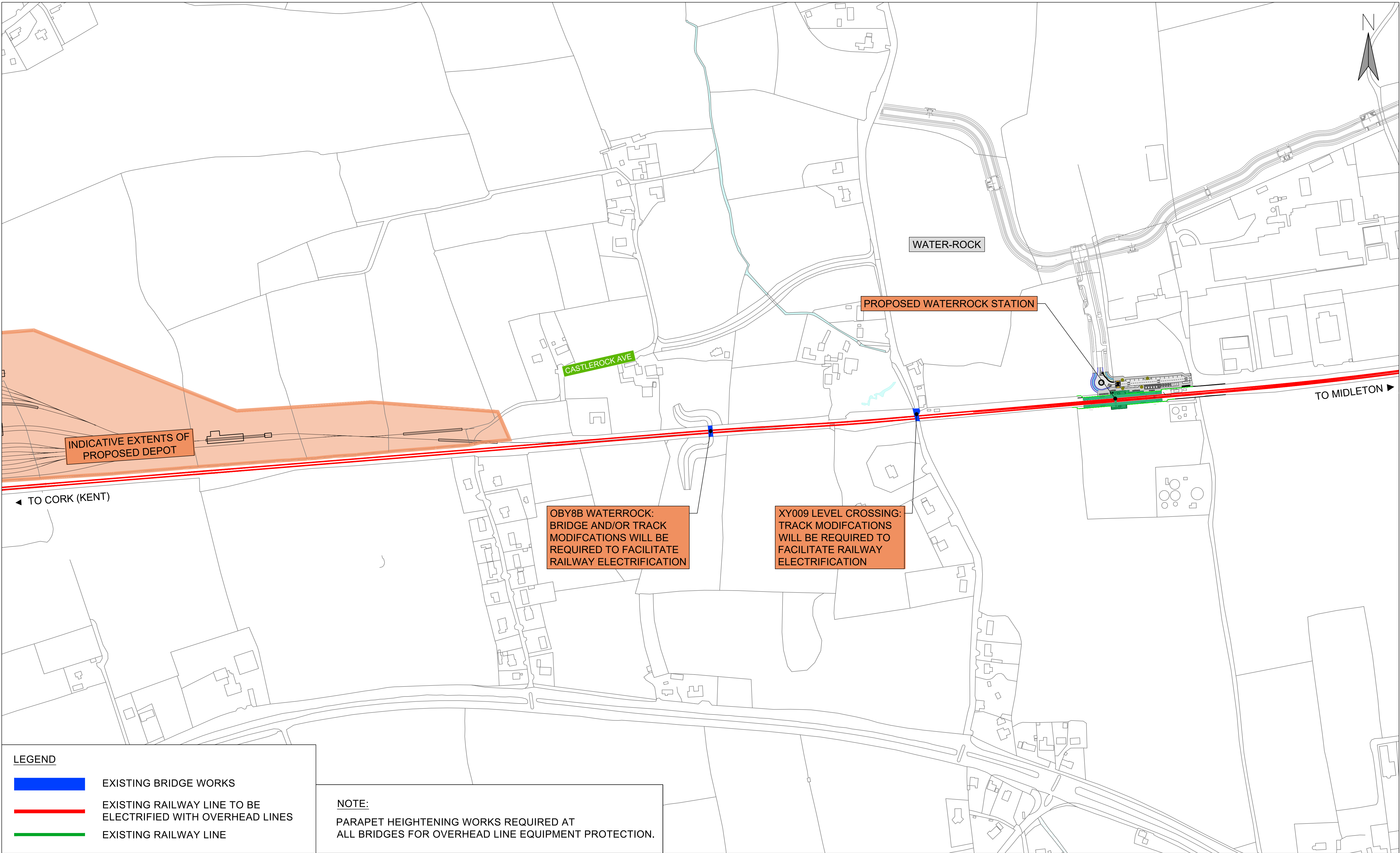


NTA
Gáiríocht Náisiúnta Iomparáil
National Transport Authority



Project Title:
CORK AREA COMMUTER RAIL PROGRAMME
(Main Works)

Figure Number:
FIGURE 015



© Irish Rail (2022). This drawing is confidential and the copyright in it is owned by Irish Rail. This drawing must not be either loaned, copied or otherwise reproduced in whole or in part or used for any purpose without the prior permission of Irish Rail.
© Ordnance Survey Ireland and government of Ireland. All O.S. Data used for plans are printed under: "Copyright Ordnance Survey Ireland" Survey No. 0039722. (OSi Aerial Data or OSi Lidar Data) & Survey No. 2022/OSi_NMA_180 (OSi Vector Data).
All elevations are in metres and relate to OSi Geoid Model (OSGM02) Malin Head as defined by existing Project Control.
All Co-ordinates are in Irish Transverse Mercator Grid (ITM) as defined by OSi active GPS station Tallaght College (TLLG).



Project Title: CORK AREA COMMUTER RAIL PROGRAMME (Main Works)

Figure Number: FIGURE 016

