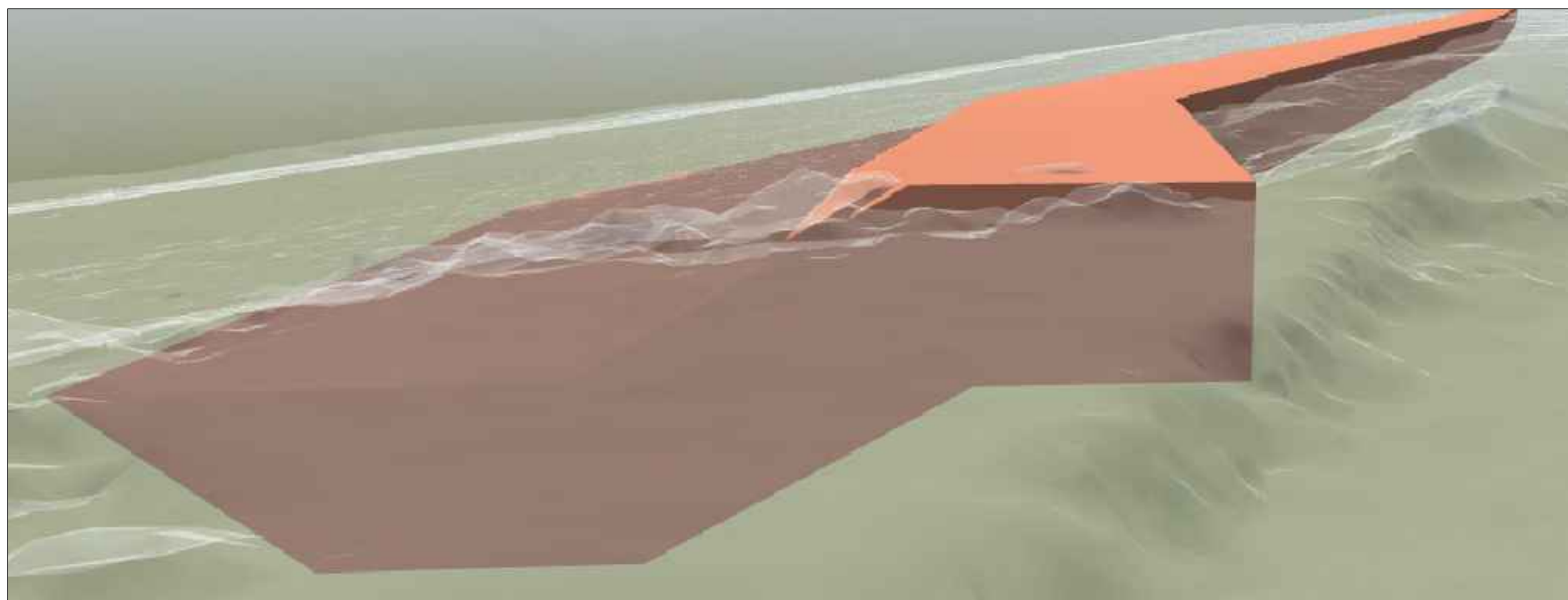


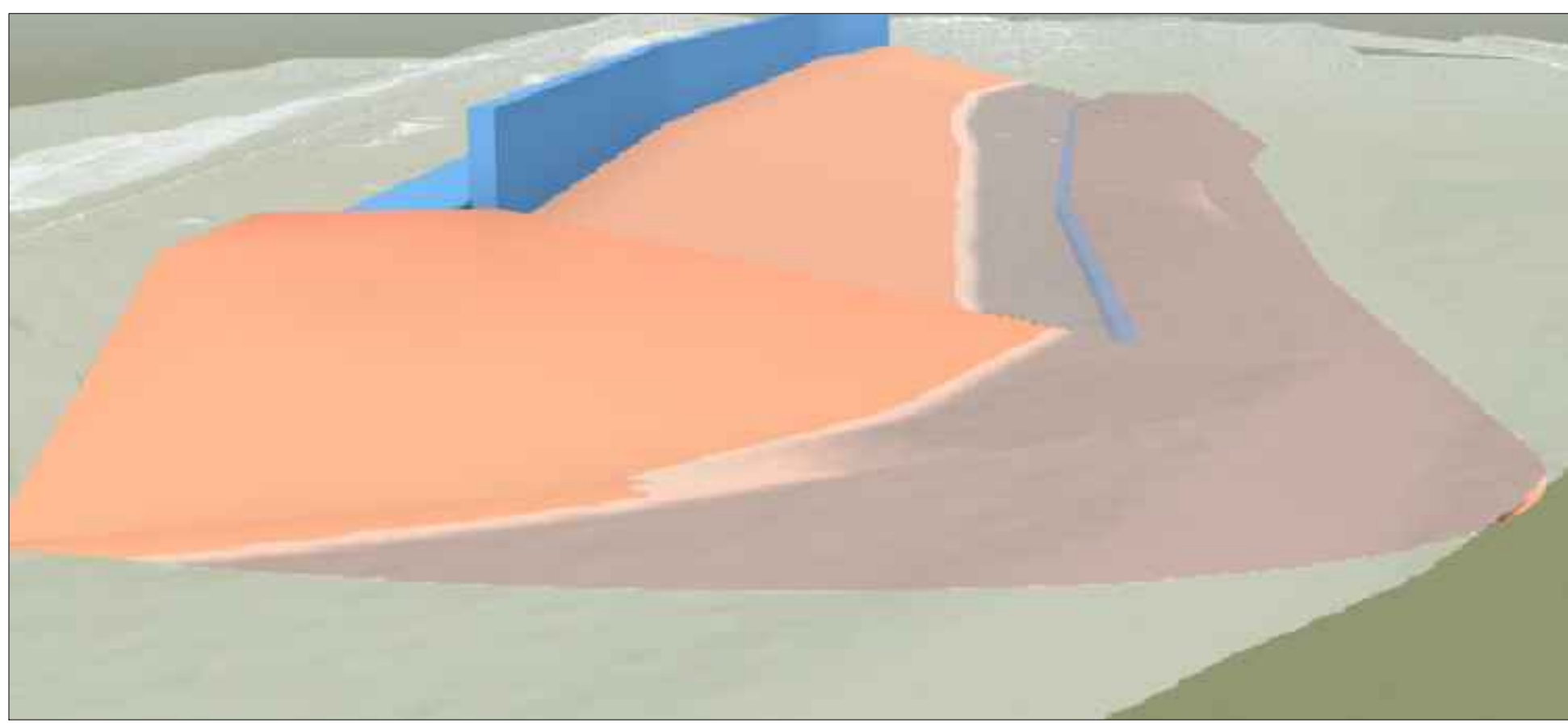
CCA6.1-D1 - TYPICAL CROSS SECTION ROCK REVETMENT

Scale 1:100



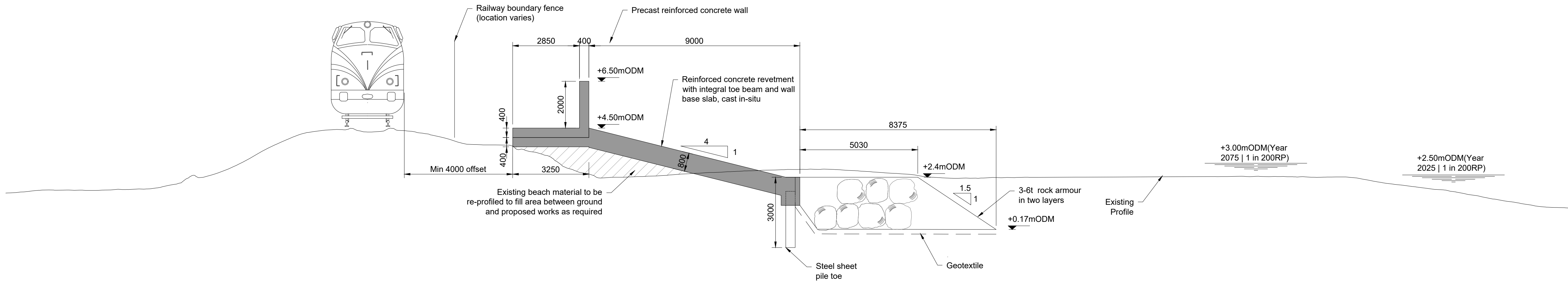
CCA6.1-D1 - TYPICAL 3D VISUAL OF ROCK REVETMENT LOOKING SOUTH

NTS



CCA6.1-D5 - TYPICAL 3D VISUAL OF ROCK REVETMENT LOOKING NORTH

NTS



CCA6.1-D5 - TYPICAL CROSS SECTION CONCRETE REVETMENT WITH ROCK TOE PROTECTION

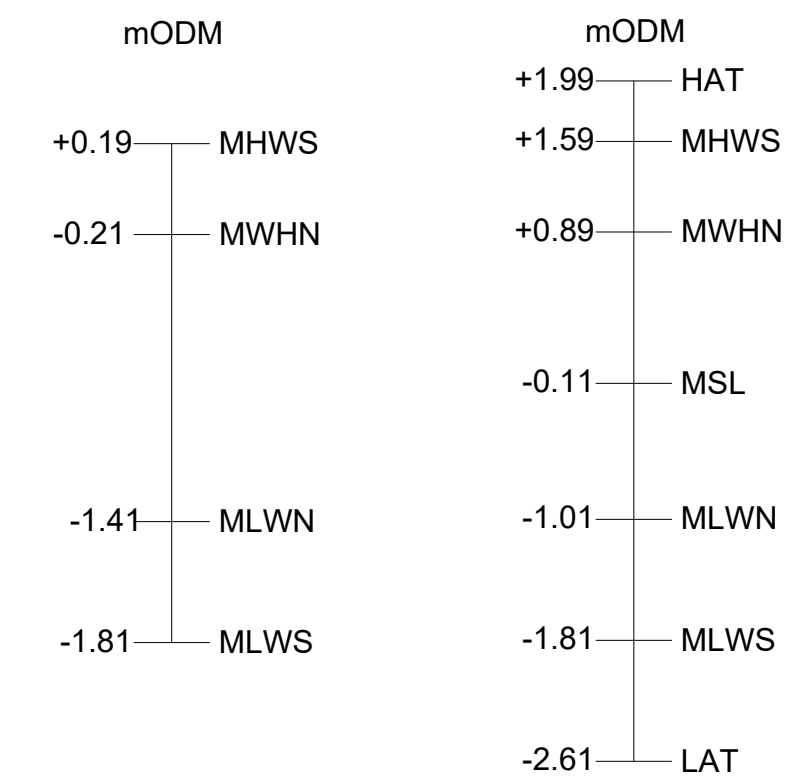
Scale 1:100

NOTES

- All levels are in mODM
- Do not scale from this drawing.
- Additional tide conversions are available for high and low water (spring and neap tides) at Secondary Ports of Dublin Bar, Dun Laoghaire, Greystones (high only) and Wicklow. High tides at CCA6 are typically 1.2m lower than at Dublin.
- All levels and dimensions are approximate and to be confirmed through design development.
- For cross section locations refer to drawing 7694-CCA6\_1-P3-DWG-CV-JAC-0100.
- Existing ground profile is extracted from ECRIPP UAV survey data and varies along each typical cross-section.
- Water levels shown on the section represent the modelled extreme water level in a 0.5% AEP (Annual Exceedance Probability) event, also known as the 1 in 200 year return period storm. One water level represents current sea levels and the second represents sea levels inclusive of a sea level rise allowance to 2075.

LEGEND

- New Reinforced Concrete
- Geotextile



TIDE BAR  
WICKLOW HARBOUR  
(STANDARD PORT)

TIDE BAR  
DUBLIN NORTH WALL  
(STANDARD PORT)

B	21/07/2025	FINAL FOLLOWING CLIENT COMMENTS	EJ	JS	JD	DK
A	06/06/2025	For Client Review and Comment	RM	OR	JD	DK
Rev	Rev. Date	Purpose of revision	Drawn	Checked	Rev'd	Appr'd

Client

Iarnród Éireann  
Irish Rail

Designer:

Jacobs  
Termini Building, 2nd Floor, 3 Arkle Road, Sandycroft  
Dublin, D18 C9C5, Ireland. Tel: +353 (0)1 269 5666  
www.jacobs.com

Project

ECRIPP  
Environmental Criticality Risk and Priority Programme

Drawing title

KILCOOLE TO NEWCASTLE CCA6.1  
PHASE 3 DESIGN  
GENERAL ARRANGEMENT  
CROSS SECTIONS 1 OF 4

Drawing status	Issue for Acceptance				
State Code	Contract / Work Package 6.1				
Project Stage	Preliminary Design				
Scale	1:50	DO NOT SCALE			
Jacobs No.	D3658300	Rev B			
Client no.	7694				
Drawing number	7694- CCA6_1 -P3 -				
Project No	Work Package	Phase			
Type	Discipline	Originator	Number		
DWG - CV	- JAC	-	- 0300		

