



LEGEND

NEW STATION

EXISTING STATION

UPGRADED STATION

NEW DEPOT

CLOSURE OF LEVEL CROSSING

PARK & RIDE

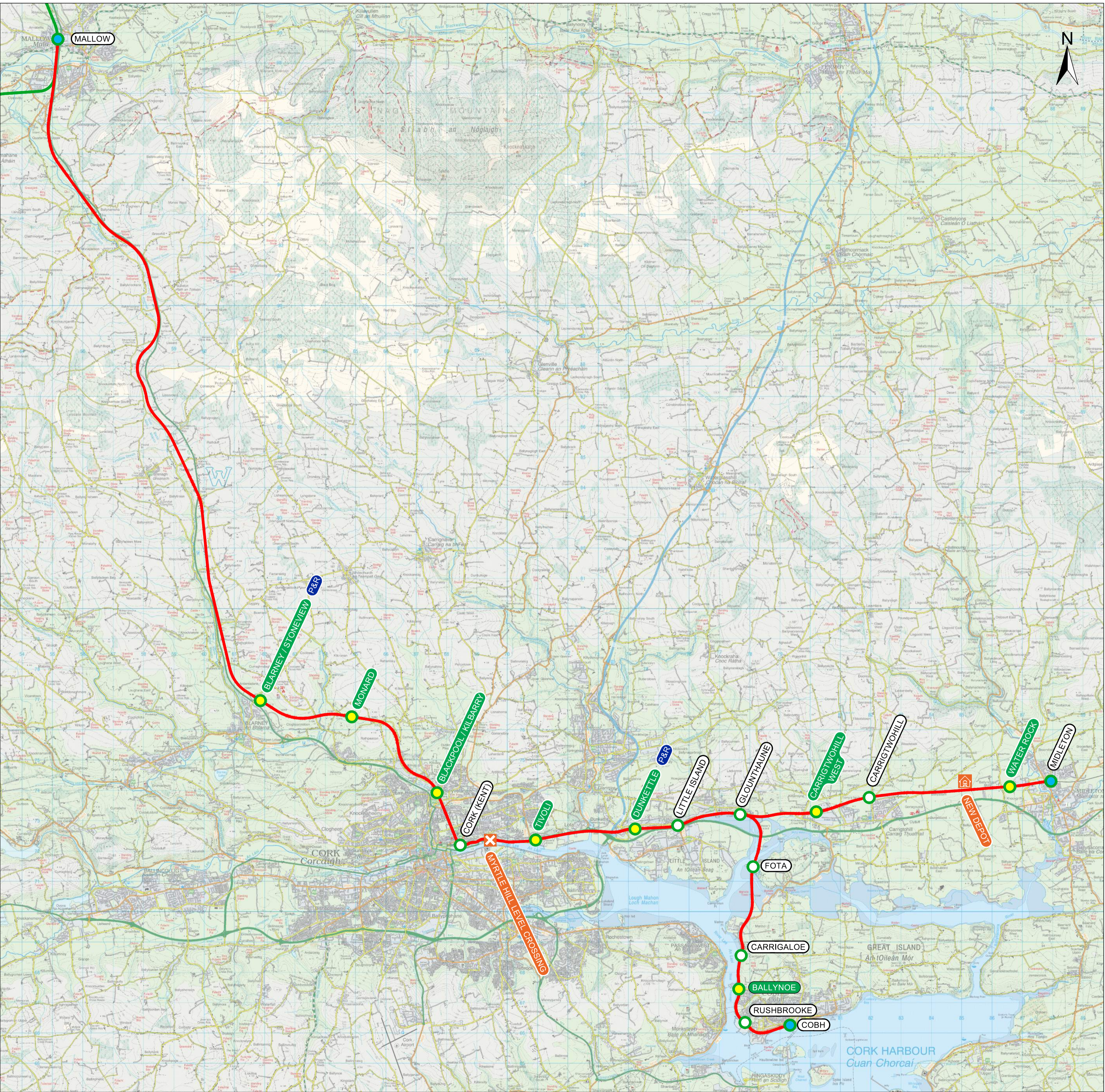
EXISTING RAILWAY LINE

EXISTING RAILWAY LINE TO BE ELECTRIFIED WITH OVERHEAD LINES

© Irish Rail (2022). This drawing is confidential and the copyright in it is owned by Irish Rail. This drawing must not be either loaned, copied or otherwise reproduced in whole or in part or used for any purpose without the prior permission of Irish Rail.

© Ordnance Survey Ireland and government of Ireland. All O.S. Data used for plans are printed under: "Copyright Ordnance Survey Ireland" Survey No. 0039722. (OSI Aerial Data or OSI Lidar Data) & Survey No. 2022/OSI\_NMA\_180 (OSI Vector Data).

All elevations are in metres and relate to OSI Geoid Model (OSGM02) Malin Head as defined by existing Project Control. All Co-ordinates are in Irish Transverse Mercator Grid (ITM) as defined by OSI active GPS station Tallaght College (TLLG).



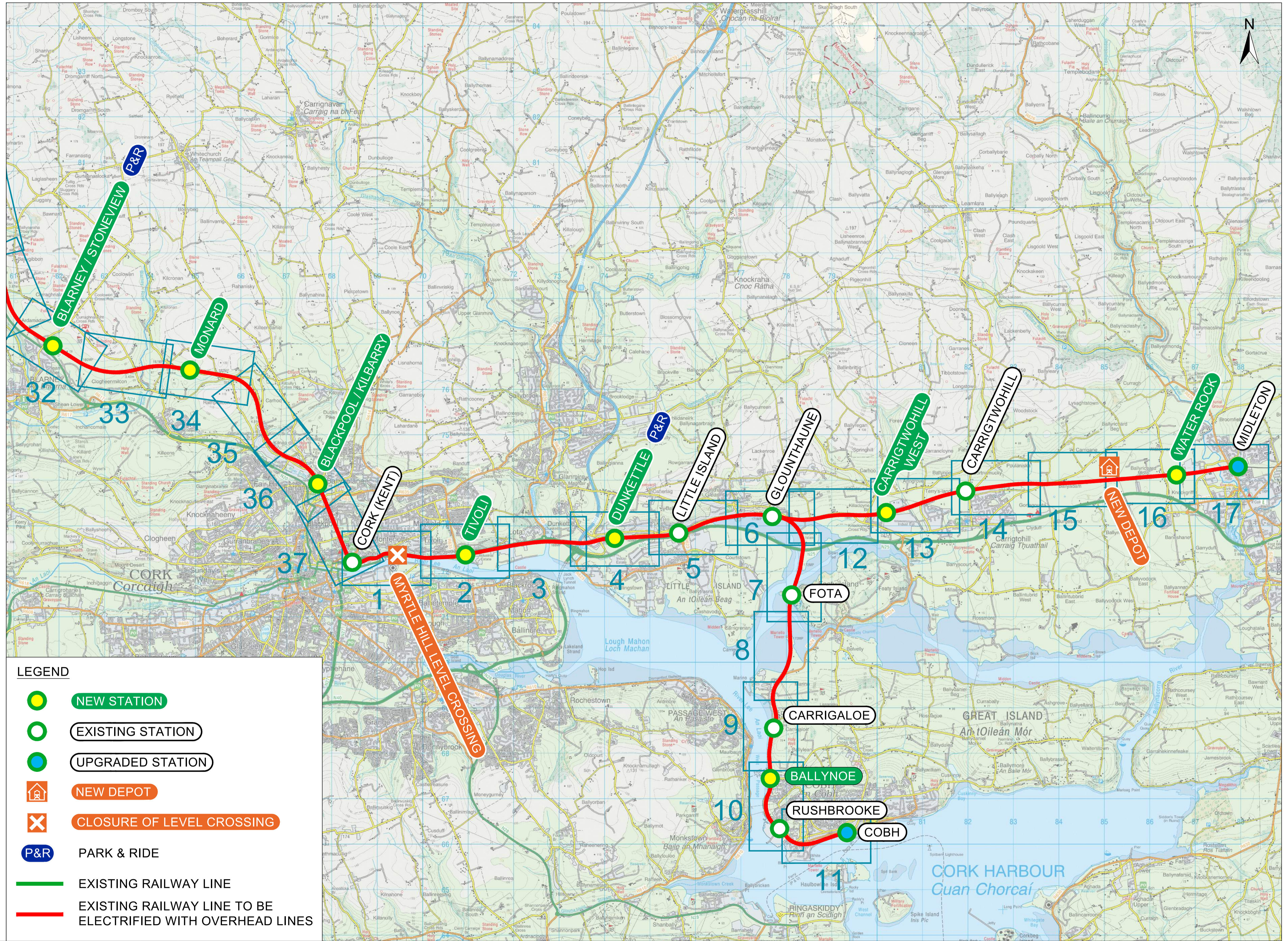
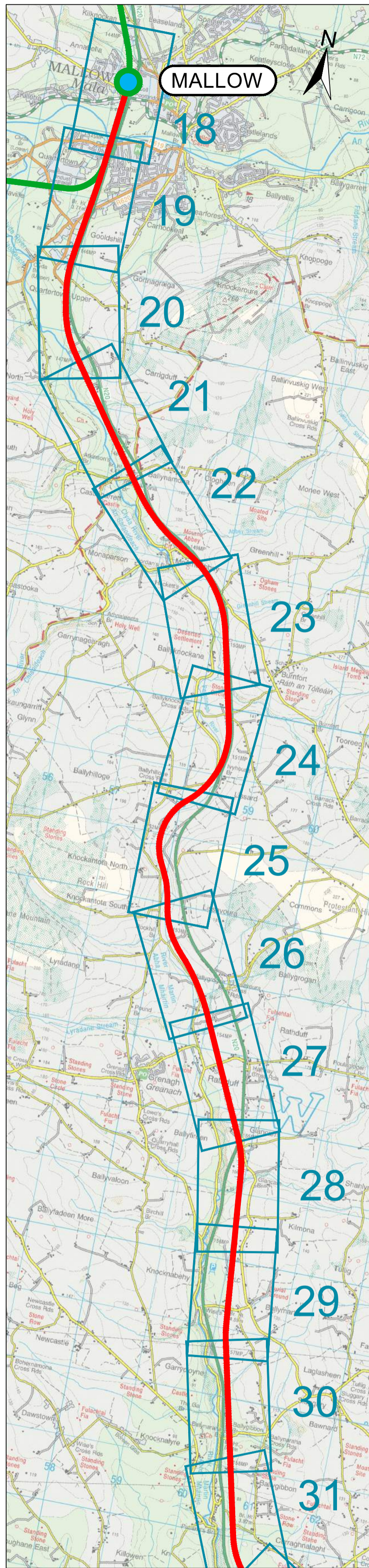
Rialtas na hÉireann  
Government of Ireland

Tionscadal Éireann  
Project Ireland  
2040

Iarnród Éireann  
Irish Rail

Project Title:  
CORK AREA COMMUTER RAIL PROGRAMME  
(Main Works)

Figure Number:  
LOCATION PLAN



**LEGEND**

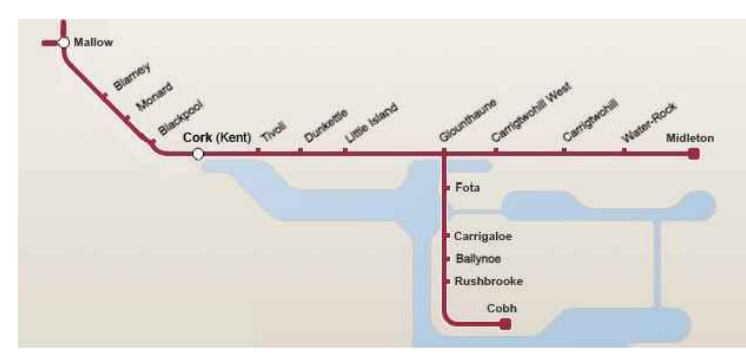
- NEW STATION**
- EXISTING STATION**
- UPGRADED STATION**
- NEW DEPOT**
- CLOSURE OF LEVEL CROSSING**
- PARK & RIDE**
- EXISTING RAILWAY LINE**
- EXISTING RAILWAY LINE TO BE ELECTRIFIED WITH OVERHEAD LINES**

© Irish Rail (2022). This drawing is confidential and the copyright in it is owned by Irish Rail. This drawing must not be either loaned, copied or otherwise reproduced in whole or in part or used for any purpose without the prior permission of Irish Rail.

© Ordnance Survey Ireland and government of Ireland. All O.S. Data used for plans are printed under "Copyright Ordnance Survey Ireland" Survey No. 0039722 (OSI Aerial Data or OSI Lidar Data) & Survey No. 2022/OSI NMA 180 (OSI Vector Data).

All elevations are in metres and relate to OSI Geoid Model (OSGM02) Malin Head as defined by existing Project Control.

All Co-ordinates are in Irish Transverse Mercator Grid (ITM) as defined by OSI active GPS station Tallaght College (TLLG).



Rialtas na hÉireann  
Government of Ireland

Tionscadal Éireann  
Project Ireland  
2040

CIE

NTA  
National Transport Authority

Iarnród Éireann  
Irish Rail

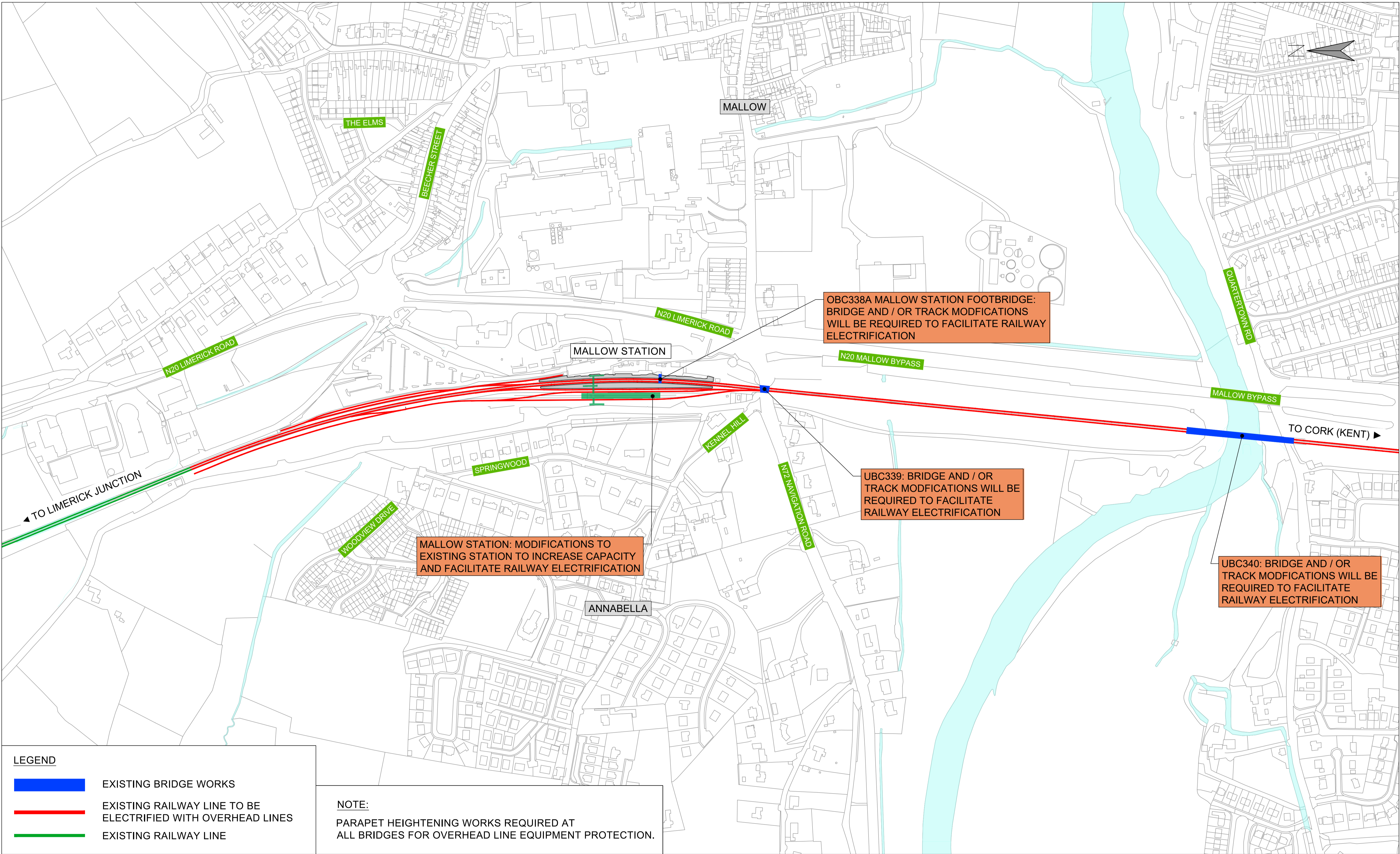
TUC RAIL

TYPSA

FIROD  
FOURN & O'DONOVAN

Project Title:  
**CORK AREA COMMUTER RAIL PROGRAMME  
(Main Works)**

Figure Number:  
**KEY PLAN**



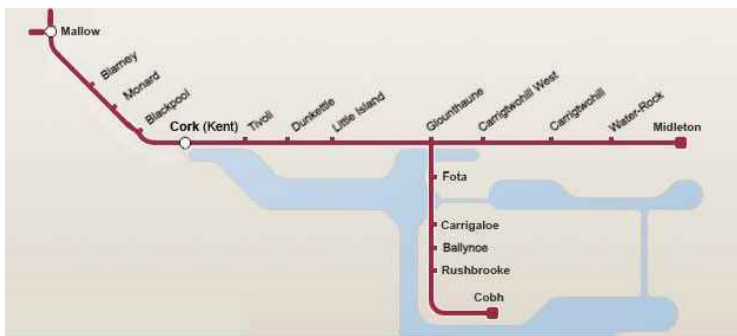
LEGEND

- EXISTING BRIDGE WORKS
- EXISTING RAILWAY LINE TO BE ELECTRIFIED WITH OVERHEAD LINES
- EXISTING RAILWAY LINE

NOTE:

PARAPET HEIGHTENING WORKS REQUIRED AT ALL BRIDGES FOR OVERHEAD LINE EQUIPMENT PROTECTION.

© Irish Rail (2022). This drawing is confidential and the copyright in it is owned by Irish Rail. This drawing must not be either loaned, copied or otherwise reproduced in whole or in part or used for any purpose without the prior permission of Irish Rail.  
© Ordnance Survey Ireland and government of Ireland. All O.S. Data used for plans are printed under: "Copyright Ordnance Survey Ireland" Survey No. 0039722. (OSI Aerial Data or OSI Lidar Data) & Survey No. 2022/OSI\_NMA\_180 (OSI Vector Data).  
All elevations are in metres and relate to OSI Geoid Model (OSGM02) Malin Head as defined by existing Project Control.  
All Co-ordinates are in Irish Transverse Mercator Grid (ITM) as defined by OSI active GPS station Tallaght College (TLLG).



Rialtas  
na hÉireann  
Government  
of Ireland

Tionscadal Éireann  
Project Ireland  
2040

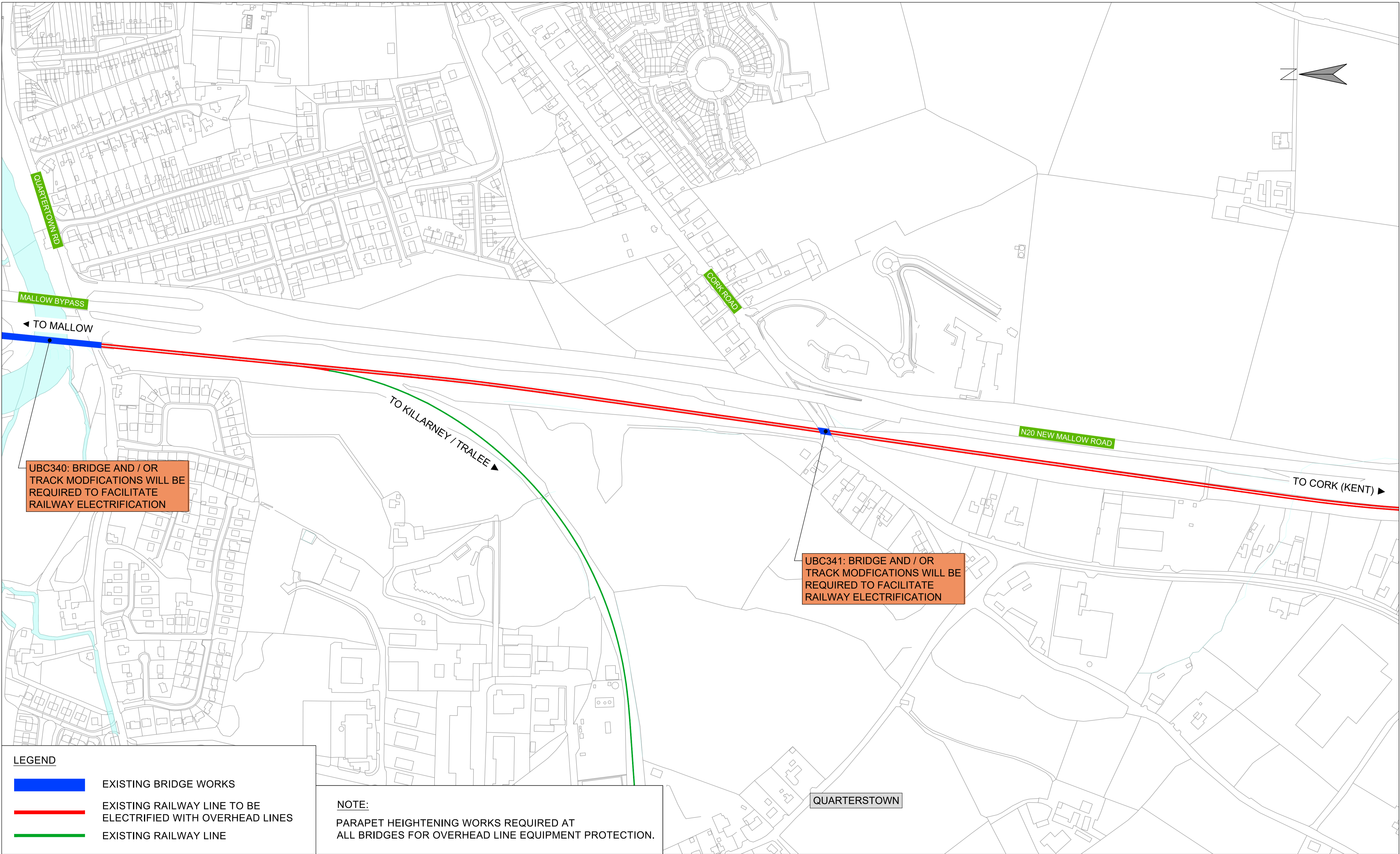


NTA  
Gairíocht Náisiúnta  
Sábháilteacht



Project Title:  
CORK AREA COMMUTER RAIL PROGRAMME  
(Main Works)

Figure Number:  
FIGURE 018



© Irish Rail (2022). This drawing is confidential and the copyright in it is owned by Irish Rail. This drawing must not be either loaned, copied or otherwise reproduced in whole or in part or used for any purpose without the prior permission of Irish Rail.

© Ordnance Survey Ireland and government of Ireland. All O.S. Data used for plans are printed under: "Copyright Ordnance Survey Ireland" Survey No. 0039722 (OSI Aerial Data or OSI Lidar Data) & Survey No. 2022/OSI\_NMA\_180 (OSI Vector Data).

All elevations are in metres and relate to OSI Geoid Model (OSGM02) Malin Head as defined by existing Project Control.

All Co-ordinates are in Irish Transverse Mercator Grid (ITM) as defined by OSI active GPS station Tallaght College (TLLG).



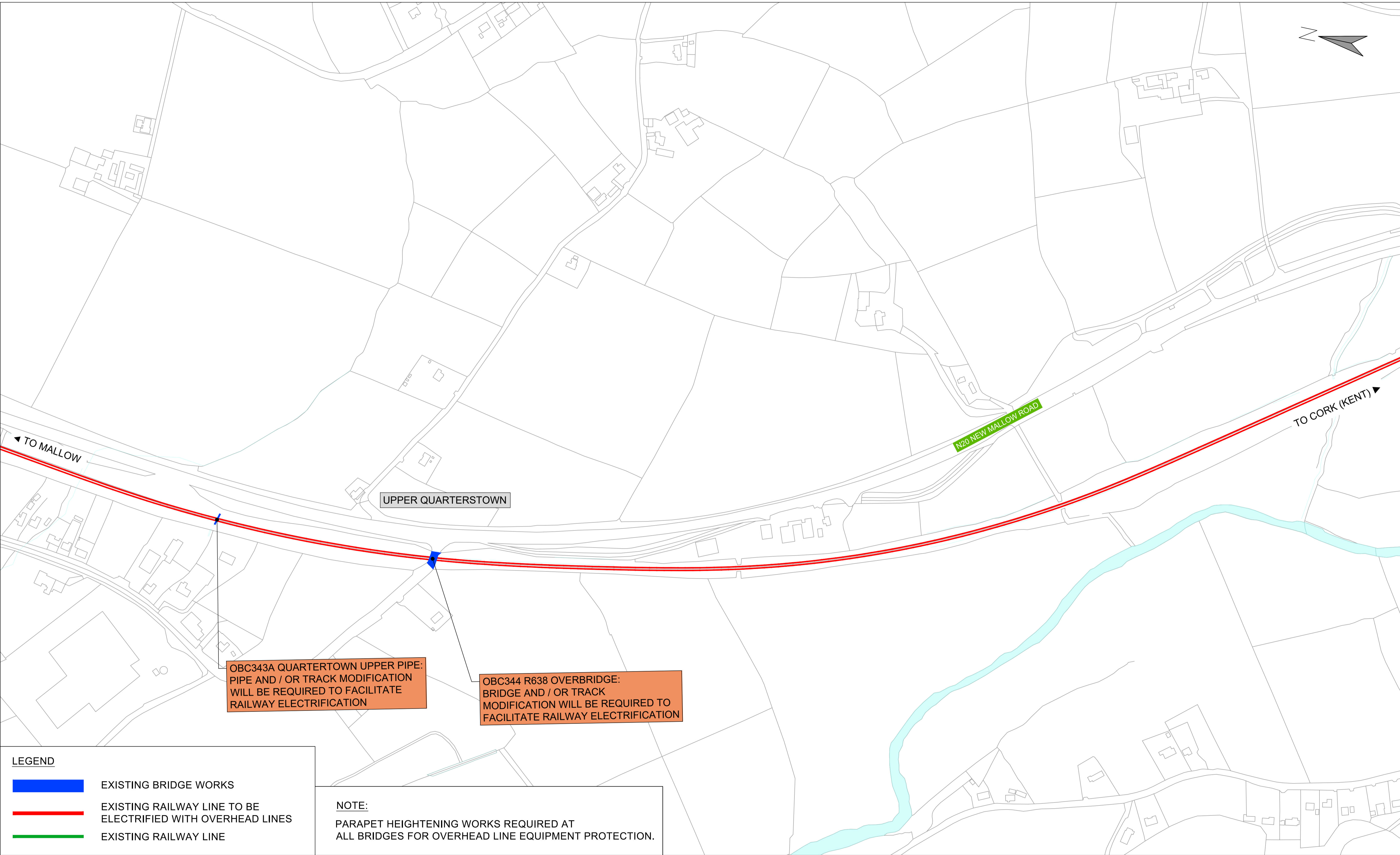
Rialtas  
na hÉireann  
Government  
of Ireland

Tionscadal Éireann  
Project Ireland  
2040



Project Title:  
CORK AREA COMMUTER RAIL PROGRAMME  
(Main Works)

Figure Number:  
FIGURE 019



© Irish Rail (2022). This drawing is confidential and the copyright in it is owned by Irish Rail. This drawing must not be either loaned, copied or otherwise reproduced in whole or in part or used for any purpose without the prior permission of Irish Rail.

© Ordnance Survey Ireland and government of Ireland. All O.S. Data used for plans are printed under: "Copyright Ordnance Survey Ireland" Survey No. 0039722. (OSi Aerial Data or OSi Lidar Data) & Survey No. 2022/OSi\_NMA\_180 (OSi Vector Data).

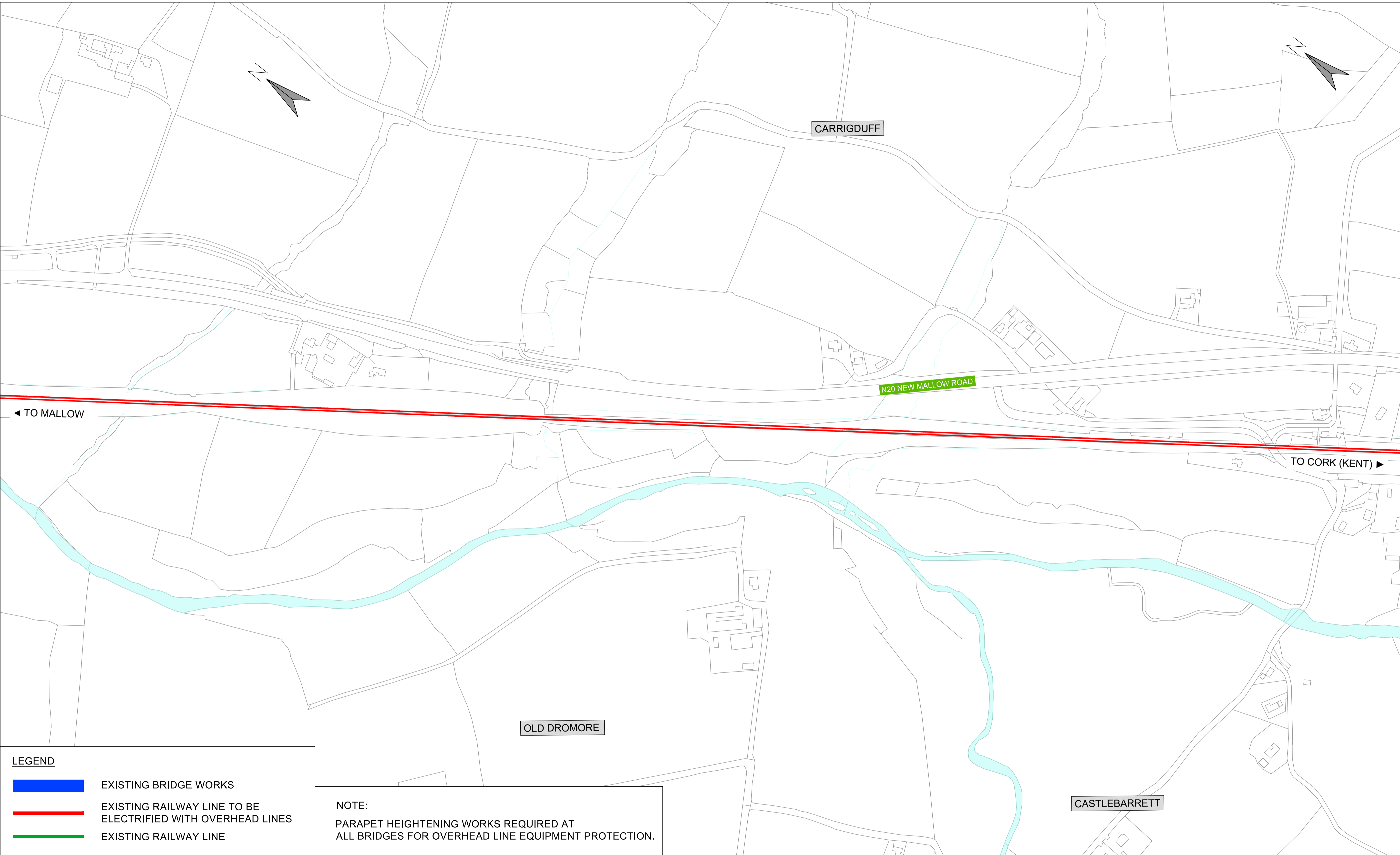
All elevations are in metres and relate to OSi Geoid Model (OSGM02) Malin Head as defined by existing Project Control.

All Co-ordinates are in Irish Transverse Mercator Grid (ITM) as defined by OSi active GPS station Tallaght College (TLLG).



Project Title:  
CORK AREA COMMUTER RAIL PROGRAMME  
(Main Works)

Figure Number:  
FIGURE 020



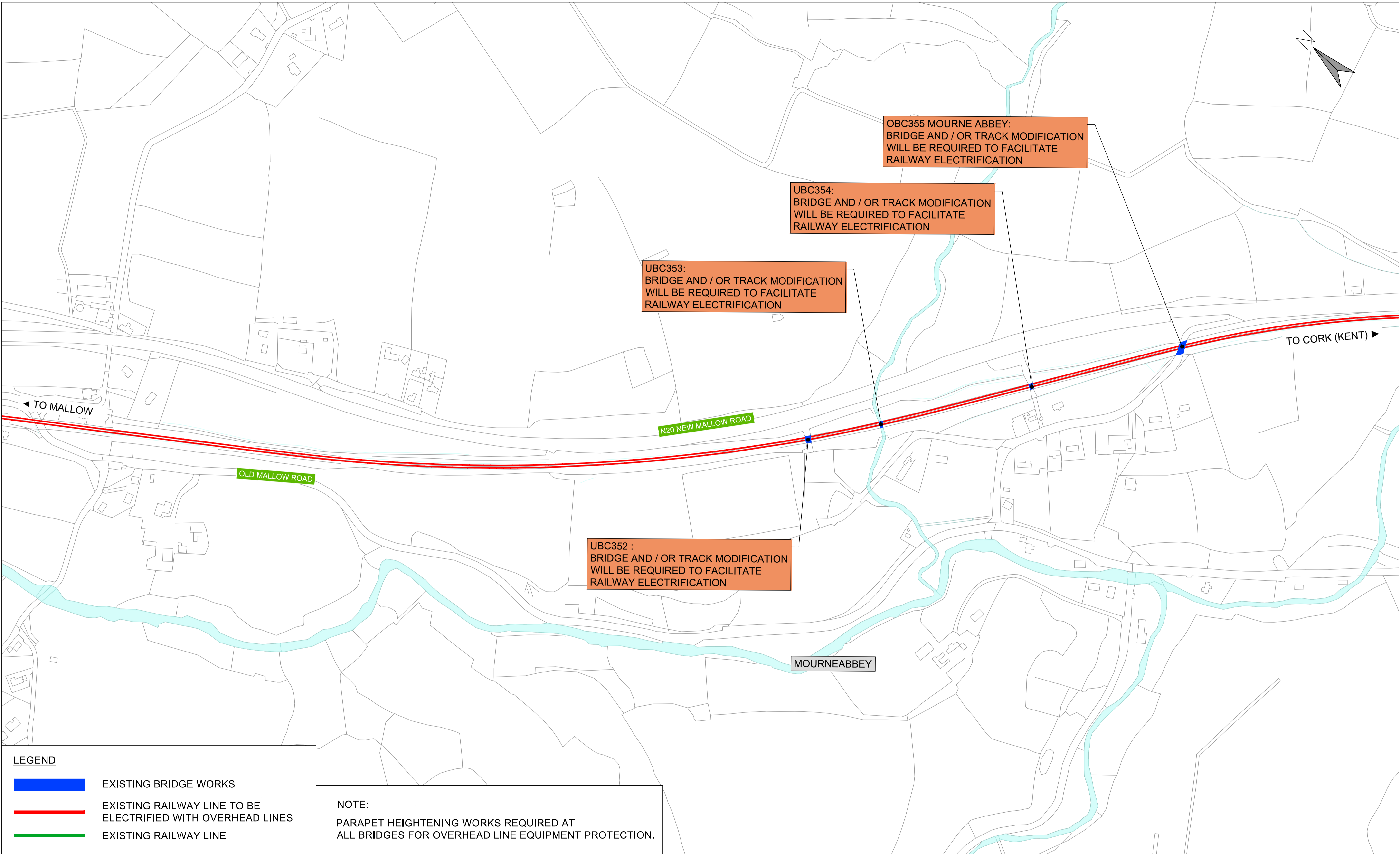
**LEGEND**

EXISTING BRIDGE WORKS

EXISTING RAILWAY LINE TO BE ELECTRIFIED WITH OVERHEAD LINES

EXISTING RAILWAY LINE

**NOTE:**  
PARAPET HEIGHTENING WORKS REQUIRED AT ALL BRIDGES FOR OVERHEAD LINE EQUIPMENT PROTECTION.



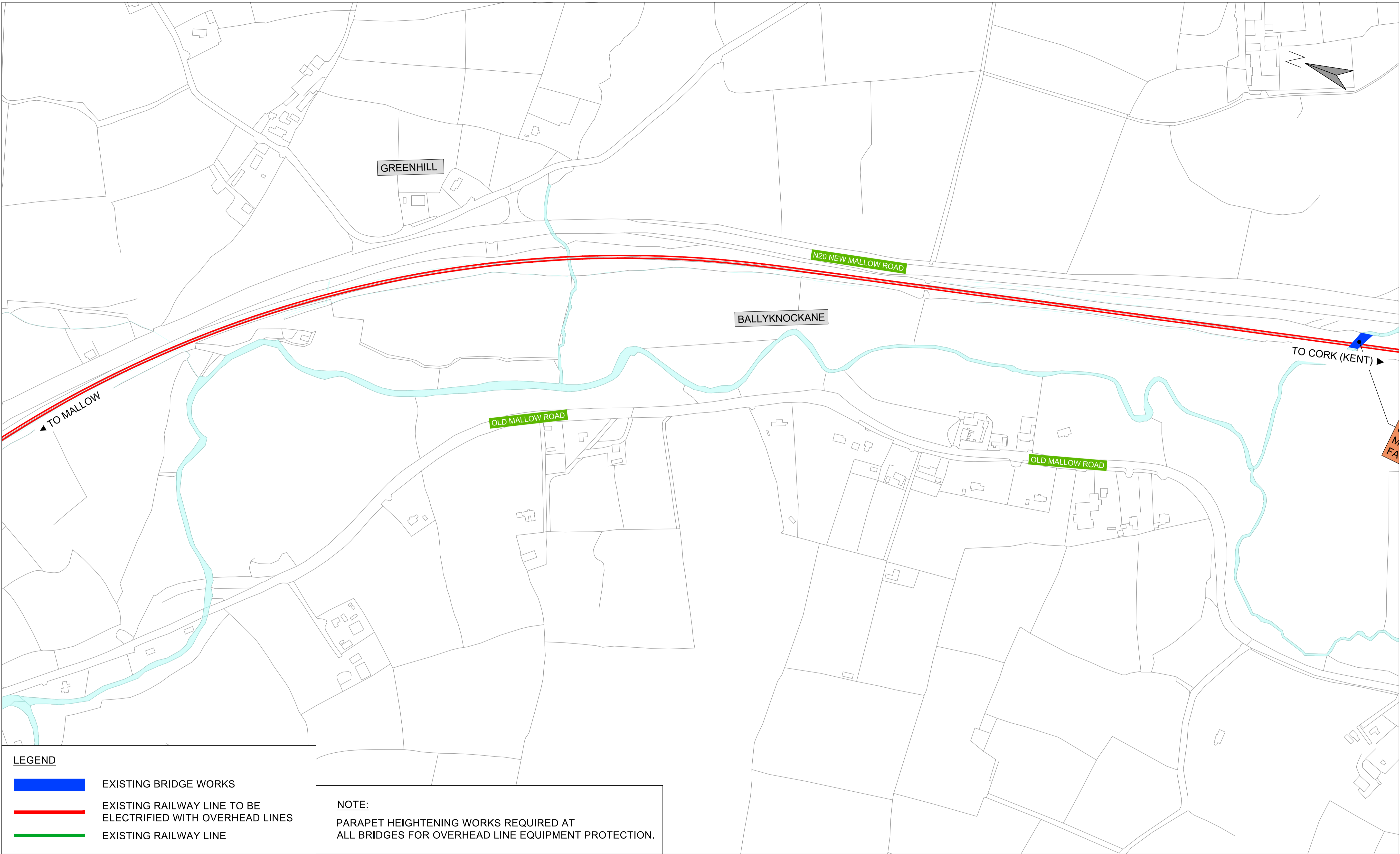
**LEGEND**

EXISTING BRIDGE WORKS

EXISTING RAILWAY LINE TO BE ELECTRIFIED WITH OVERHEAD LINES

EXISTING RAILWAY LINE

**NOTE:**  
PARAPET HEIGHTENING WORKS REQUIRED AT ALL BRIDGES FOR OVERHEAD LINE EQUIPMENT PROTECTION.

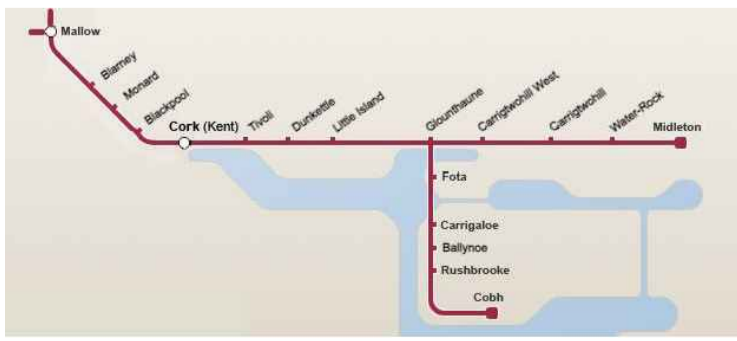


LEGEND

- EXISTING BRIDGE WORKS
- EXISTING RAILWAY LINE TO BE ELECTRIFIED WITH OVERHEAD LINES
- EXISTING RAILWAY LINE

NOTE:  
PARAPET HEIGHTENING WORKS REQUIRED AT ALL BRIDGES FOR OVERHEAD LINE EQUIPMENT PROTECTION.

© Irish Rail (2022). This drawing is confidential and the copyright in it is owned by Irish Rail. This drawing must not be either loaned, copied or otherwise reproduced in whole or in part or used for any purpose without the prior permission of Irish Rail.  
© Ordnance Survey Ireland and government of Ireland. All O.S. Data used for plans are printed under: "Copyright Ordnance Survey Ireland" Survey No. 0039722. (OSi Aerial Data or OSi Lidar Data) & Survey No. 2022/OSi NMA 180 (OSi Vector Data).  
All elevations are in metres and relate to OSi Geoid Model (OSGM02) Malin Head as defined by existing Project Control.  
All Co-ordinates are in Irish Transverse Mercator Grid (ITM) as defined by OSi active GPS station Tallaght College (TLLG).



Rialtas  
na hÉireann  
Government  
of Ireland

Tionscadal Éireann  
Project Ireland  
2040

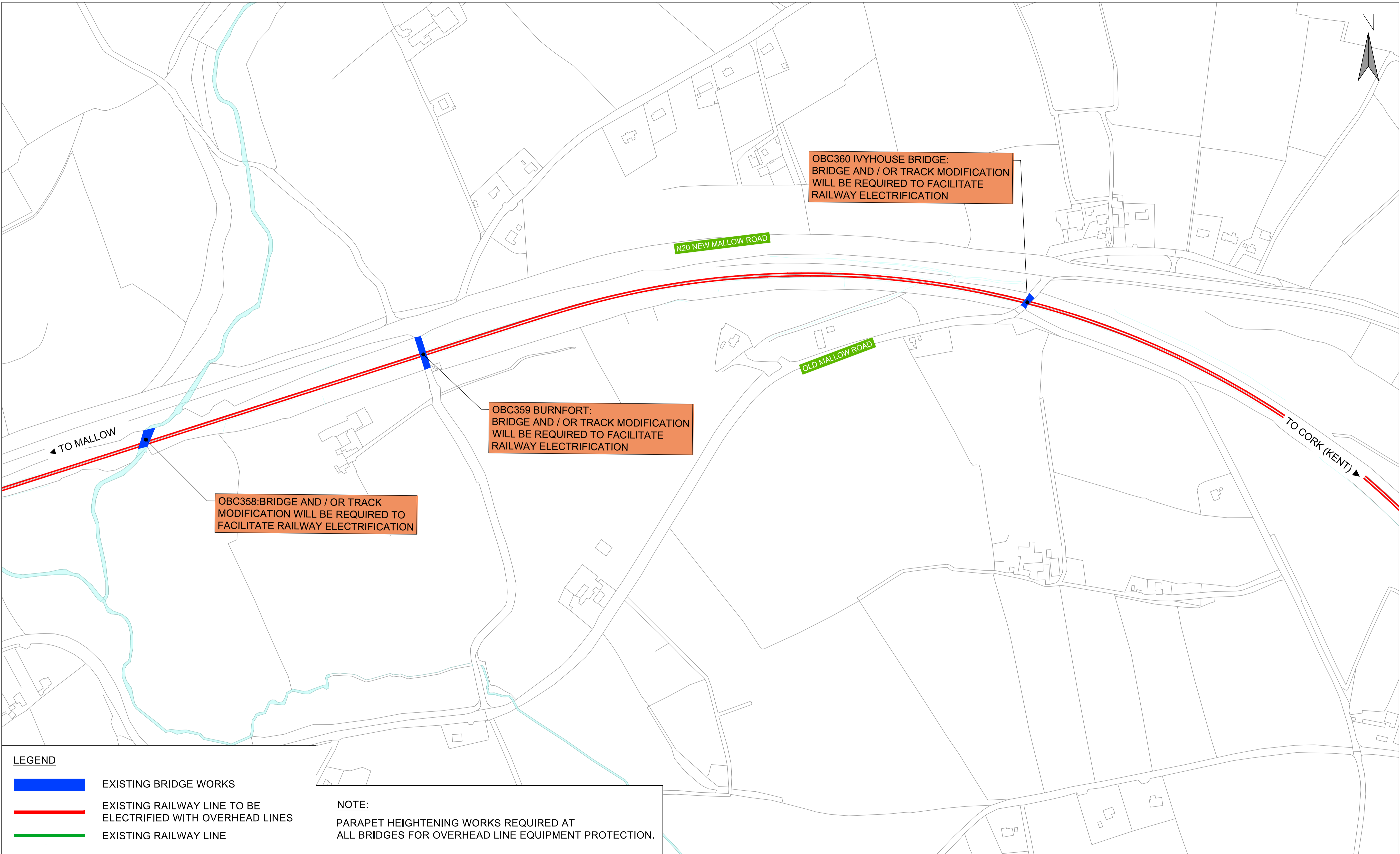


NTA  
Gairíocht Náisiúnta Iomparáil  
National Transport Authority



Project Title:  
CORK AREA COMMUTER RAIL PROGRAMME  
(Main Works)

Figure Number:  
FIGURE 023



© Irish Rail (2022). This drawing is confidential and the copyright in it is owned by Irish Rail. This drawing must not be either loaned, copied or otherwise reproduced in whole or in part or used for any purpose without the prior permission of Irish Rail.

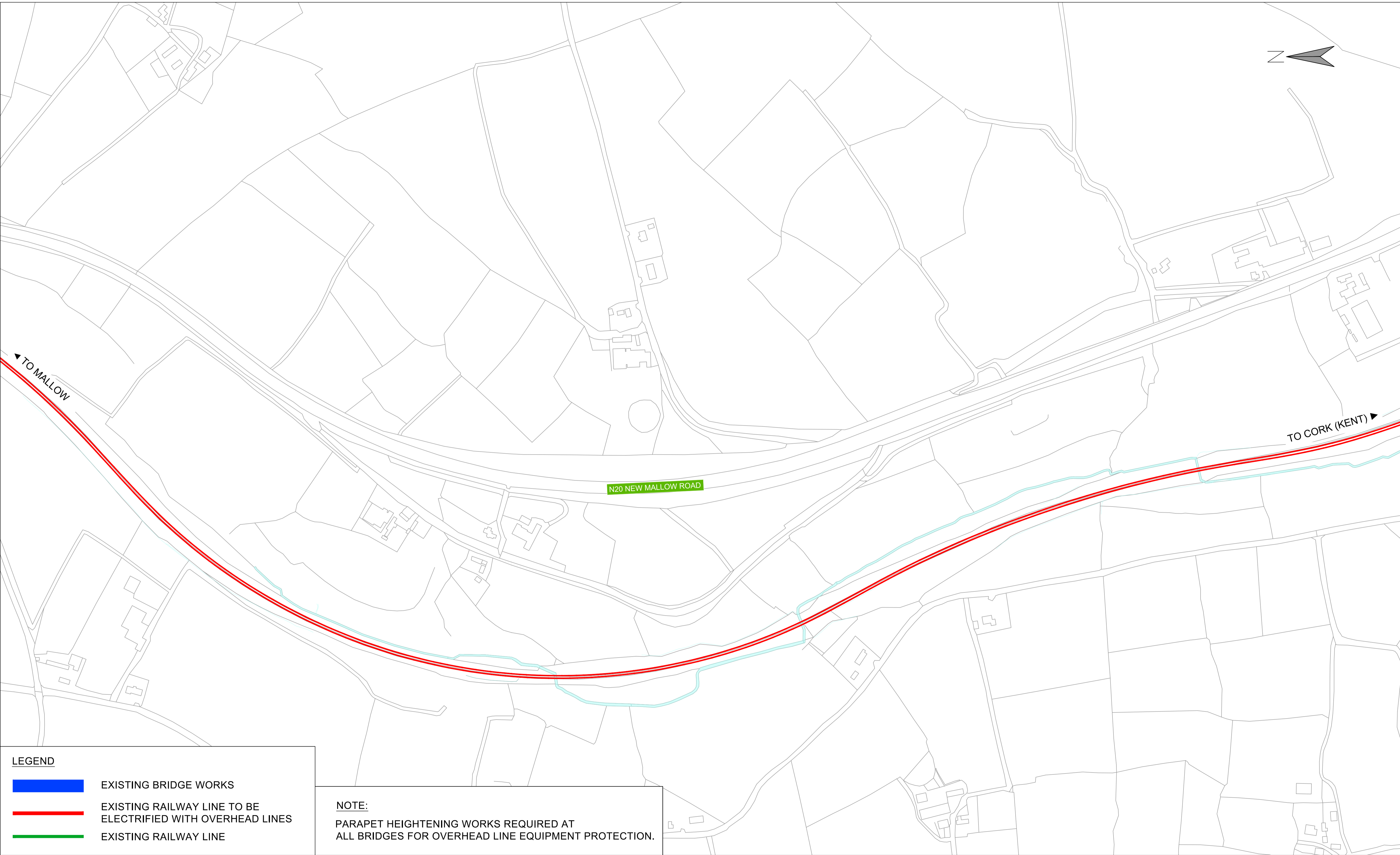
© Ordnance Survey Ireland and government of Ireland. All O.S. Data used for plans are printed under: "Copyright Ordnance Survey Ireland" Survey No. 0039722. (OSi Aerial Data or OSi Lidar Data) & Survey No. 2022/OSi\_NMA\_180 (OSi Vector Data).

All elevations are in metres and relate to OSi Geoid Model (OSGM02) Malin Head as defined by existing Project Control. All Co-ordinates are in Irish Transverse Mercator Grid (ITM) as defined by OSi active GPS station Tallaght College (TLLG).



Project Title: CORK AREA COMMUTER RAIL PROGRAMME (Main Works)

Figure Number: FIGURE 024

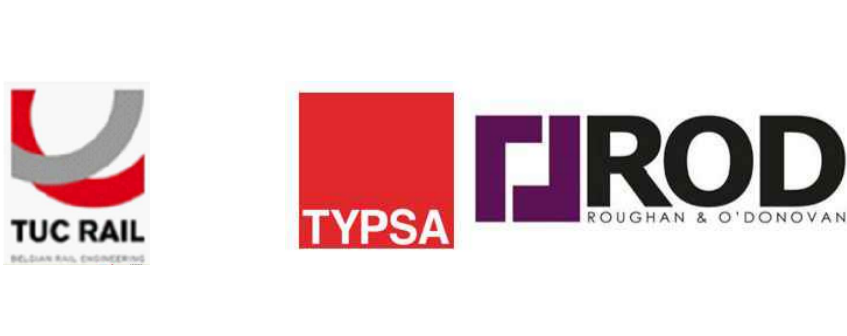


© Irish Rail (2022). This drawing is confidential and the copyright in it is owned by Irish Rail. This drawing must not be either loaned, copied or otherwise reproduced in whole or in part or used for any purpose without the prior permission of Irish Rail.

© Ordnance Survey Ireland and government of Ireland. All O.S. Data used for plans are printed under: "Copyright Ordnance Survey Ireland" Survey No. 0039722. (OSi Aerial Data or OSi Lidar Data) & Survey No. 2022/OSi\_NMA\_180 (OSi Vector Data).

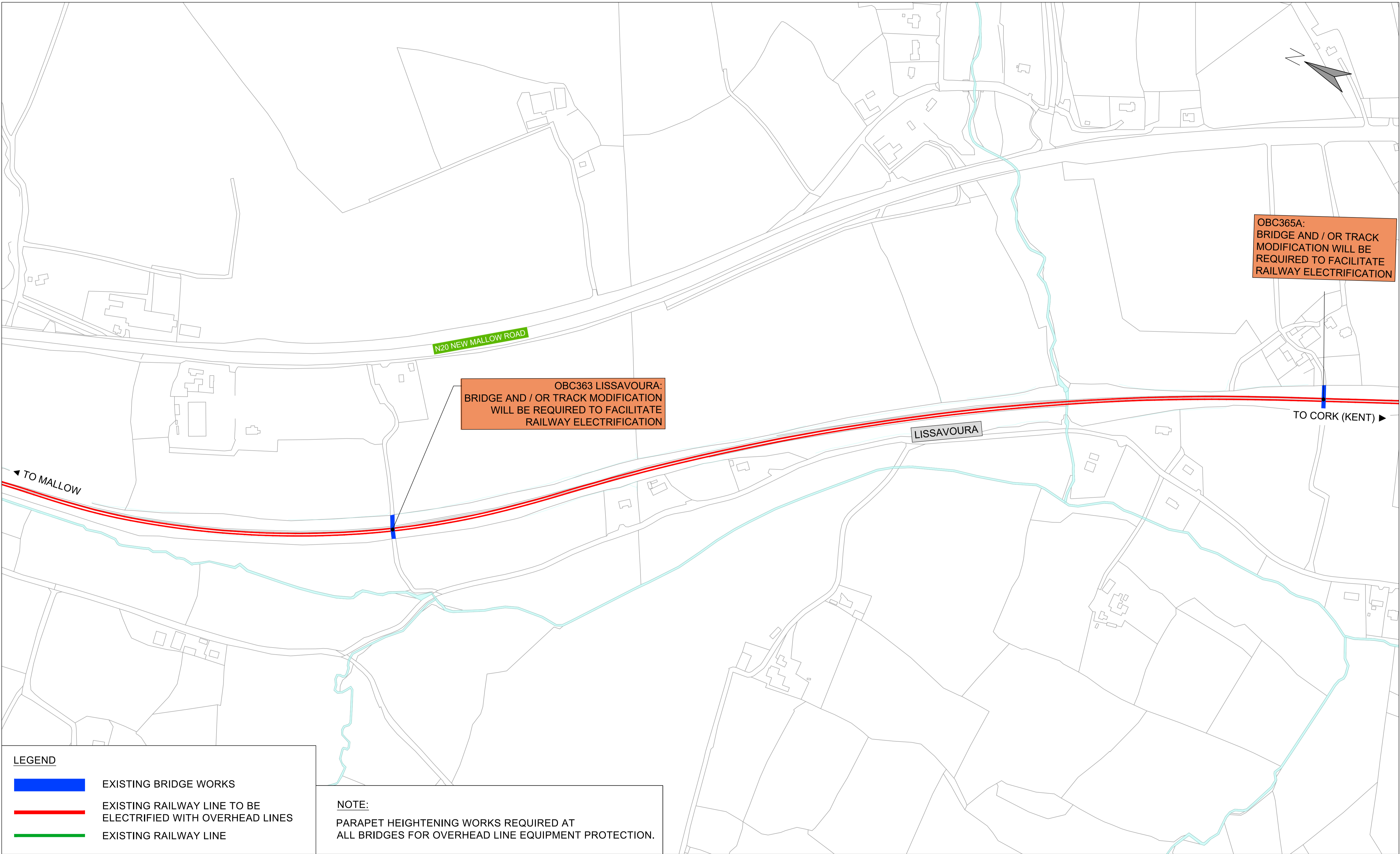
All elevations are in metres and relate to OSi Geoid Model (OSGM02) Malin Head as defined by existing Project Control.

All Co-ordinates are in Irish Transverse Mercator Grid (ITM) as defined by OSi active GPS station Tallaght College (TLLG).



Project Title: CORK AREA COMMUTER RAIL PROGRAMME (Main Works)

Figure Number: FIGURE 025

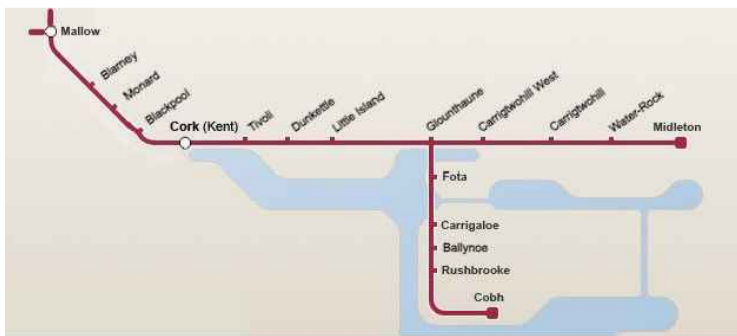


© Irish Rail (2022). This drawing is confidential and the copyright in it is owned by Irish Rail. This drawing must not be either loaned, copied or otherwise reproduced in whole or in part or used for any purpose without the prior permission of Irish Rail.

© Ordnance Survey Ireland and government of Ireland. All O.S. Data used for plans are printed under: "Copyright Ordnance Survey Ireland" Survey No. 0039722. (OSI Aerial Data or OSI Lidar Data) & Survey No. 2022/OSI\_NMA\_180 (OSI Vector Data).

All elevations are in metres and relate to OSI Geoid Model (OSGM02) Malin Head as defined by existing Project Control.

All Co-ordinates are in Irish Transverse Mercator Grid (ITM) as defined by OSI active GPS station Tallaght College (TLLG).



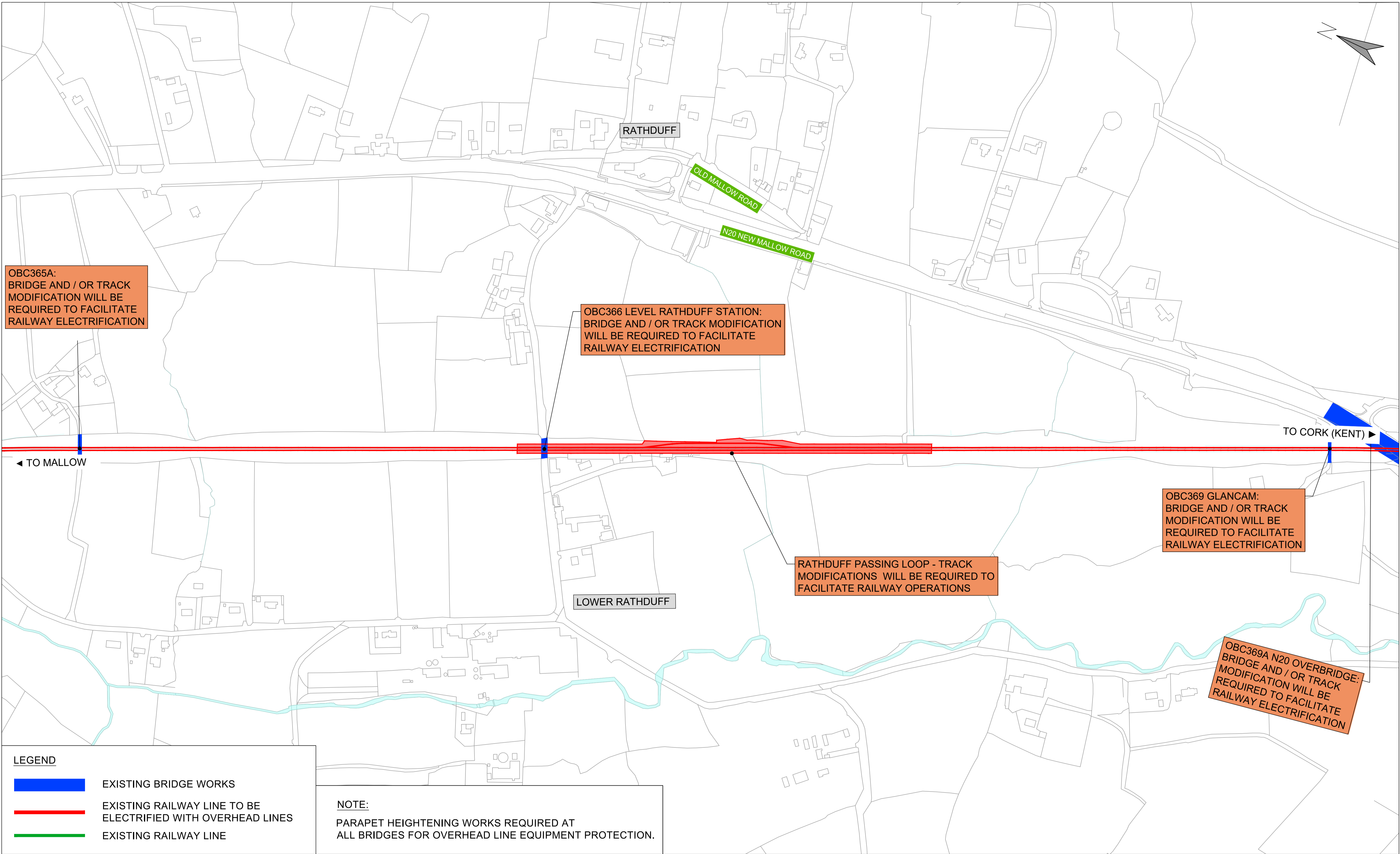
Rialtas na hÉireann  
Government of Ireland

Tionscadal Éireann  
Project Ireland  
2040



Project Title:  
CORK AREA COMMUTER RAIL PROGRAMME  
(Main Works)

Figure Number:  
FIGURE 026



© Irish Rail (2022). This drawing is confidential and the copyright in it is owned by Irish Rail. This drawing must not be either loaned, copied or otherwise reproduced in whole or in part or used for any purpose without the prior permission of Irish Rail.

© Ordnance Survey Ireland and government of Ireland. All O.S. Data used for plans are printed under: "Copyright Ordnance Survey Ireland" Survey No. 0039722. (OSI Aerial Data or OSI Lidar Data) & Survey No. 2022/OSI\_NMA\_180 (OSI Vector Data).

All elevations are in metres and relate to OSI Geoid Model (OSGM02) Malin Head as defined by existing Project Control.

All Co-ordinates are in Irish Transverse Mercator Grid (ITM) as defined by OSI active GPS station Tallaght College (TLLG).



Rialtas  
na hÉireann  
Government  
of Ireland

Tionscadal Éireann  
Project Ireland  
2040



NTA  
Gabharc Náisiúnta Iomparáil  
National Transport Authority



Project Title:  
CORK AREA COMMUTER RAIL PROGRAMME  
(Main Works)

Figure Number:  
FIGURE 027