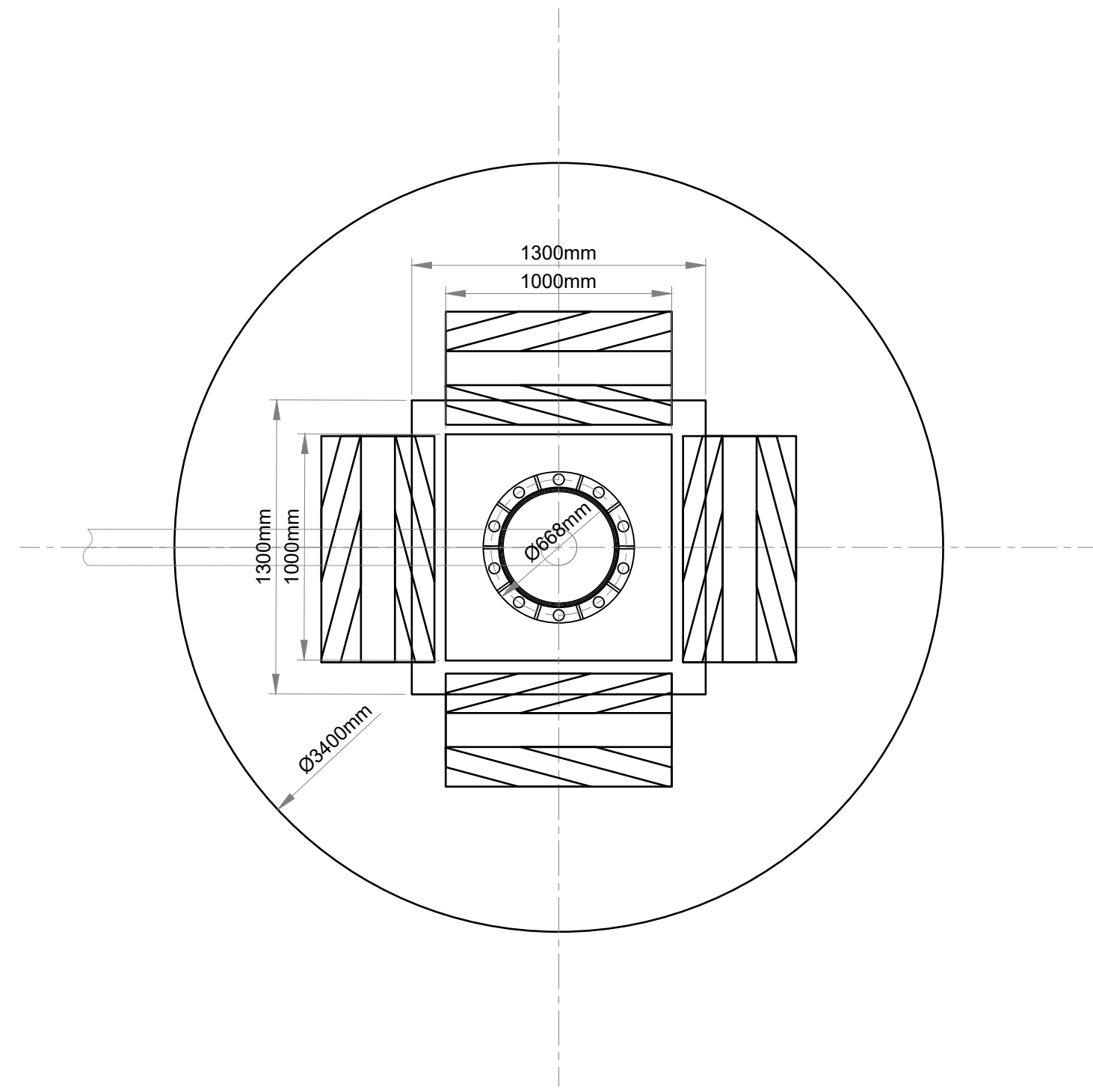
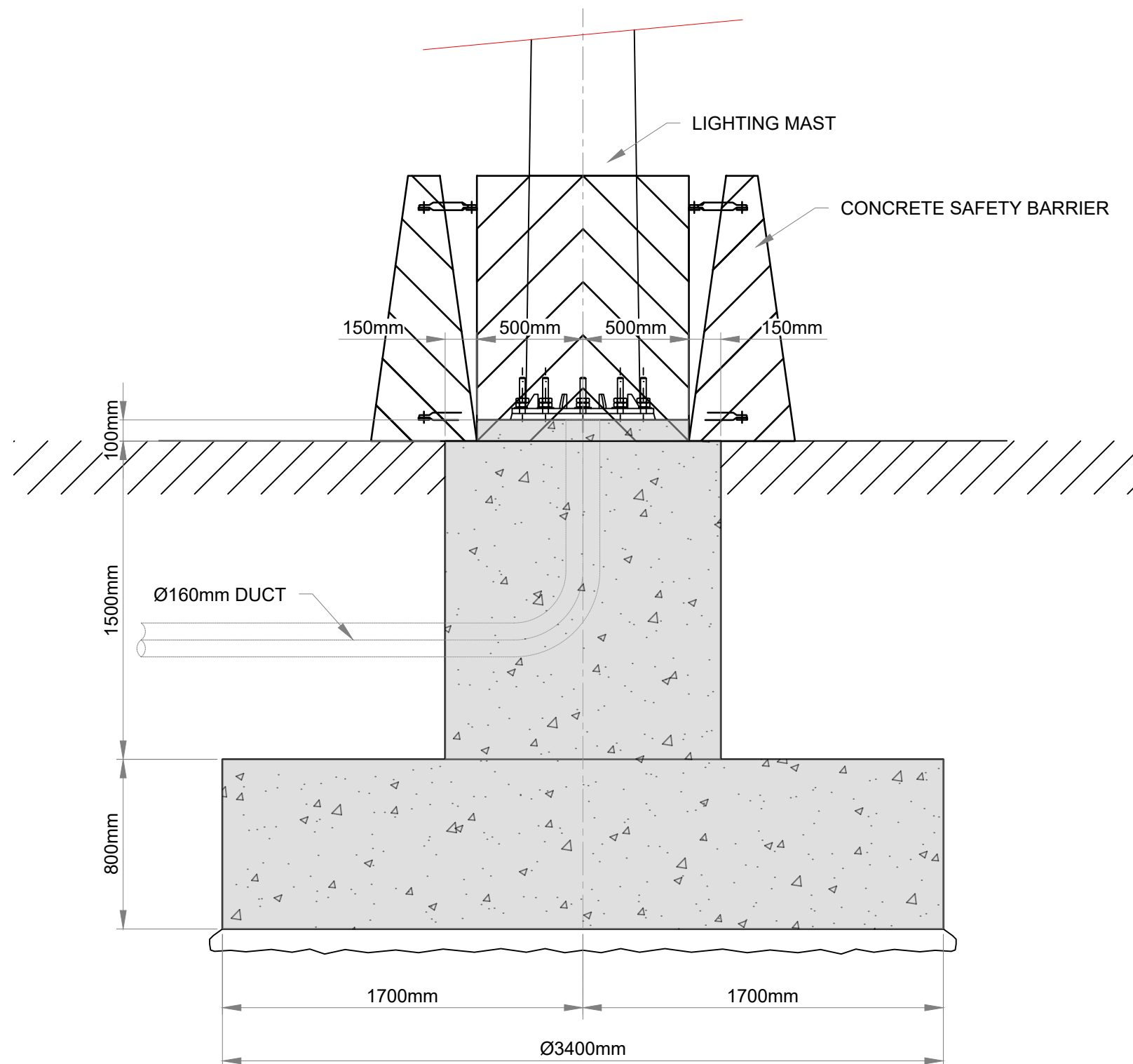


TYPICAL LAMP POST SECTION  
SCALE 1:50



FOUNDATION PLAN  
SCALE 1:25



FOUNDATION ELEVATION  
SCALE 1:25



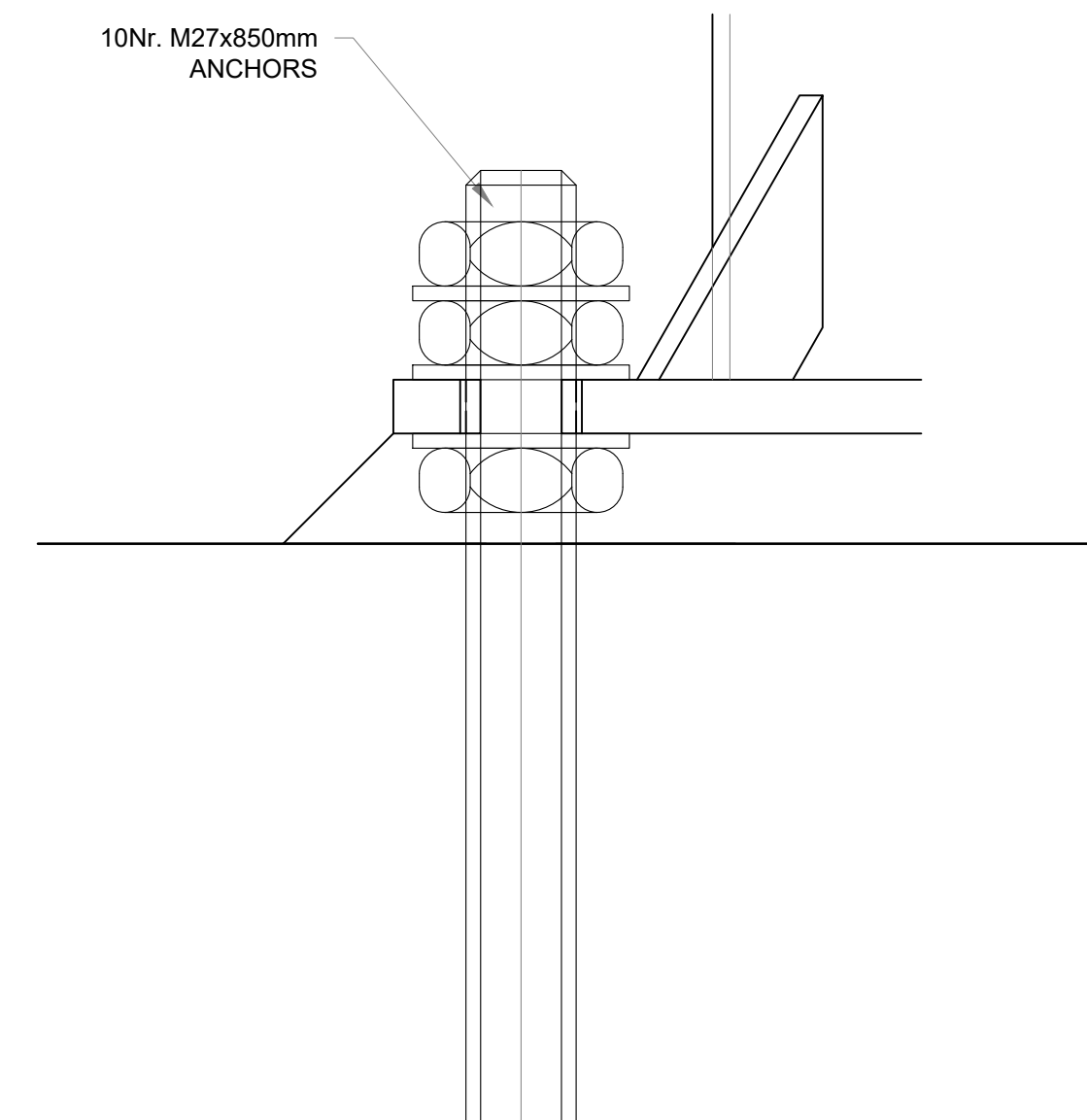
LIGHT COLUMN 15m



LIGHT COLUMN 12m



LIGHT COLUMN 8m



FIXING DETAIL  
SCALE 1:2

NOTES:

1. ALL DIMENSIONS ARE IN METERS UNLESS OTHERWISE STATED
2. USE DIMENSIONS ON DRAWINGS (DO NOT SCALE FROM DRAWINGS)
3. TYPICAL BASE FIXING DETAILS FOR THE TALLEST 30m FIXED MAST ARE SHOWN ON THIS DRAWING. ALTERNATIVES SUCH AS BASE-HINGED MASTS MAY ALSO BE USED DEPENDENT UPON DETAILED DESIGN. TYPICAL BASE FIXING DETAILS OF SMALLER LIGHTING MASTS OF 15m, 12m AND 8m HIGH ARE IN ACCORDANCE WITH SIMILAR DETAILING AND AS PER MANUFACTURERS RECOMMENDATIONS.

**GDG**  
GAVIN & DOHERTY  
GEOSOLUTIONS

Unit A2,  
Nuttgrove Office Park,  
Rathfarnham,  
Dublin 14, D14 X627  
Ireland.  
T +353 (0)1-2071000  
E info@gdgeo.com  
www.gdgeo.com

ISSUED AS: FOR PLANNING

CLIENT:



PARTNER:



PROJECT TITLE: ROSSLARE EUROPORT  
ORE HUB

DRAWING No: ROREH-PL-DR- GDG-C- 0503

Status: -P3 Revision: -03

DRAWING TITLE:

LIGHTING DETAILS  
LIGHT MAST 30 METERS  
DETAILS

SCALE: SHOWN	SHEET SIZE: A1	DATE: 20/11/2025
DRAWN BY: PF	CHECKED BY: M.F.	APPROVED BY: D.O'L