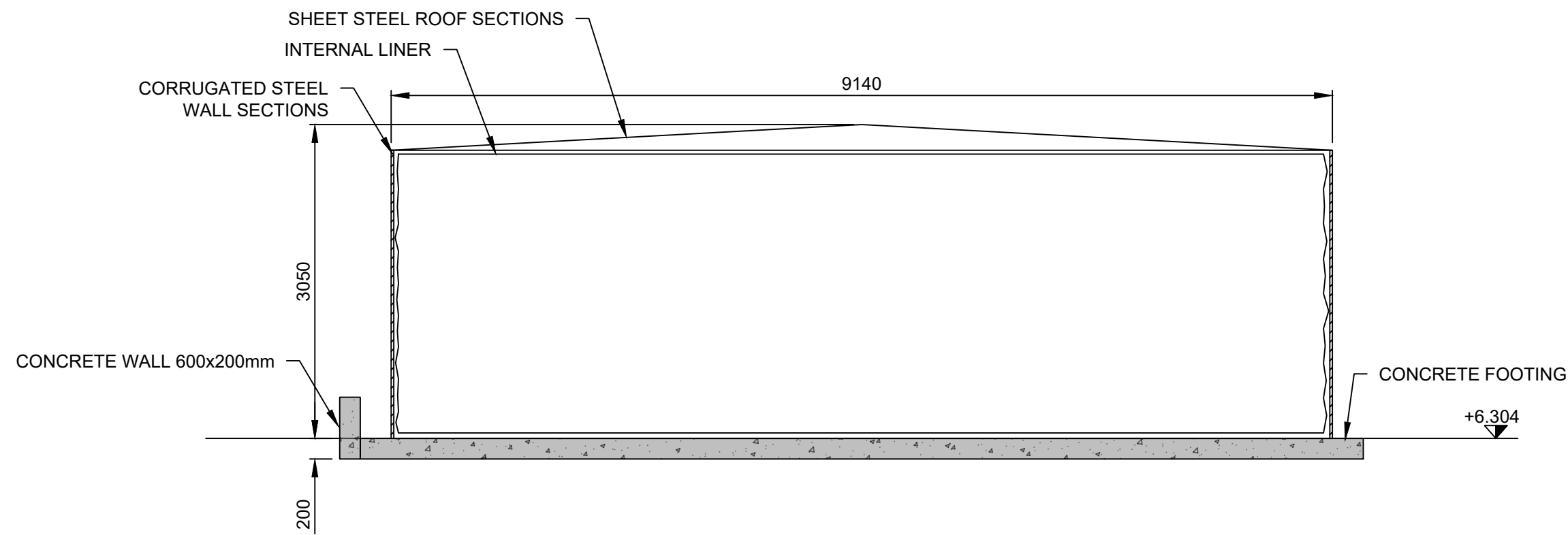
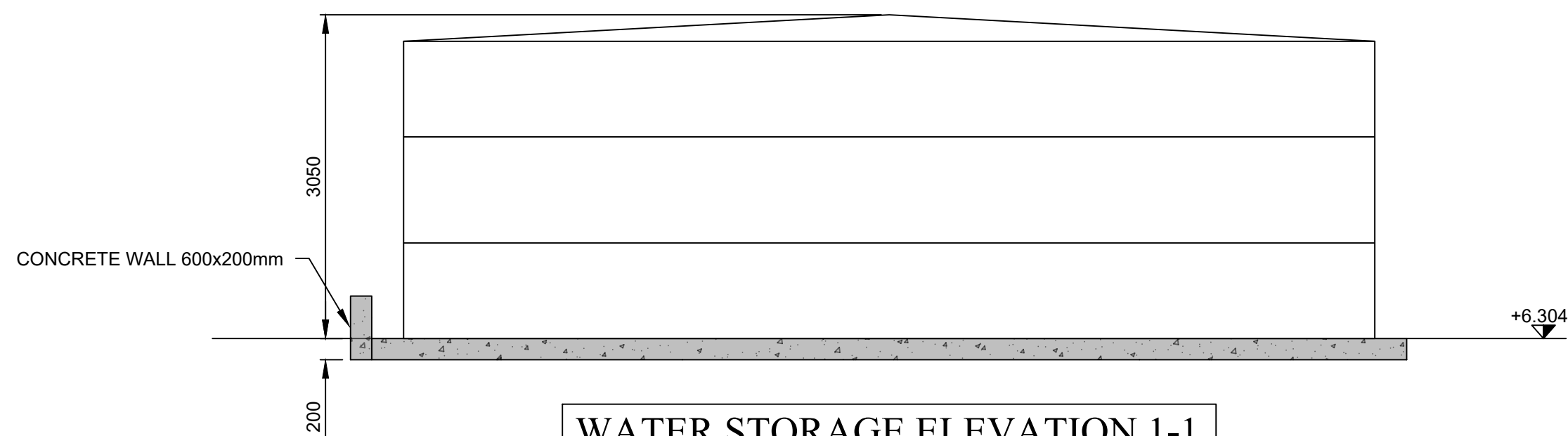


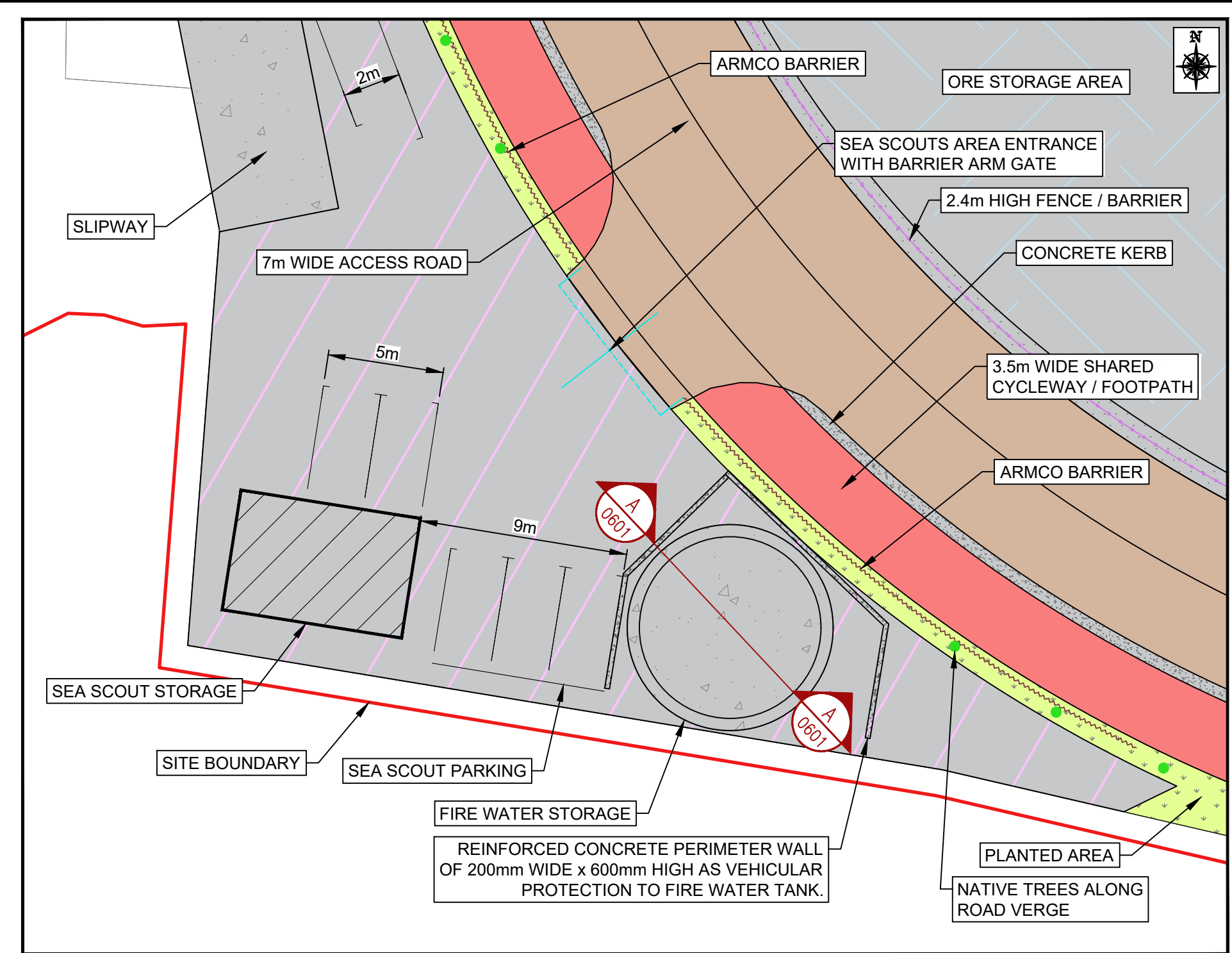
WATER STORAGE TYPICAL PLAN
SCALE: 1:50



WATER STORAGE SECTION A-A
SCALE: 1:50



WATER STORAGE ELEVATION 1-1
SCALE: 1:50



OVERALL PLAN
SCALE: 1:200



TYPICAL TANK VIEW
SCALE: NTS



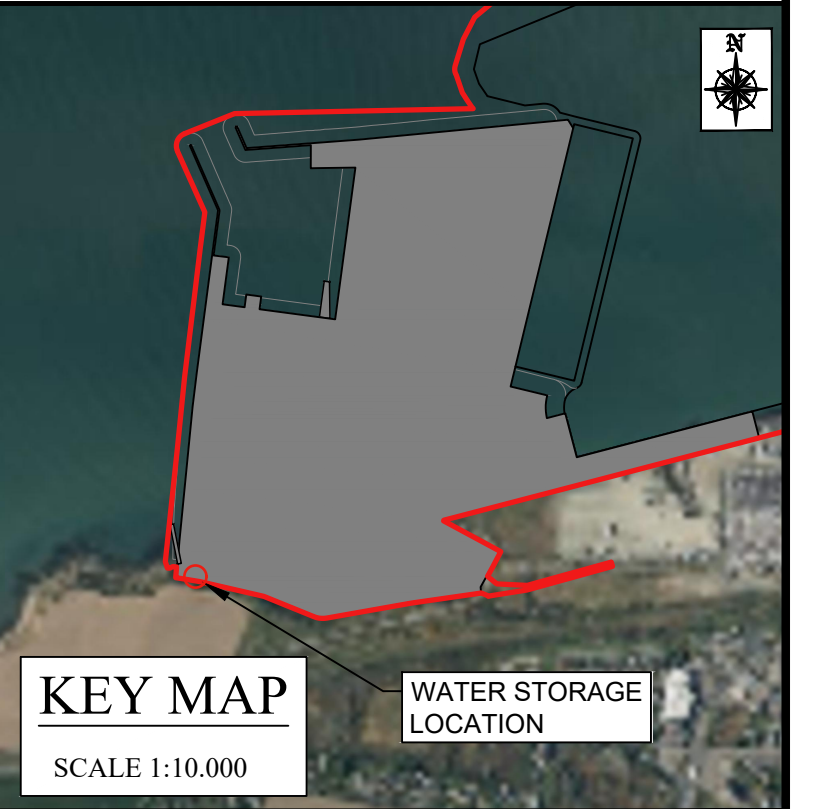
TYPICAL ARMCO BARRIER
SCALE: NTS

NOTES:

- ALL DIMENSIONS ARE IN MILLIMETERS UNLESS OTHERWISE STATED (DRAWINGS).
- USE DIMENSIONS ON DRAWINGS (DO NOT SCALE FROM DRAWINGS).
- ALL LEVELS ARE QUOTED RELATIVE TO ORDNANCE DATUM (REFERENCE DATUM) WHERE OD LEVELS ARE USED ON SECTIONS AND ELEVATIONS. THE RESPECTIVE CHART DATUM LEVEL IS NOTED BESIDE THE OD LEVEL IN BRACKETS.
- ORDNANCE DATUM MALIN mOD

CHART DATUM (mCD)

1.69 m
- GALVANISED STEEL FIRE WATER STORAGE TANK WITH CONICAL ROOF. CAPACITY GREATER THAN 180m³ STORAGE AS REQUIRED BY WEXFORD FIRE OFFICER AND INCLUDING 1.0mm EPDM INTERNAL LINER. TANK PERMANENTLY CONNECTED TO DN100 FIRE WATER MAINS WITH VORTEX INHIBITOR AND 4" HYDRANTS. CAST IRON GATE VALVE AND INTERNAL LEVEL INDICATOR. FOUNDATION SLAB OF 200mm DEEP REINFORCED CONCRETE.



GDG
GAVIN & DOHERTY
GEOSOLUTIONS

Unit A2,
Nutgrove Office Park,
Rathfarnham,
Dublin 14, D14 X627
Ireland.
T +353 (0)1-2071000
E info@gdgeo.com
www.gdgeo.com

ISSUED AS: FOR PLANNING

CLIENT: **Iarnród Éireann**
Irish Rail

PARTNER: **NICHOLAS O'DWYER**
an RSK company

PROJECT TITLE: **ROSSLARE EUROPORT ORE HUB**

DRAWING No: **ROREH-PL-DR- GDG-C- 0601**

Status: **-P3** Revision: **-04**

DRAWING TITLE: **FIRE WATER STORAGE GENERAL ARRANGEMENT PLAN, ELEVATION AND SECTION**

SCALE: **SHOWN** SHEET SIZE: **A1** DATE: **20/11/2025**
DRAWN BY: **EFC** CHECKED BY: **M.F.** APPROVED BY: **D.O'L**



"FUNDED BY THE EUROPEAN UNION. VIEWS AND OPINIONS EXPRESSED ARE HOWEVER THOSE OF THE AUTHOR(S) ONLY AND DO NOT NECESSARILY REFLECT THOSE OF THE EUROPEAN UNION. NEITHER THE EUROPEAN UNION NOR ANY GRANTING AUTHORITY CAN BE HELD RESPONSIBLE FOR THEM."