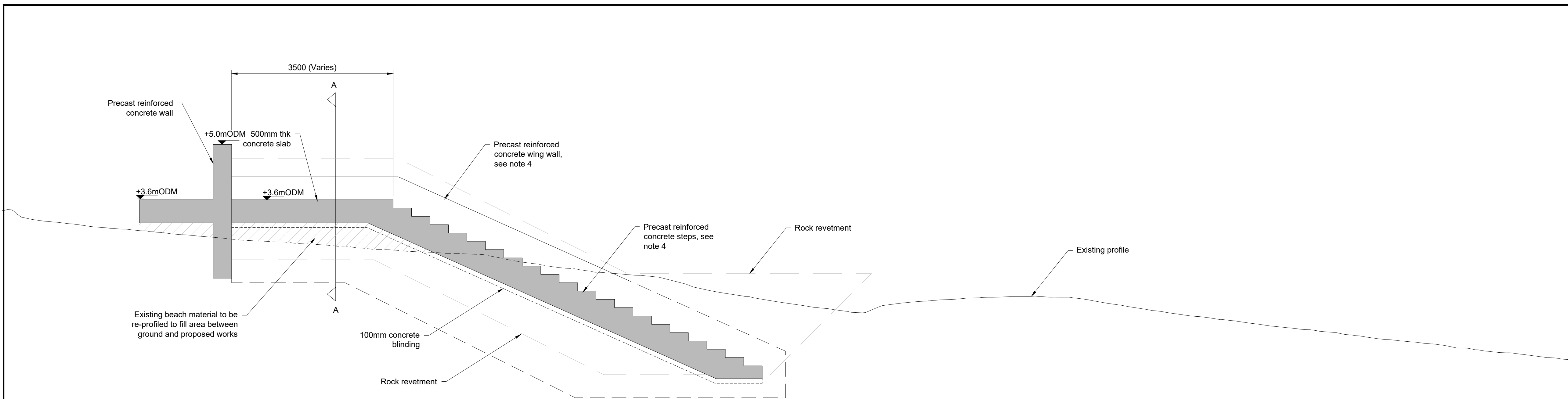
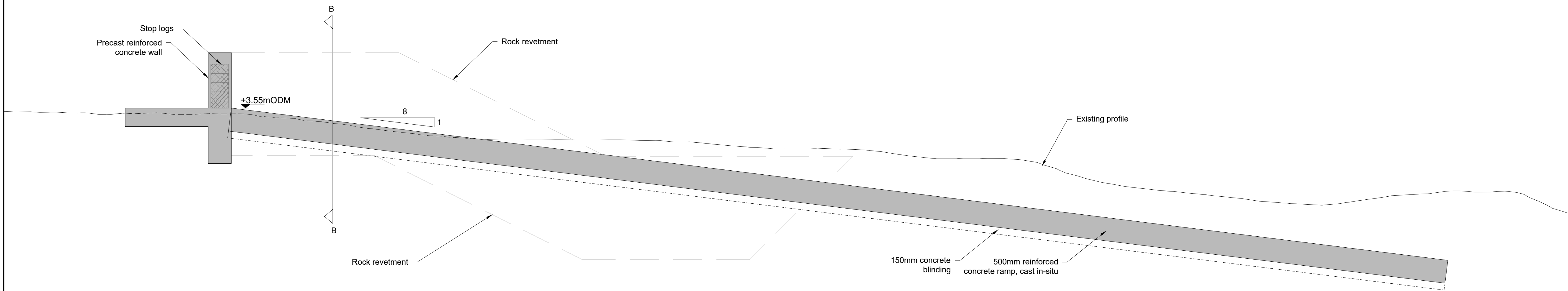


C:\pwworking\jacobs-emea-01\60189042\7694-CCA6_1-P3-DWG-CV-JAC-0400.dwg - 22/07/2025 10:58:25 - A1Frame - WilkinR



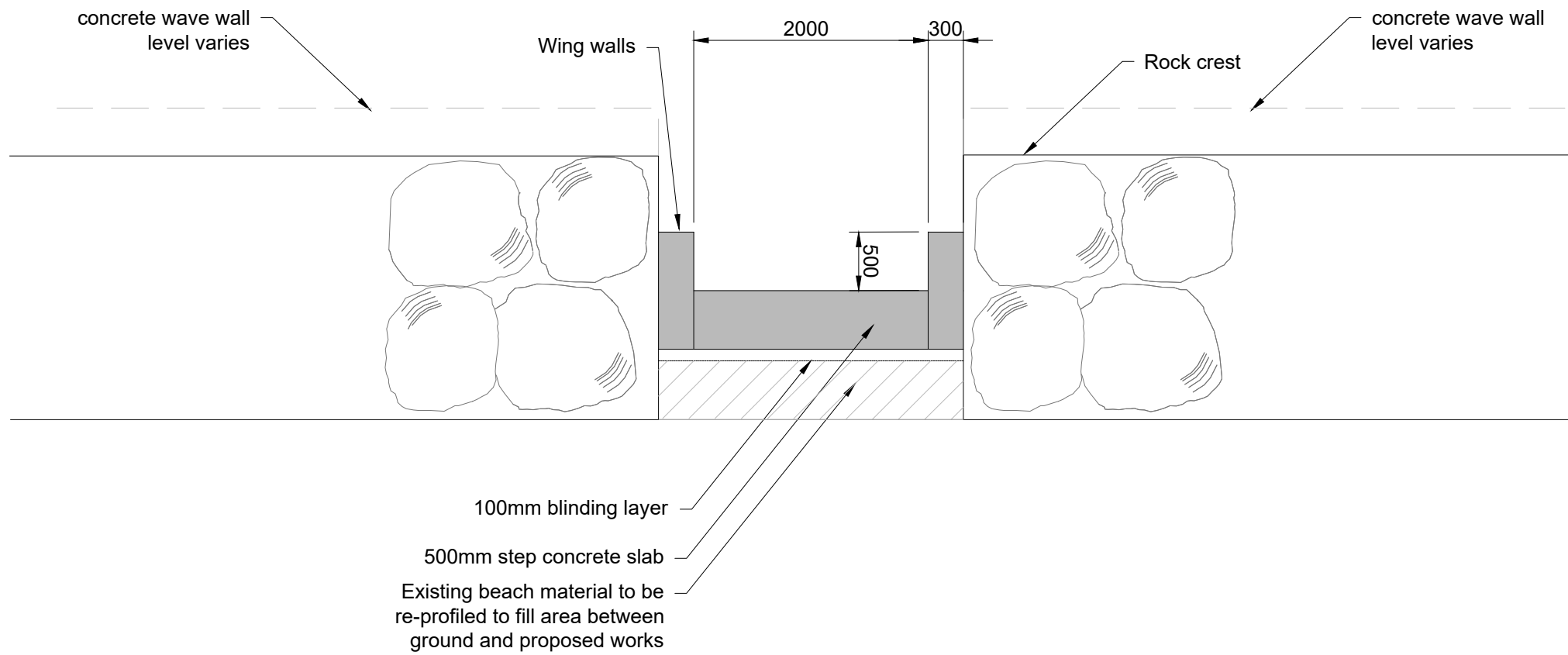
TYPICAL PEDESTRIAN STEPPED ACCESS

Scale 1:50



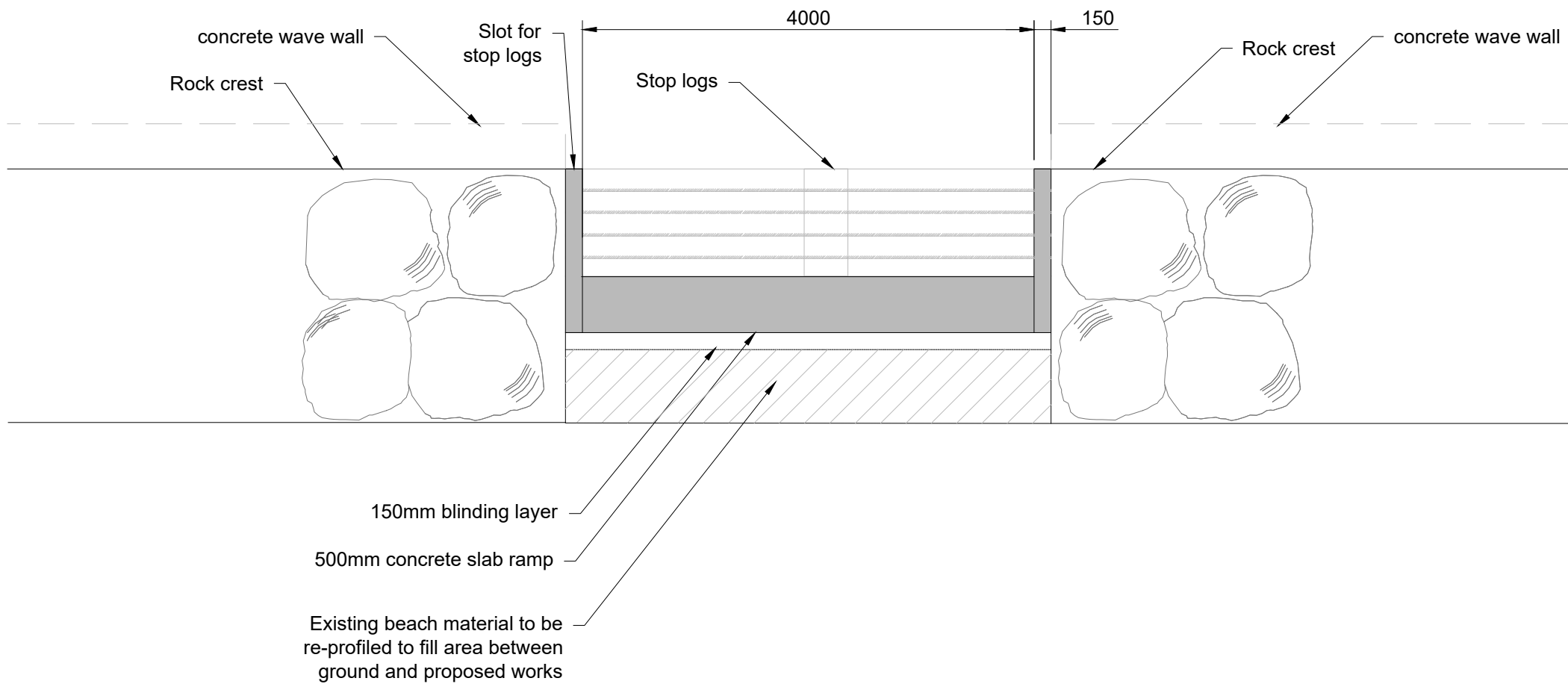
TYPICAL MAINTENANCE ACCESS RAMP

Scale 1:50



SECTION A-A THROUGH ROCK CREST

Scale 1:50



SECTION B-B THROUGH ROCK CREST

Scale 1:50




NOTES

1. Do not scale from this drawing.
2. Size and location of all structures is indicative only and to be determined through design development.
3. For locations of pedestrian access steps and maintenance ramp, refer to General Arrangement Plans 7694-CCA6_1-P3-DWG-CV-JAC-0200 to 7694-CCA6_1-P3-DWG-CV-JAC-0203
4. Detail of precast steps including number of step units, joints and lifting points to be determined through design development.

LEGEND

 New Reinforced Concrete


Rev	Rev. Date	Purpose of revision	Drawn	Checked	Rev'd	Apprv'd
B	21/07/2025	FINAL FOLLOWING CLIENT COMMENTS	EJ	JS	JD	DK
A	06/06/25	For Client Review and Comment	RM	OR	JD	DK



Designer:

Jacobs
Termini Building, 2nd Floor, 3 Arkle Road, Sandyford,
Dublin D18 CC05, Ireland. D04F02C5.
Tel: +353 (0)1 269 5666
www.jacobs.com

Project



Drawing title

KILCOOLE TO NEWCASTLE CCA6.1
PHASE 3 DESIGN
TYPICAL ACCESS DETAILS

Drawing status

Issue for Acceptance

State Code	Contract / Work Package 6.1		
Project Stage	Preliminary Design		
Scale	1:50	DO NOT SCALE	
Jacobs No.	D3658300	Rev	B
Client no.	7694		
Drawing number	Project No	Work Package	Phase
	7694-	CCA6_1	-P3
Type	Discipline	Originator	Number
DWG	- CV	- JAC	- 0400

© Copyright 2025 Jacobs U.K. Limited. The concepts and information contained in this document are the property of Jacobs. Use or copying of this document in whole or in part without the written permission of Jacobs constitutes an infringement of copyright. Limitation: This drawing has been prepared on behalf of, and for the exclusive use of, Jacobs' Client, and is subject to, and issued in accordance with, the provisions of the contract between Jacobs and the Client. Jacobs accepts no liability or responsibility whatsoever for, or in respect of, any use of, or reliance upon, this drawing by any third party.