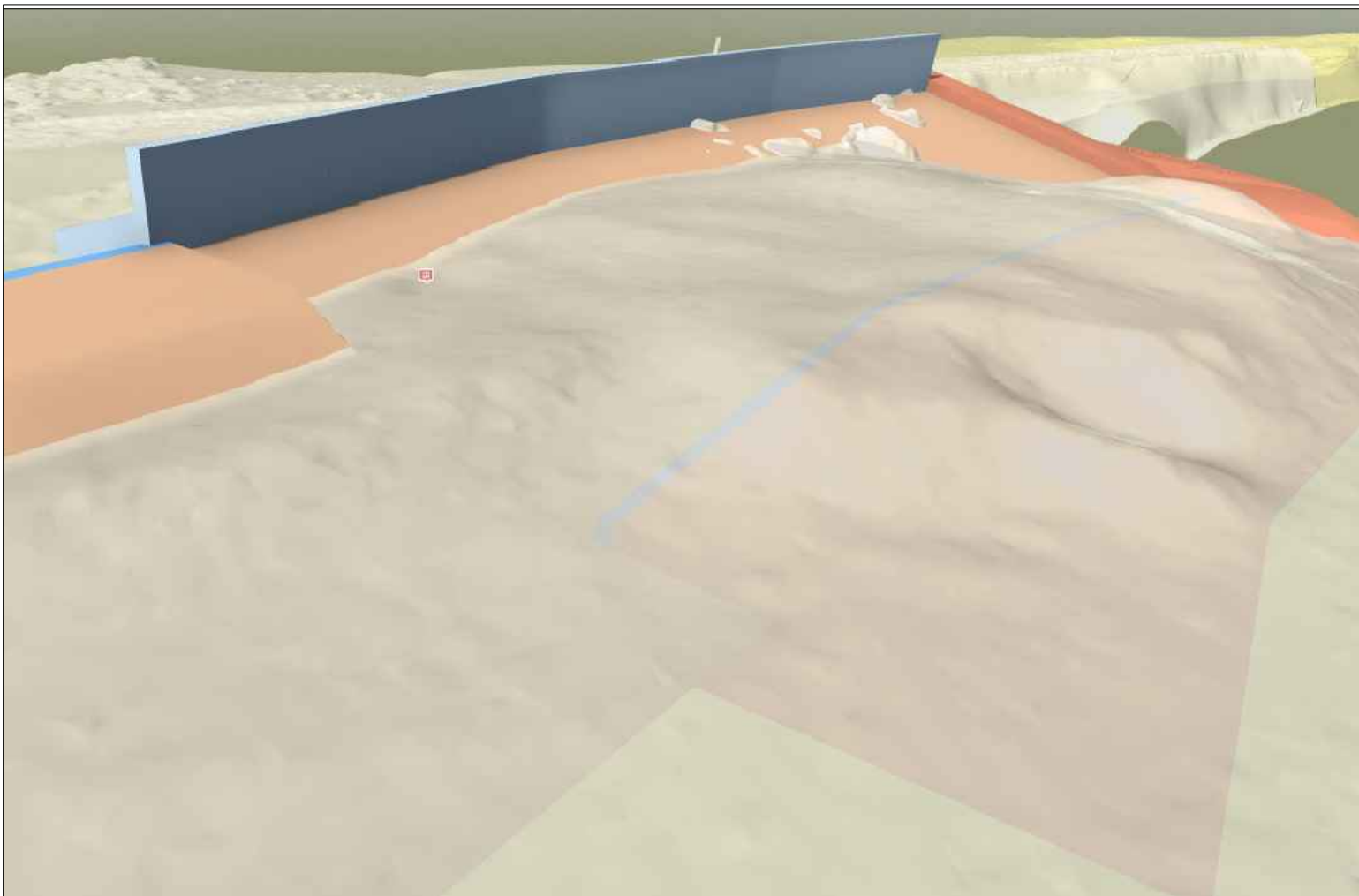
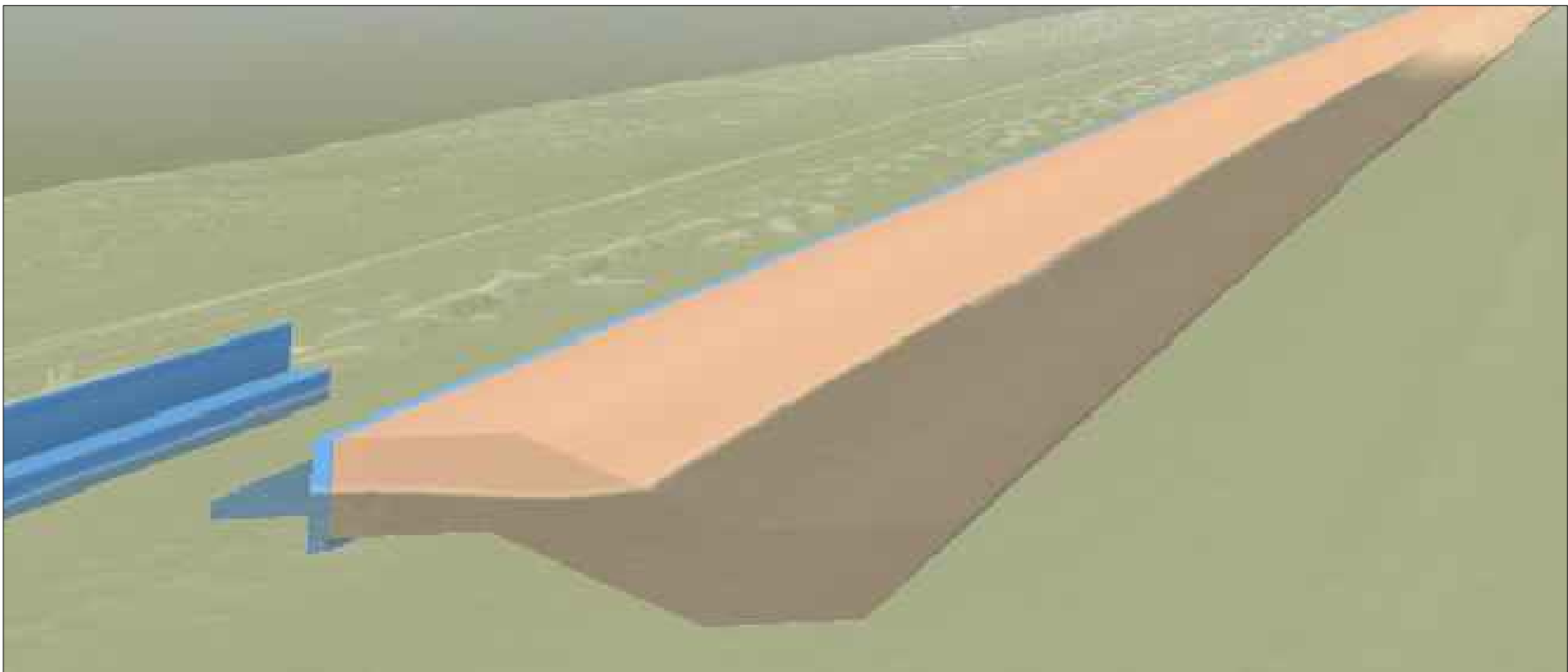


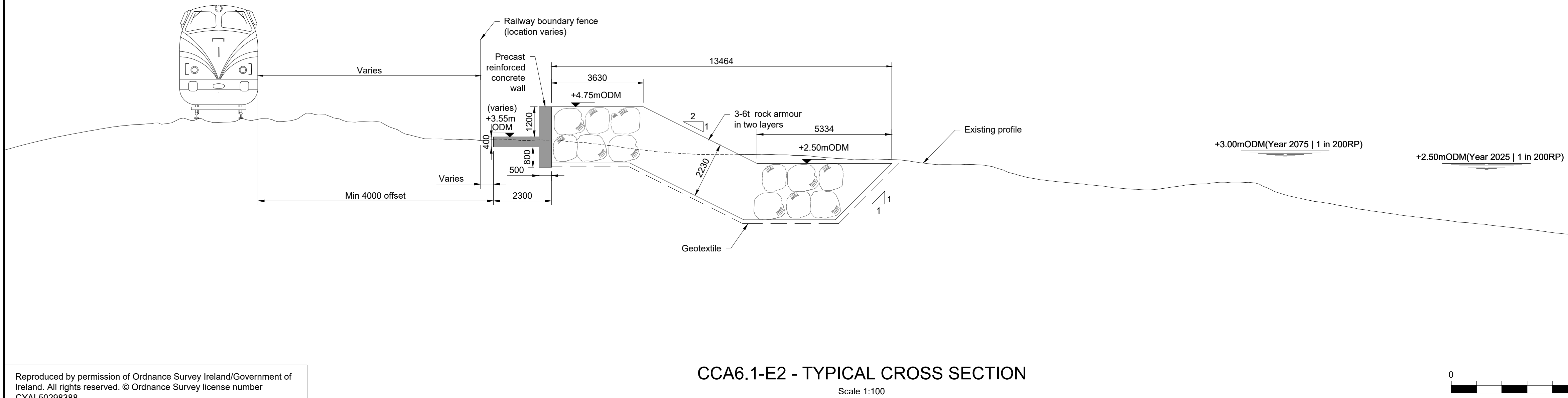
CCA6.1-E1 - TYPICAL CROSS SECTION
Scale 1:100



CCA6.1-E1 - TYPICAL 3D VISUAL OF ROCK REVETMENT
NTS



CCA6.1-E2 - TYPICAL 3D VISUAL OF ROCK REVETMENT
NTS



CCA6.1-E2 - TYPICAL CROSS SECTION
Scale 1:100

- NOTES
- All levels are in mODM
 - Do not scale from this drawing.
 - Additional tide conversions are available for high and low water (spring and neap tides) at Secondary Ports of Dublin Bar, Dun Laoghaire, Greystones (high only) and Wicklow. High tides at CCA6 are typically 1.2m lower than at Dublin.
 - All levels and dimensions are approximate and to be confirmed during design development.
 - For cross section locations refer to drawing 7694-CCA6_1-P3-DWG-CV-JAC-0100.
 - Existing ground profile is extracted from ECRIPP UAV survey data and varies along each typical cross-section.
 - Water levels shown on the section represent the modelled extreme water level in a 0.5% AEP (Annual Exceedance Probability) event, also known as the 1 in 200 year return period storm. One water level represents current sea levels and the second represents sea levels inclusive of a sea level rise allowance to 2075.

LEGEND

	New Reinforced Concrete
	Geotextile

mODM	mODM
+0.19	+1.99
-0.21	+1.59
	+0.89
	-0.11
-1.41	-1.01
-1.81	-1.81
	-2.61
	LAT

TIDE BAR
WICKLOW HARBOUR
(STANDARD PORT)

TIDE BAR
DUBLIN NORTH WALL
(STANDARD PORT)

B	21/07/2025	FINAL FOLLOWING CLIENT COMMENTS	EJ	JS	JD	DK
A	06/06/2025	For Client Review and Comment	RM	OR	JD	DK
Rev	Rev. Date	Purpose of revision	Drawn	Checked	Rev'd	Apprv'd

Client

Designer:

Project

Drawing title
**KILCOOLE TO NEWCASTLE CCA6.1
PHASE 3 DESIGN
GENERAL ARRANGEMENT
CROSS SECTIONS 2 OF 4**

Drawing status	Issue for Acceptance		
State Code	Contract / Work Package 6.1		
Project Stage	Preliminary Design		
Scale	1:100	DO NOT SCALE	
Jacobs No.	D3658300	Rev	B
Client no.	7694		
Drawing number	Project No	Work Package	Phase
	7694-	CCA6_1	-P3
	Type	Discipline	Originator
	DWG	- CV	- JAC
			Number
			- 0301

© Copyright 2025 Jacobs U.K. Limited. The concepts and information contained in this document are the property of Jacobs. Use or copying of this document in whole or in part without the written permission of Jacobs constitutes an infringement of copyright. Limitation: This drawing has been prepared on behalf of, and for the exclusive use of, Jacobs' Client, and is subject to, and issued in accordance with, the provisions of the contract between Jacobs and the Client. Jacobs accepts no liability or responsibility whatsoever for, or in respect of, any use of, or reliance upon, this drawing by any third party.