

PORT NAVIGATION LIGHTS
BATTERY POWERED

RUBBLE MOUND
BREAKWATER WITH
ROCK
ARMOUR

FISHING BOAT BERTH

WALKWAY
16.8x1.5m

FISHING QUAY

NEW SMALL
BOAT HARBOUR

2 x 3.5m LANE
ACCESS ROAD

RETAINING WALL
WITH CAPPING
BEAM

RUBBER ARC FENDERS
@15m C/C

RUBBLE MOUND
BREAKWATER WITH
ROCK ARMOUR

RUBBLE MOUND
BREAKWATER WITH
ROCK ARMOUR

TUG BERTHS

RNLI BERTH

WALKWAY 23.2x1.5m

22.2

62.65

RUBBER ARC FENDERS
@15m C/C

SMALL BOATS
BERTHS

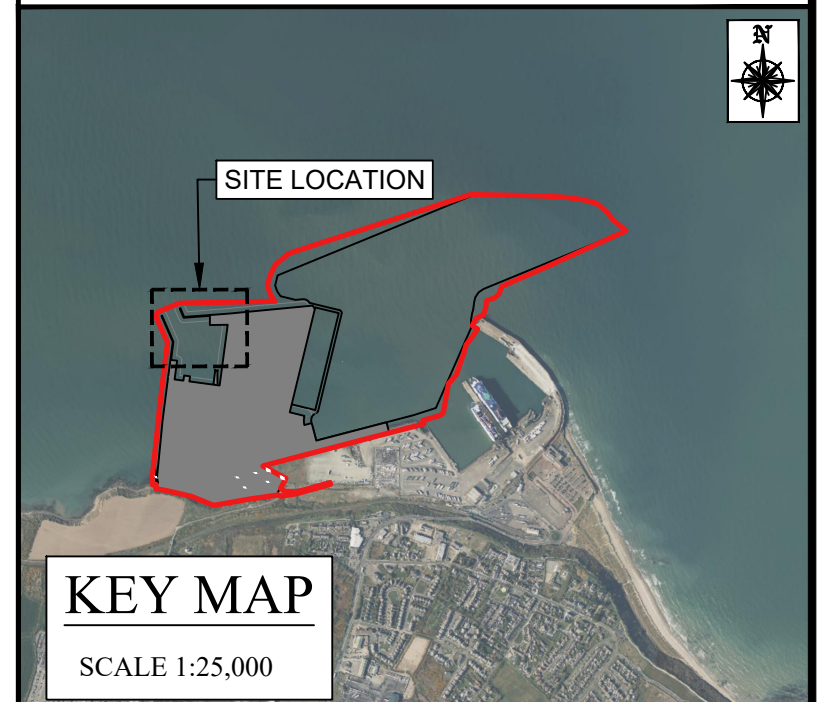


Co-funded by
the European Union

"FUNDED BY THE EUROPEAN UNION. VIEWS AND OPINIONS EXPRESSED ARE
HOWEVER THOSE OF THE AUTHOR(S) ONLY AND DO NOT NECESSARILY
REFLECT THOSE OF THE EUROPEAN UNION. NEITHER THE EUROPEAN UNION
NOR ANY GRANTING AUTHORITY CAN BE HELD RESPONSIBLE FOR THEM."

NOTES:

1. ALL DIMENSIONS ARE IN METERS UNLESS OTHERWISE STATED
2. USE DIMENSIONS ON DRAWINGS (DO NOT SCALE FROM DRAWINGS)
3. ORDNANCE SURVEY IRELAND LICENCE No. 50428728 10/24. SHEET No. 5644-D, 5645-C, 5714-B, 5715-A, AND 5715-B.
4. HYDRAULIC SERVICES HAVE BEEN OMITTED FOR CLARITY.
5. CCTV CAMERAS TO BE INSTALLED ON LIGHT POLES WHEN AT SAME LOCATION
6. CHAMBERS FOR ELECTRICAL AND TELECOMMUNICATION CABLES SHALL BE POSITIONED AT EACH DIVERGENCE/CONNECTION AND CHANGE OF DIRECTION POINT AT ROSSLARE ORE HUB AREA.
7. ELECTRICAL AND TELECOMMUNICATION CHAMBERS SHALL BE POSITIONED WITH A MAXIMUM DISTANCE OF 150m FROM EACH OTHER ALONG ORE STORAGE AREA PERIMETER.
8. LIGHT MAST WITH LIGHTS POSITIONED AT 30m AND 15m HEIGHT POINTING TO ORE AREA AND QUAY 1, RESPECTIVELY, WITH CCTV CAMERA.



LEGEND:

- SITE BOUNDARY UNDER THIS APPLICATION.
TOTAL BOUNDARY AREA : 803394m² (80.339ha)
- PROPOSED ELECTRICAL DUCTS
- PROPOSED TC/CCTV DUCTS
- LIGHT MAST 30m
- LIGHT MAST 12m
- LIGHT MAST 8m
- CCTV POLE AND CABINET
- DUCT CHAMBERS
- CONNECTION BOX TO EXISTING SERVICES
- NAVIGATION LIGHTS
- ELECTRICAL INSPECTION CHAMBERS
- TELECOM INSPECTION CHAMBERS

GDG
GAVIN & DOHERTY
GEOSOLUTIONS

Unit A2,
Nuttgrove Office Park,
Rathfarnham,
Dublin 14, D14 X627
Ireland.
T +353 (0)1-2071000
E info@gdgeo.com
www.gdgeo.com

ISSUED AS: FOR PLANNING

CLIENT:



PARTNER:



PROJECT TITLE:

ROSSLARE EUROPORT
ORE HUB

DRAWING No:

ROREH-PL-DR- GDG-C-0301

DRAWING TITLE:

Status: -P3 Revision: -05

PROPOSED DUCTED SERVICES
SHEET 1
NEW SMALL BOAT HARBOUR

SCALE: 1:500 SHEET SIZE: A1 DATE: 21/11/2025
DRAWN BY: EFC CHECKED BY: M.F. APPROVED BY: D.O'L

No. 50428728 10/24
© ORDNANCE SURVEY IRELAND/GOVERNMENT OF IRELAND