

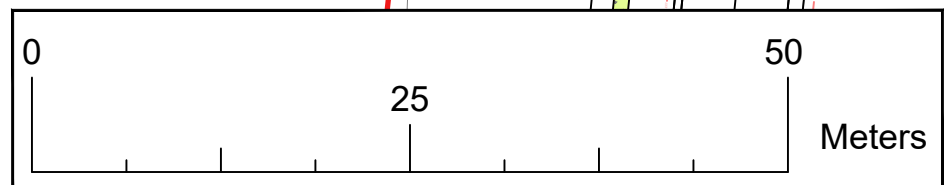
FOUL PUMP STATION
CONNECTION BOX

RUBBER ARC FENDERS
@15m C/C
RETAINING WALL
WITH CAPPING BEAM
CTV QUAY

SMALL BOATS
BERTHS

7/14m x 49m
SLIPWAY

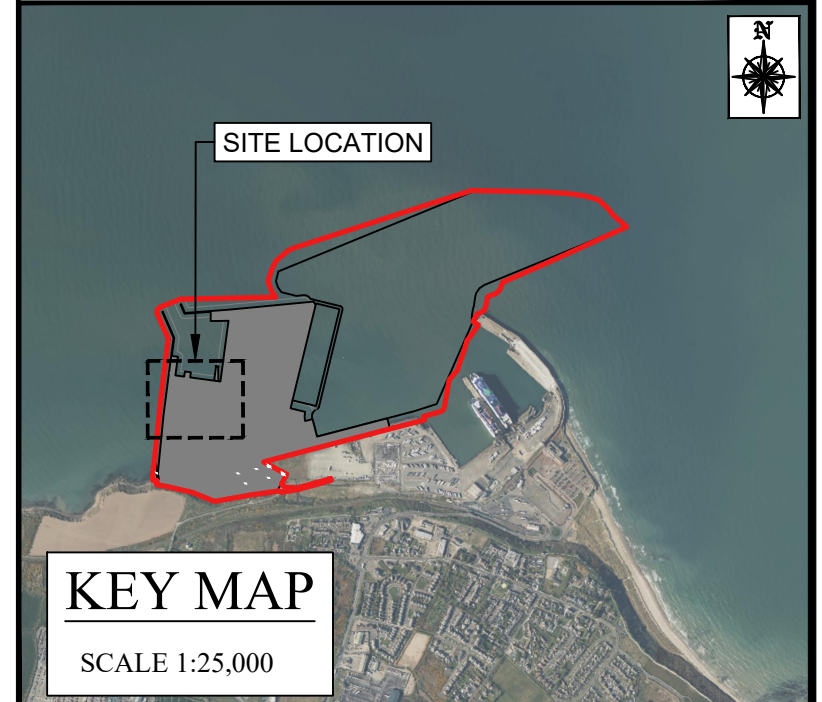
1m DEEP IMPORTED STONE
PAVEMENT WITH 2 INTERNAL LAYERS
OF GEOGRID AS REINFORCEMENT



No. 50428728 10/24
© ORDNANCE SURVEY IRELAND/GOVERNMENT OF IRELAND

NOTES:

1. ALL DIMENSIONS ARE IN METERS UNLESS OTHERWISE STATED
2. USE DIMENSIONS ON DRAWINGS (DO NOT SCALE FROM DRAWINGS)
3. ORDNANCE SURVEY IRELAND LICENCE No. 50428728 10/24. SHEET No. 5644-D, 5645-C, 5714-B, 5715-A, AND 5715-B.
4. HYDRAULIC SERVICES HAVE BEEN OMITTED FOR CLARITY.
5. CCTV CAMERAS TO BE INSTALLED ON LIGHT POLES WHEN AT SAME LOCATION
6. CHAMBERS FOR ELECTRICAL AND TELECOMMUNICATION CABLES SHALL BE POSITIONED AT EACH DIVERGENCE/CONNECTION AND CHANGE OF DIRECTION POINT AT ROSSLARE ORE HUB AREA.
7. ELECTRICAL AND TELECOMMUNICATION CHAMBERS SHALL BE POSITIONED WITH A MAXIMUM DISTANCE OF 150m FROM EACH OTHER ALONG ORE STORAGE AREA PERIMETER.
8. LIGHT MAST WITH LIGHTS POSITIONED AT 30m AND 15m HEIGHT POINTING TO ORE AREA AND QUAY 1, RESPECTIVELY, WITH CCTV CAMERA.



LEGEND:

- SITE BOUNDARY UNDER THIS APPLICATION. TOTAL BOUNDARY AREA : 803394m² (80.339ha)
- PROPOSED ELECTRICAL DUCTS
- PROPOSED TC/CCTV DUCTS
- LIGHT MAST 30m
- LIGHT MAST 8m
- CCTV POLE AND CABINET
- DUCT CHAMBERS
- ELECTRICAL INSPECTION CHAMBERS
- TELECOM INSPECTION CHAMBERS

GDG
GAVIN & DOHERTY
GEOSOLUTIONS

Unit A2,
Nuttgrove Office Park,
Rathfarnham,
Dublin 14, D14 X627
Ireland.
T +353 (0)1-2071000
E info@gdgeo.com
www.gdgeo.com

ISSUED AS: FOR PLANNING

CLIENT: **Iarnród Éireann**
Irish Rail

PARTNER: **NICHOLAS O'DWYER**

PROJECT TITLE: **ROSSLARE EUROPORT ORE HUB**

DRAWING No: **ROREH-PL-DR- GDG-C-0302**

Status: **-P3** Revision: **-04**

DRAWING TITLE: **PROPOSED DUCTED SERVICES SHEET 2 NEW SMALL BOAT HARBOUR AND ORE HUB**

SCALE: **1:500** SHEET SIZE: **A1** DATE: **21/11/2025**
DRAWN BY: **EFC** CHECKED BY: **M.F.** APPROVED BY: **D.O'L**



"FUNDED BY THE EUROPEAN UNION. VIEWS AND OPINIONS EXPRESSED ARE HOWEVER THOSE OF THE AUTHOR(S) ONLY AND DO NOT NECESSARILY REFLECT THOSE OF THE EUROPEAN UNION. NEITHER THE EUROPEAN UNION NOR ANY GRANTING AUTHORITY CAN BE HELD RESPONSIBLE FOR THEM."